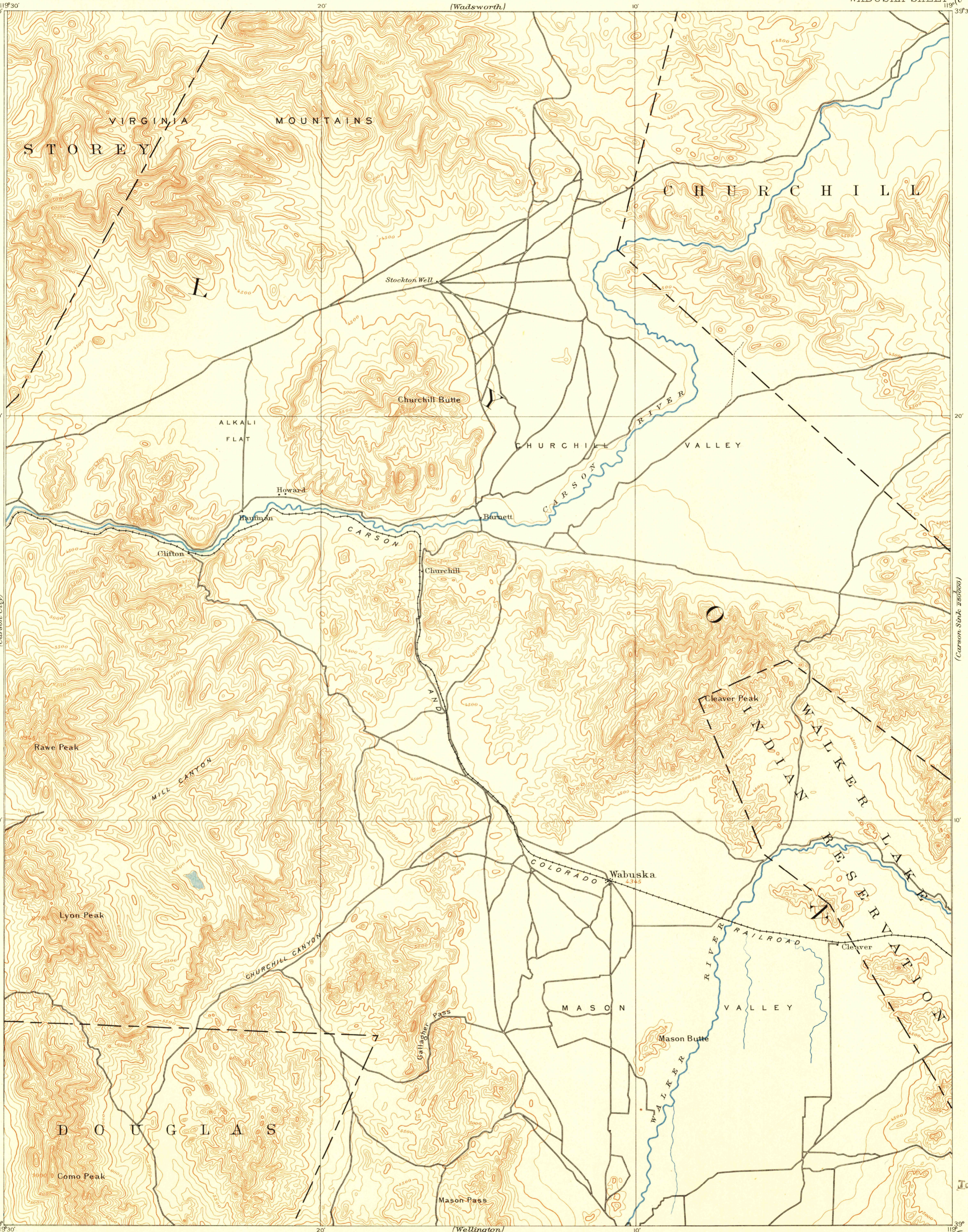


U.S.G.S.
FILE COPY
Inspection and Editing.

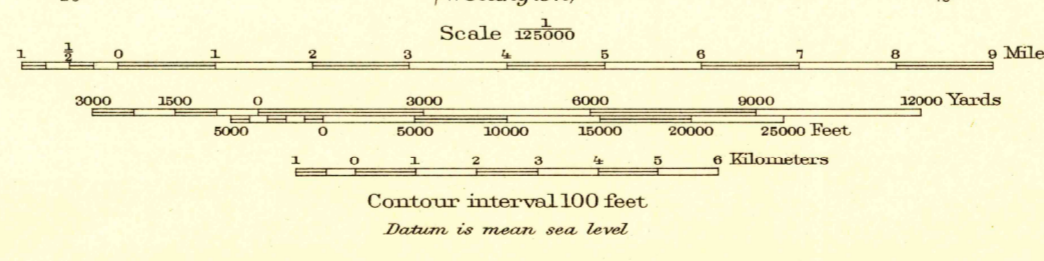
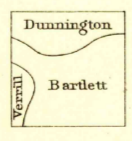
UNITED STATES
DEPARTMENT OF THE INTERIOR
GEOLOGICAL SURVEY

NEVADA
WABUSKA SHEET



Virginia Mountains
STOREY
Churchill Butte
CHURCHILL VALLEY
CARSON RIVER
Churchill
Wabuska
Indian Walker Reservation
Mason Valley
Mason Butte
DUGLASS
Mason Pass
Gallagher Pass
Walker River
Walker Lake
RESERVATION
Clever
Clever Peak
WALKER RIVER RAILROAD
MILL CANYON
CHURCHILL CANYON
ALKALI FLAT
Howard
Bartlett
Clifton
Rawe Peak
Lyon Peak
Como Peak

A.H. Thompson, Geographer in charge.
E.M. Douglas, Topographer in charge.
Triangulation by H.E.C. Feussier.
Topography by A.F. Dunnington, P.V.S. Bartlett and G.E. Verrill.
Surveyed in 1888, 90.



Edition of Sept. 1894, reprinted 1951
Polyconic projection.
Surveyed by reconnaissance methods

NEV.
WABUSKA
N3900-W11900/30

U.S.G.S.
FILE COPY
Inspection and Editing.

FOR SALE BY U.S. GEOLOGICAL SURVEY, FEDERAL CENTER, DENVER, COLORADO OR WASHINGTON 25, D.C.
A FOLDER DESCRIBING TOPOGRAPHIC MAPS AND SYMBOLS IS AVAILABLE ON REQUEST

MAY 25 1951

2135