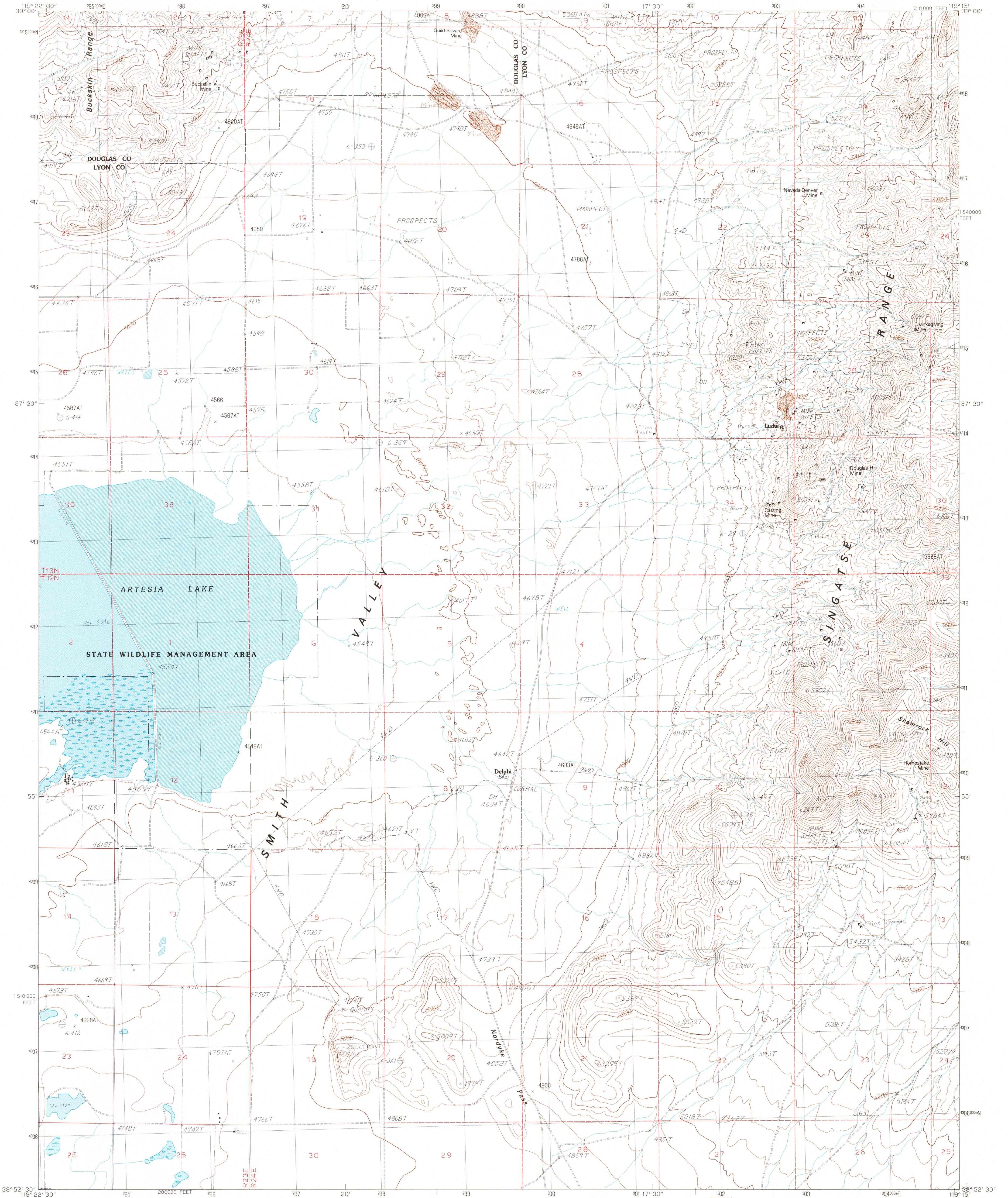


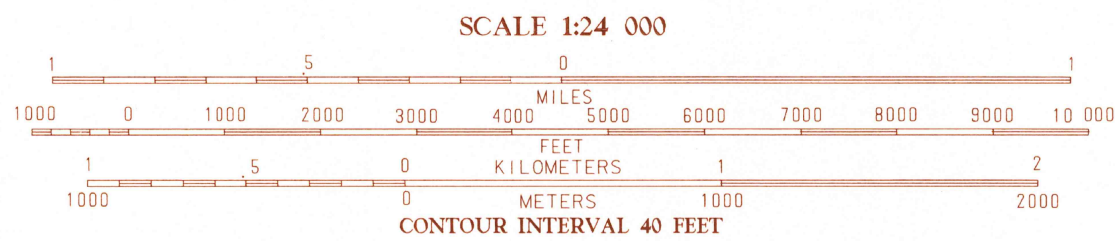
UNITED STATES
DEPARTMENT OF THE INTERIOR
GEOLOGICAL SURVEY

ARTESIA LAKE QUADRANGLE
NEVADA
7.5 MINUTE SERIES (TOPOGRAPHIC)



PRODUCED BY THE UNITED STATES GEOLOGICAL SURVEY
CONTROL BY U.S.G.S. NOS/NOAA
COMPILED FROM AERIAL PHOTOGRAPHS TAKEN 1982
FIELD CHECKED 1983 MAP EDITED 1986
PROJECTION TRANSVERSE MERCATOR
GRID: 1000-METER UNIVERSAL TRANSVERSE MERCATOR ZONE 12
1000-FOOT STATE GRID TICKS NEVADA, WEST ZONE
UTM GRID DECLINATION 12° WEST
1986 MAGNETIC NORTH DECLINATION 15° 30' EAST
VERTICAL DATUM NATIONAL GEODETIC VERTICAL DATUM OF 1929
HORIZONTAL DATUM 1927 NORTH AMERICAN DATUM
To place on the predicted North American Datum of 1983,
move the projection lines as shown by dashed corner ticks
(13 meters north and 86 meters east)
There may be private inholdings within the boundaries of any
Federal and State Reservations shown on this map
All marginal data and lettering generated and positioned by
automated type placement procedures

PROVISIONAL MAP
Produced from original
manuscript drawings. In-
formation shown as of date
of photography.



THIS MAP COMPLIES WITH NATIONAL MAP ACCURACY STANDARDS
FOR SALE BY U.S. GEOLOGICAL SURVEY, DENVER, COLORADO 80225
OR RESTON, VIRGINIA 22092

QUADRANGLE LOCATION							
1	2	3	4	5	6	7	8
1 Mount Cannon	2 Lincoln Flat	3 Mason Run	4 New Year Valley	5 Verigton	6 Green Peak	7 Smith	8 Wilson Canyon

ADJOINING 7.5' QUADRANGLE NAMES

ROAD LEGEND
Improved Road
Unimproved Road
Trail
Interstate Route U.S. Route State Route

ARTESIA LAKE, NEVADA
PROVISIONAL EDITION 1986

38119-H3-TF-024

