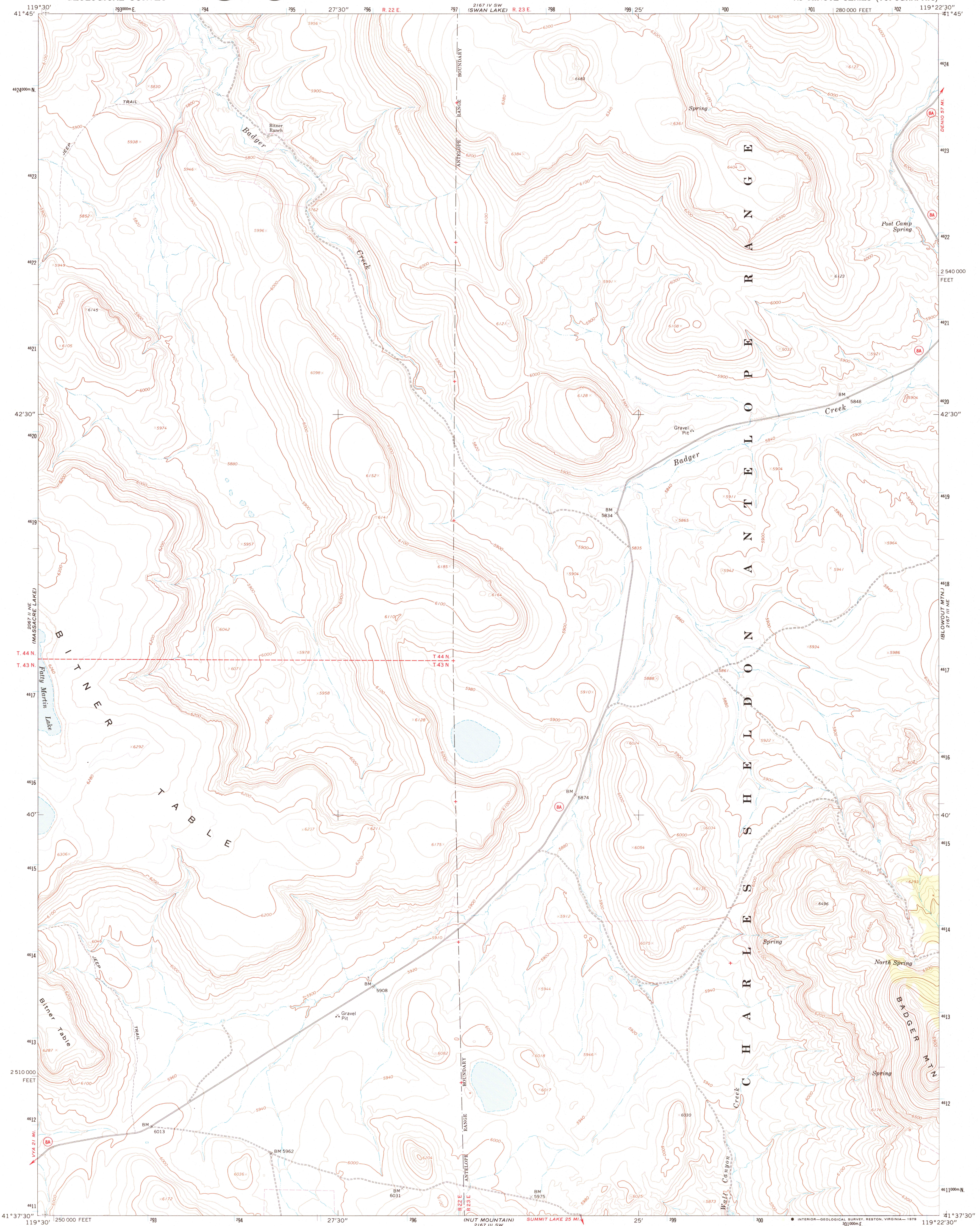
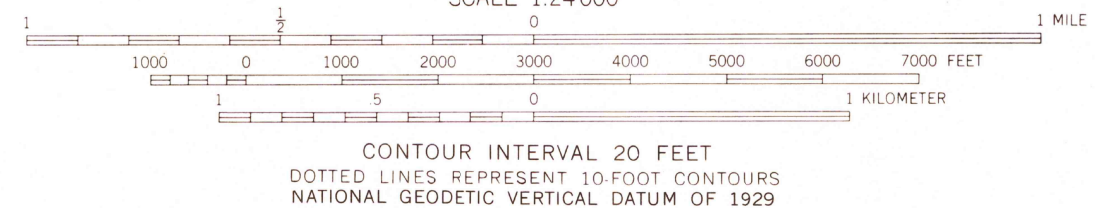
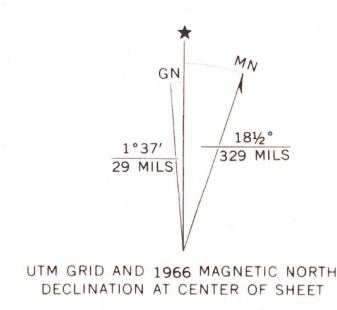


2167 IV SE
(CALIFORNIA) MT. 50



Maped, edited, and published by the Geological Survey
Control by USGS and USC&GS
Topography by photogrammetric methods from aerial
photographs taken 1965. Field checked 1966
Polyconic projection. 1927 North American datum
10,000-foot grid based on Nevada coordinate system, west zone
1000-meter Universal Transverse Mercator grid ticks,
zone 11, shown in blue
To place on the predicted North American Datum 1983
move the projection lines 16 meters north and
85 meters east as shown by dashed corner ticks
There may be private inholdings within the boundaries of
the National or State reservations shown on this map



ROAD CLASSIFICATION
Light duty ——— Unimproved dirt - - - - -
State Route (circle with number)
QUADRANGLE LOCATION (map of Nevada)
USGS Historical File Topographic Division
FEB - 8 1980
BADGER MTN. NW, NEV.
N4137.5-W11922.5/7.5
1966
DMA 2167 III NW-SERIES V896

THIS MAP COMPLIES WITH NATIONAL MAP ACCURACY STANDARDS
FOR SALE BY U. S. GEOLOGICAL SURVEY, DENVER, COLORADO 80225, OR RESTON, VIRGINIA 22092
A FOLDER DESCRIBING TOPOGRAPHIC MAPS AND SYMBOLS IS AVAILABLE ON REQUEST

1400