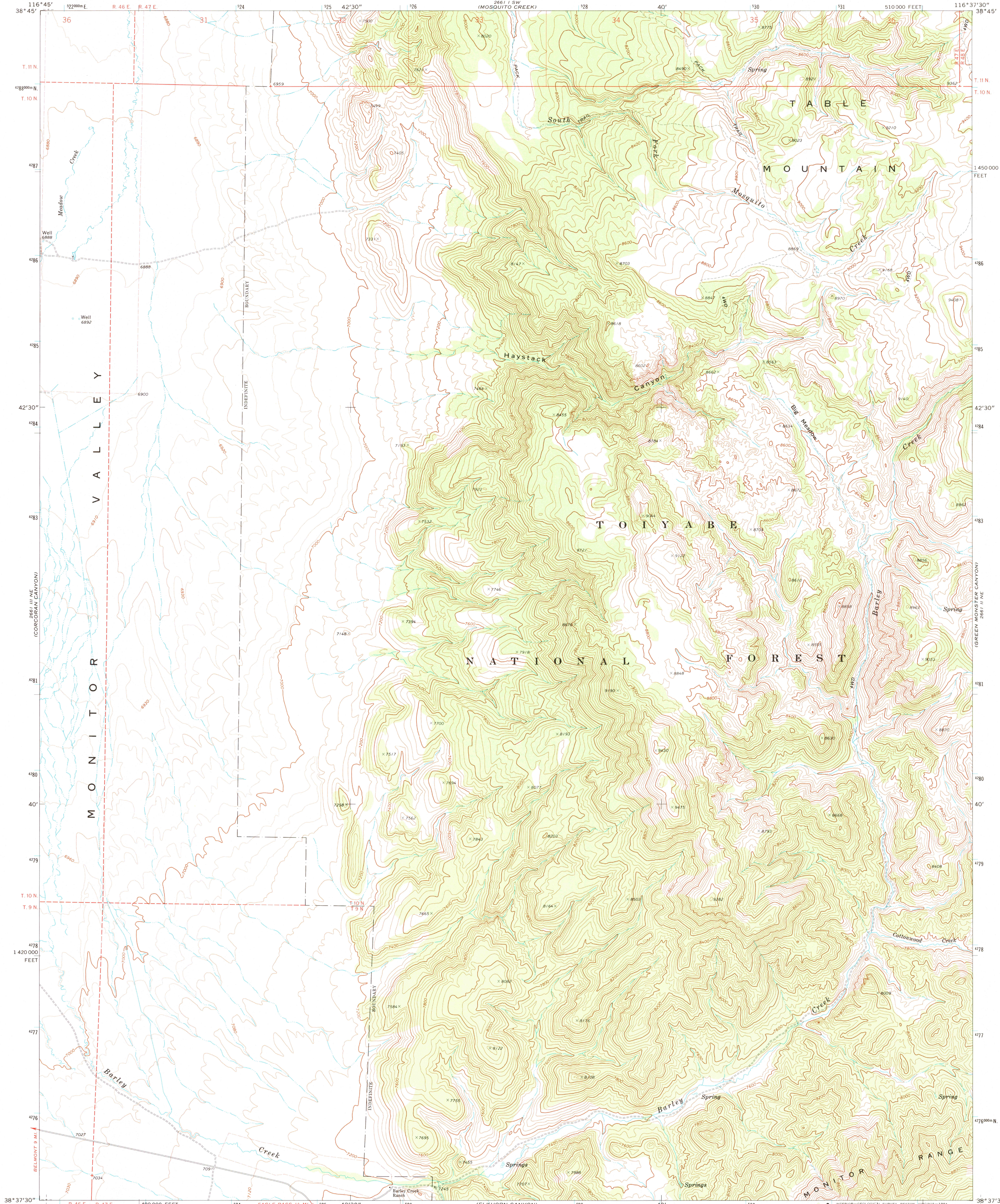


UNITED STATES
DEPARTMENT OF THE INTERIOR
GEOLOGICAL SURVEY

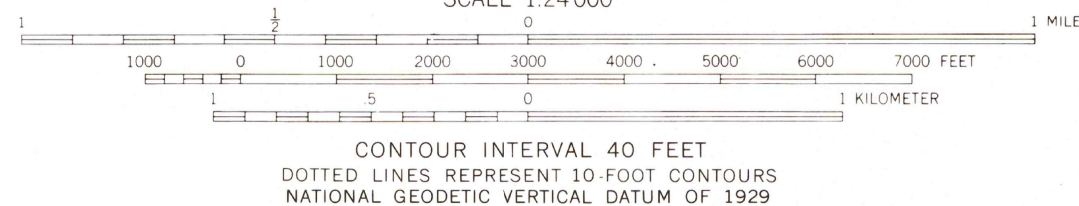
BARLEY CREEK QUADRANGLE
NEVADA—Nye Co.
7.5 MINUTE SERIES (TOPOGRAPHIC)



Mapped, edited, and published by the Geological Survey

Control by USGS and NOS/NOAA
Topography by photogrammetric methods from aerial
photographs taken 1967 and 1970. Field checked 1971
Projection and 10,000-foot grid ticks: Nevada coordinate
system, central zone (transverse Mercator)
1000-meter Universal Transverse Mercator grid ticks,
zone 11, shown in blue. 1927 North American Datum
Fine red dashed lines indicate selected fence lines
Where omitted, land lines have not been established
or are not shown because of insufficient data
There may be private inholdings within the boundaries of
the National or State reservations shown on this map

The difference between 1927 North American Datum and North
American Datum of 1983 (NAD 83) for 7.5 minute intersections is
given in USGS Bulletin 1875. The NAD 83 is shown by dashed
corner ticks



THIS MAP COMPLIES WITH NATIONAL MAP ACCURACY STANDARDS
FOR SALE BY U.S. GEOLOGICAL SURVEY
DENVER, COLORADO 80225, OR RESTON, VIRGINIA 22092
A FOLDER DESCRIBING TOPOGRAPHIC MAPS AND SYMBOLS IS AVAILABLE ON REQUEST

Map photosinspected 1980
No major culture or drainage changes observed

ROAD CLASSIFICATION
Primary highway, hard surface
Secondary highway, hard surface
Unimproved road
Interstate Route
U. S. Route
State Route

BARLEY CREEK, NEV.
38116-F6-TF-024
1971
PHOTOINSPECTED 1980
DMA 2661 II NW-SERIES V896

USGS AND HISTORICAL
MAP ARCHIVES
SEP 13 1991
REC'D FILE COPY