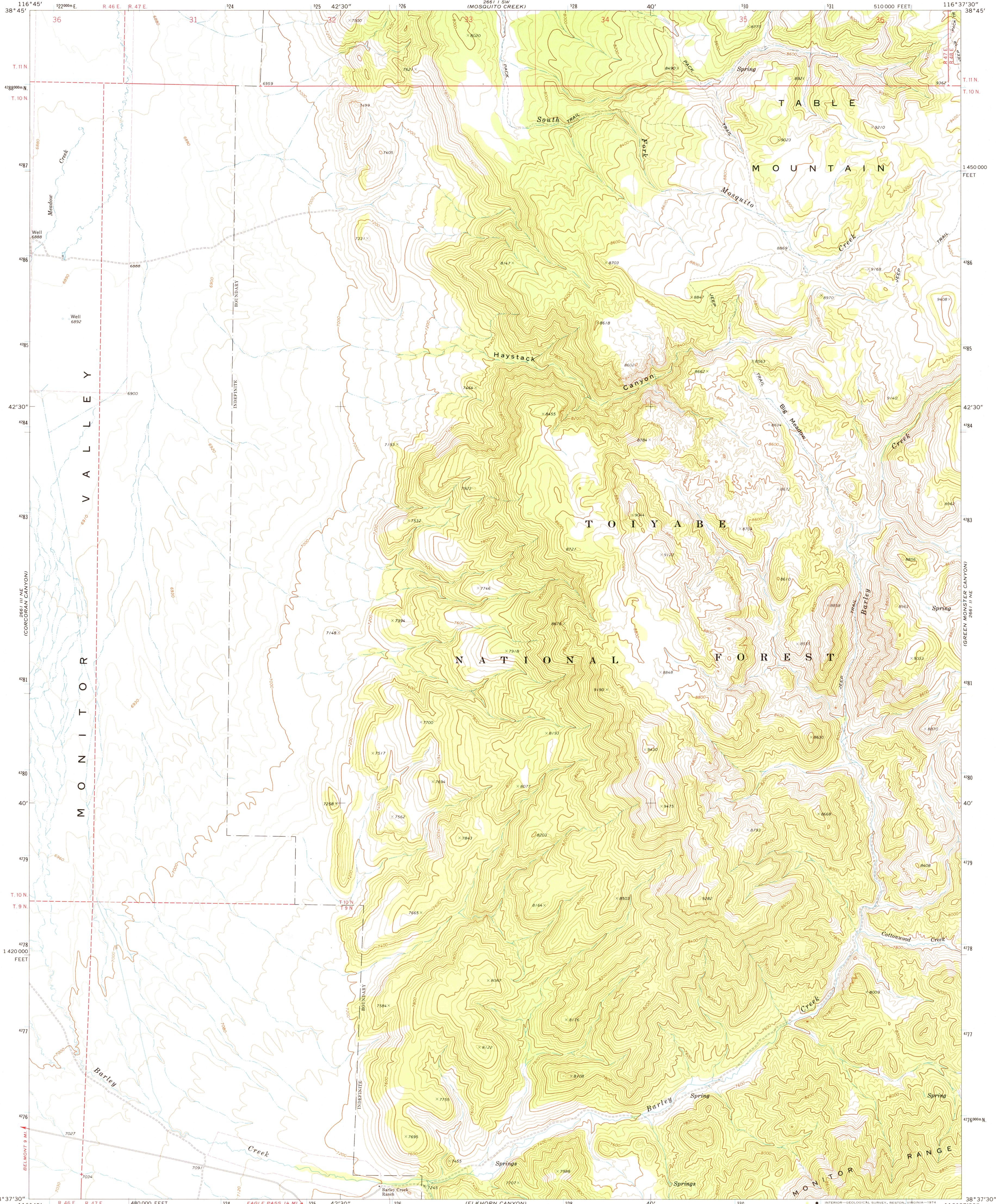
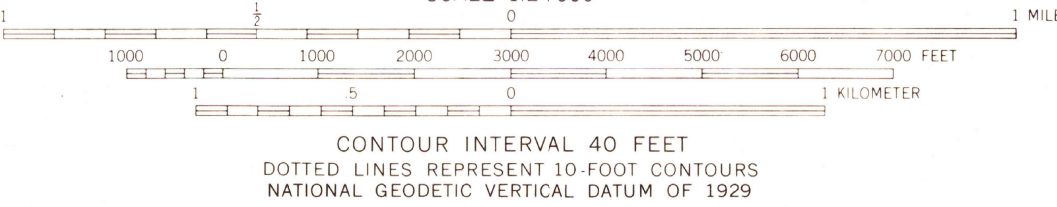
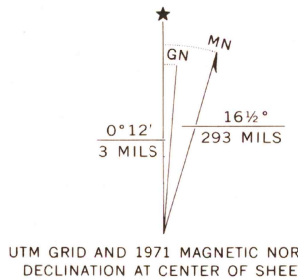


UNITED STATES  
DEPARTMENT OF THE INTERIOR  
GEOLOGICAL SURVEY

BARLEY CREEK QUADRANGLE  
NEVADA—NYE CO.  
7.5 MINUTE SERIES (TOPOGRAPHIC)



Mapped, edited, and published by the Geological Survey  
Control by USGS and USC&GS  
Topography by photogrammetric methods from aerial  
photographs taken 1967 and 1970. Field checked 1971  
Projection and 10,000-foot grid ticks: Nevada coordinate  
system, central zone (transverse Mercator)  
1000-meter Universal Transverse Mercator grid ticks,  
zone 11, shown in blue. 1927 North American datum  
Fine red dashed lines indicate selected fence lines  
Where omitted, land lines have not been established  
or are not shown because of insufficient data



THIS MAP COMPLIES WITH NATIONAL MAP ACCURACY STANDARDS  
FOR SALE BY U. S. GEOLOGICAL SURVEY, DENVER, COLORADO 80225, OR RESTON, VIRGINIA 22092  
A FOLDER DESCRIBING TOPOGRAPHIC MAPS AND SYMBOLS IS AVAILABLE ON REQUEST



ROAD CLASSIFICATION	
Primary highway, hard surface	Light-duty road, hard or improved surface
Secondary highway, hard surface	Unimproved road
Interstate Route	U. S. Route
	State Route

USGS  
Historical File  
Topographic Division

BARLEY CREEK, NEV.  
N 3837.5—W 11637.5/7.5  
1971  
AMS 2661 II NW—SERIES V896

JAN 6 1975

2950