

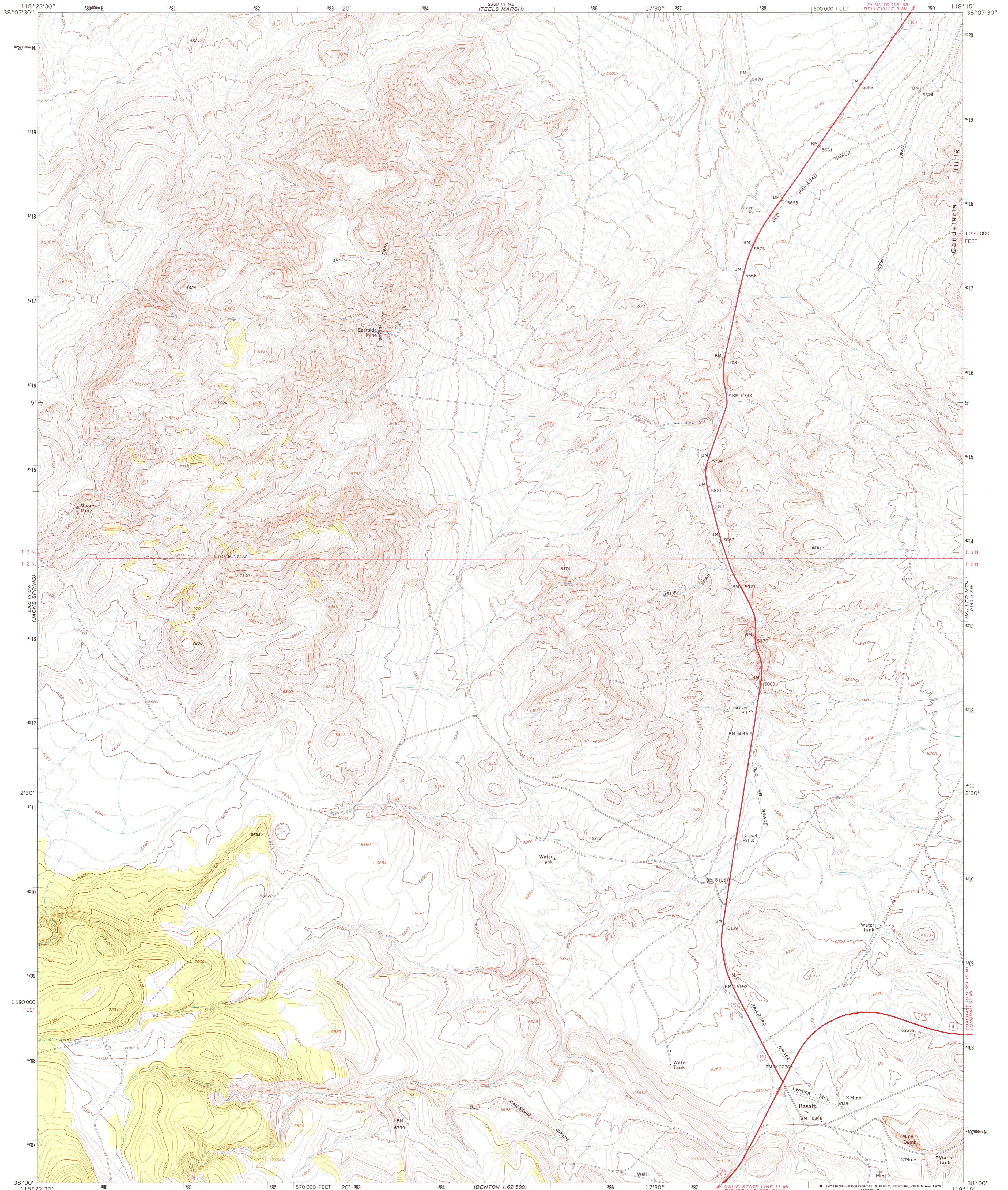
UT 12° 00' 00" N
UT 12° 00' 00" W

UNITED STATES
DEPARTMENT OF THE INTERIOR
GEOLOGICAL SURVEY



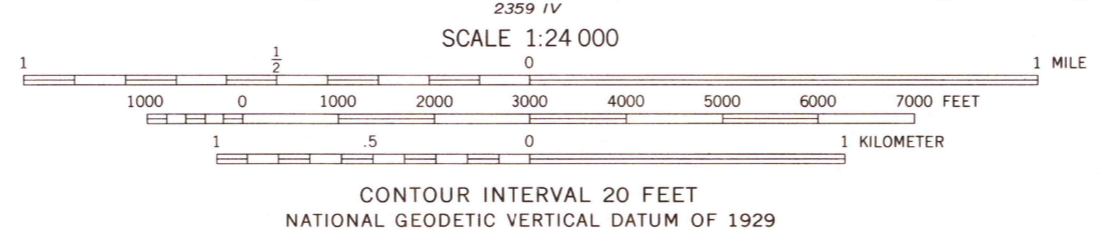
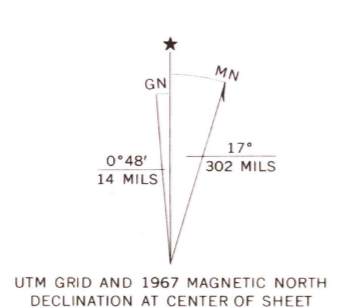
BASALT QUADRANGLE
NEVADA—MINERAL CO.
7.5 MINUTE SERIES (TOPOGRAPHIC)

2360 III NE
BELLEVILLE 9 MI



BENTON 1:62 5000
2359 W

Mapped, edited, and published by the Geological Survey
Control by USGS and USC&GS
Topography by photogrammetric methods from aerial
photographs taken 1966. Field checked 1967
Polyconic projection. 1927 North American datum
10,000-foot grid based on Nevada coordinate system, west zone
1000-meter Universal Transverse Mercator grid ticks,
zone 11, shown in blue
Where omitted, land lines have not been established
or are not shown because of insufficient data



CONTOUR INTERVAL 20 FEET
NATIONAL GEODETIC VERTICAL DATUM OF 1929
THIS MAP COMPLIES WITH NATIONAL MAP ACCURACY STANDARDS
FOR SALE BY U. S. GEOLOGICAL SURVEY, DENVER, COLORADO 80225, OR RESTON, VIRGINIA 22092
A FOLDER DESCRIBING TOPOGRAPHIC MAPS AND SYMBOLS IS AVAILABLE ON REQUEST



ROAD CLASSIFICATION
Heavy-duty ——— Light-duty ———
Unimproved dirt - - - - -
U.S. Route □ State Route ○

BASALT, NEV.
N3800—W11815/7.5

USGS
Historical File
Topographic Division

1967
AMS 2360 III SE—SERIES V896

APR 16 1978

2800