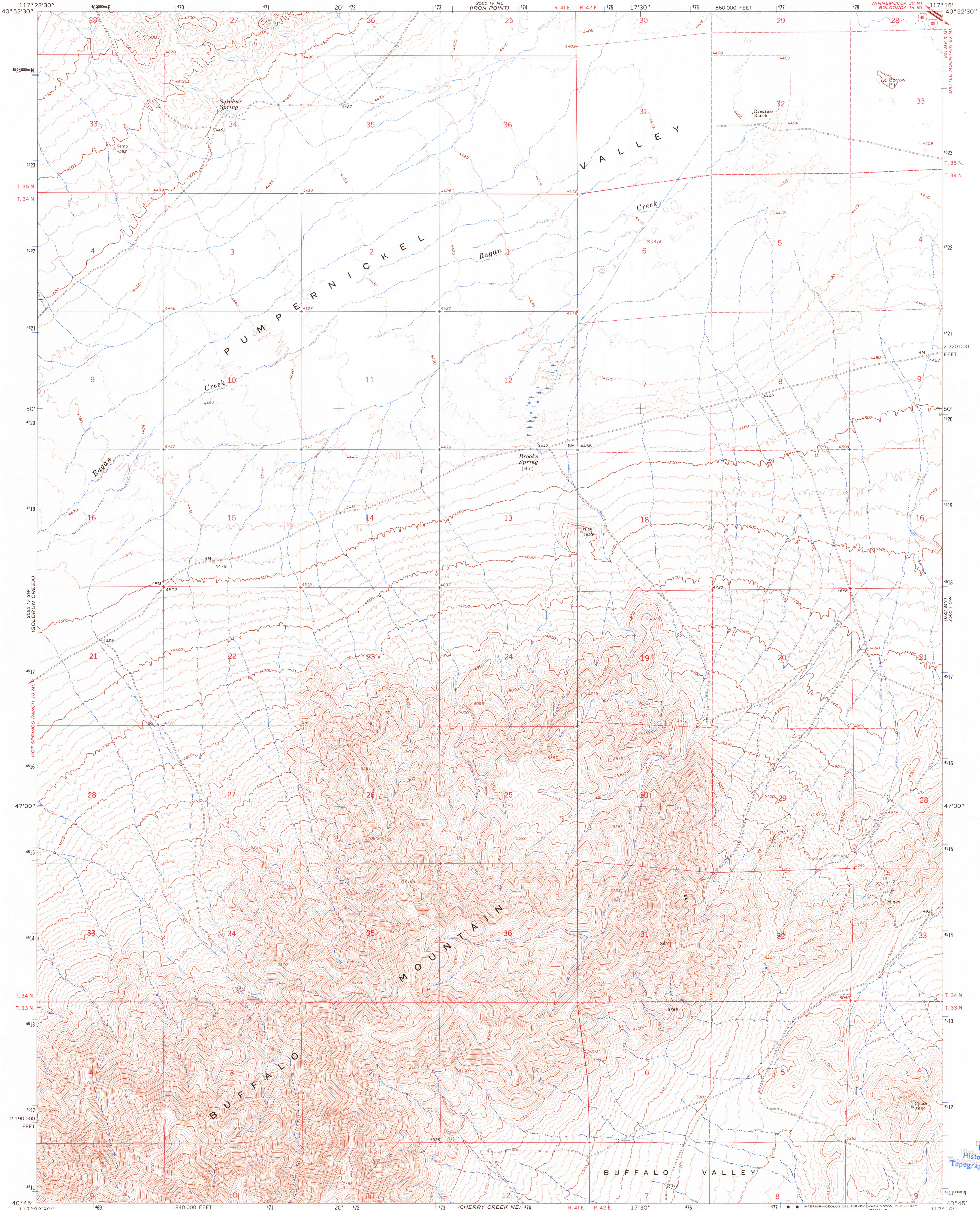
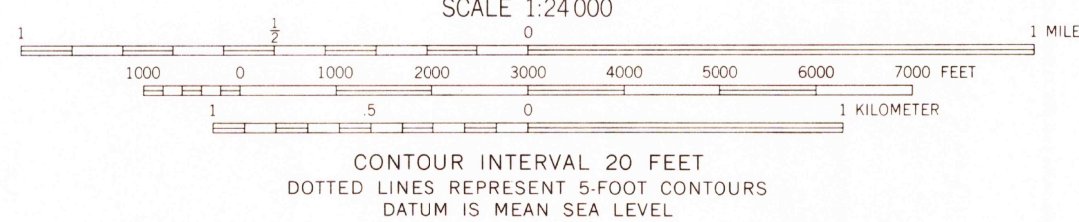
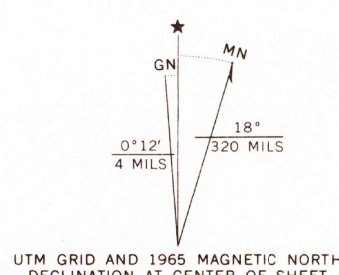


UNITED STATES  
DEPARTMENT OF THE INTERIOR  
GEOLOGICAL SURVEY

BROOKS SPRING QUADRANGLE  
NEVADA—HUMBOLDT CO.  
7.5 MINUTE SERIES (TOPOGRAPHIC)  
SE/4 EDNA MOUNTAIN 15' QUADRANGLE



Mapped, edited, and published by the Geological Survey  
Control by USGS and USC&GS  
Topography by photogrammetric methods from aerial  
photographs taken 1963. Field checked 1965  
Polyconic projection. 1927 North American datum  
10,000-foot grid based on Nevada coordinate system, west zone  
1000-meter Universal Transverse Mercator grid ticks,  
zone 11, shown in blue  
Fine red dashed lines indicate selected fence lines



ROAD CLASSIFICATION

- Heavy-duty
- Unimproved dirt
- Interstate Route
- U.S. Route

U.S.G.S. TOPOGRAPHIC DIVISION  
BROOKS SPRING, NEV.  
SE/4 EDNA MOUNTAIN 15' QUADRANGLE  
N4045—W11715/7.5

THIS MAP COMPLIES WITH NATIONAL MAP ACCURACY STANDARDS  
FOR SALE BY U.S. GEOLOGICAL SURVEY, DENVER, COLORADO 80225, OR WASHINGTON, D. C. 20242  
A FOLDER DESCRIBING TOPOGRAPHIC MAPS AND SYMBOLS IS AVAILABLE ON REQUEST

USGS  
Historical File  
Topographic Division

2715  
MAY 5 1967