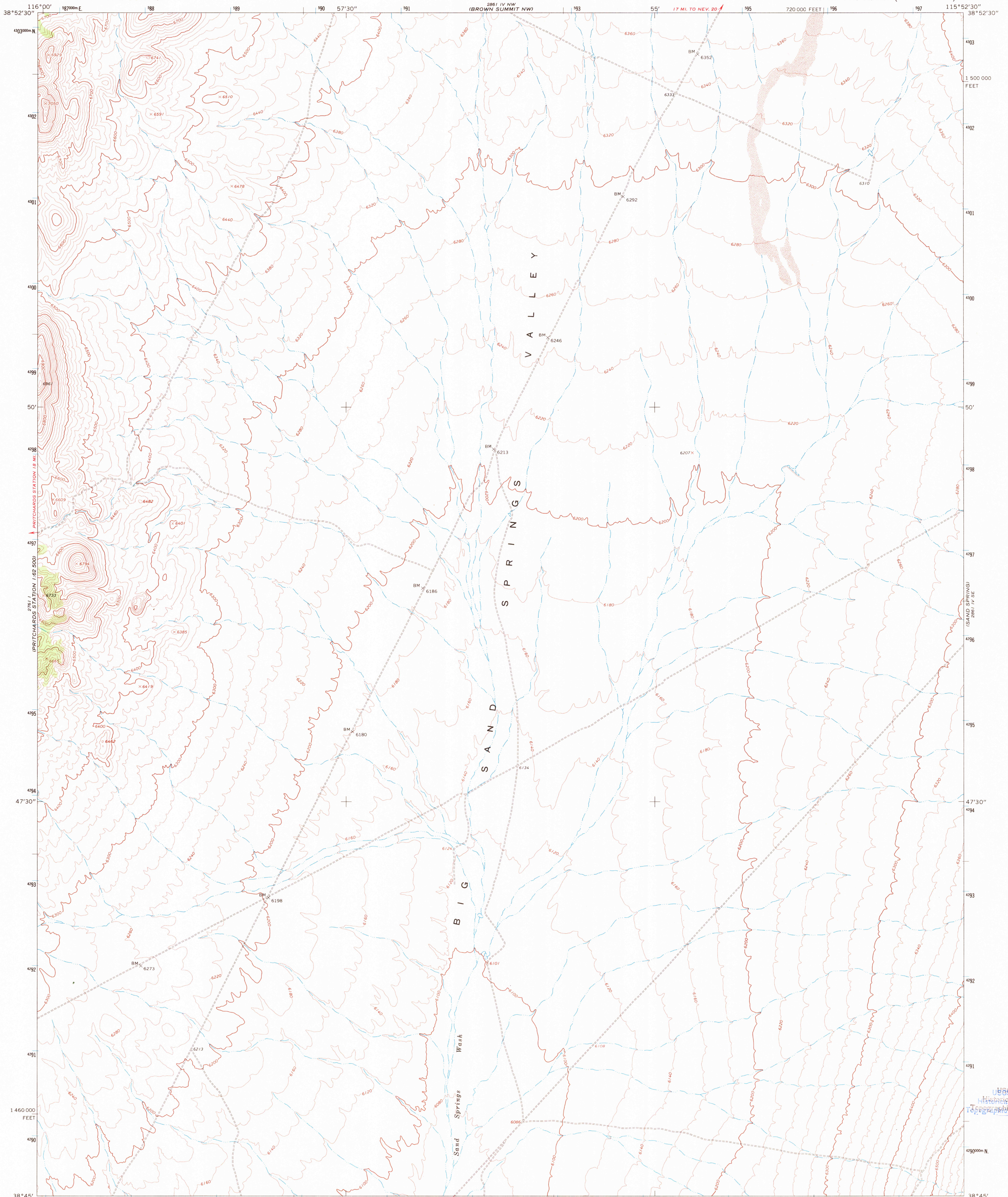
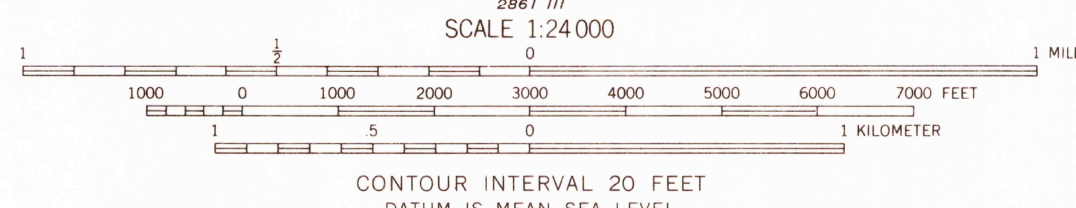


UNITED STATES
DEPARTMENT OF THE INTERIOR
GEOLOGICAL SURVEY

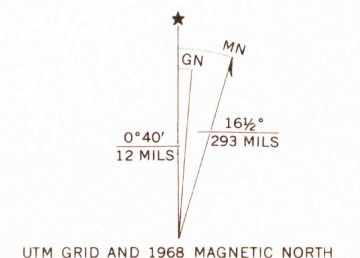
BROWN SUMMIT SW QUADRANGLE
NEVADA-NYE CO.
7.5 MINUTE SERIES (TOPOGRAPHIC)



Mapped, edited, and published by the Geological Survey
Control by USGS and USC&GS
Topography by photogrammetric methods from aerial
photographs taken 1967. Field checked 1968
Polyconic projection. 1927 North American datum
10,000-foot grid based on Nevada coordinate system, central zone
1000-meter Universal Transverse Mercator grid ticks,
zone 11, shown in blue
Land lines have not been established in this area



ROAD CLASSIFICATION
Unimproved road, fair or dry weather



THIS MAP COMPLIES WITH NATIONAL MAP ACCURACY STANDARDS
FOR SALE BY U.S. GEOLOGICAL SURVEY, DENVER, COLORADO 80225, OR WASHINGTON, D.C. 20242
A FOLDER DESCRIBING TOPOGRAPHIC MAPS AND SYMBOLS IS AVAILABLE ON REQUEST

U.S.G.S. BROWN SUMMIT SW, NEV.
N3845-W11552.5/7.5
1968
AMS 2861 IV SW-SERIES V896
FILE COPY
TOPOGRAPHIC DIVISION

2270