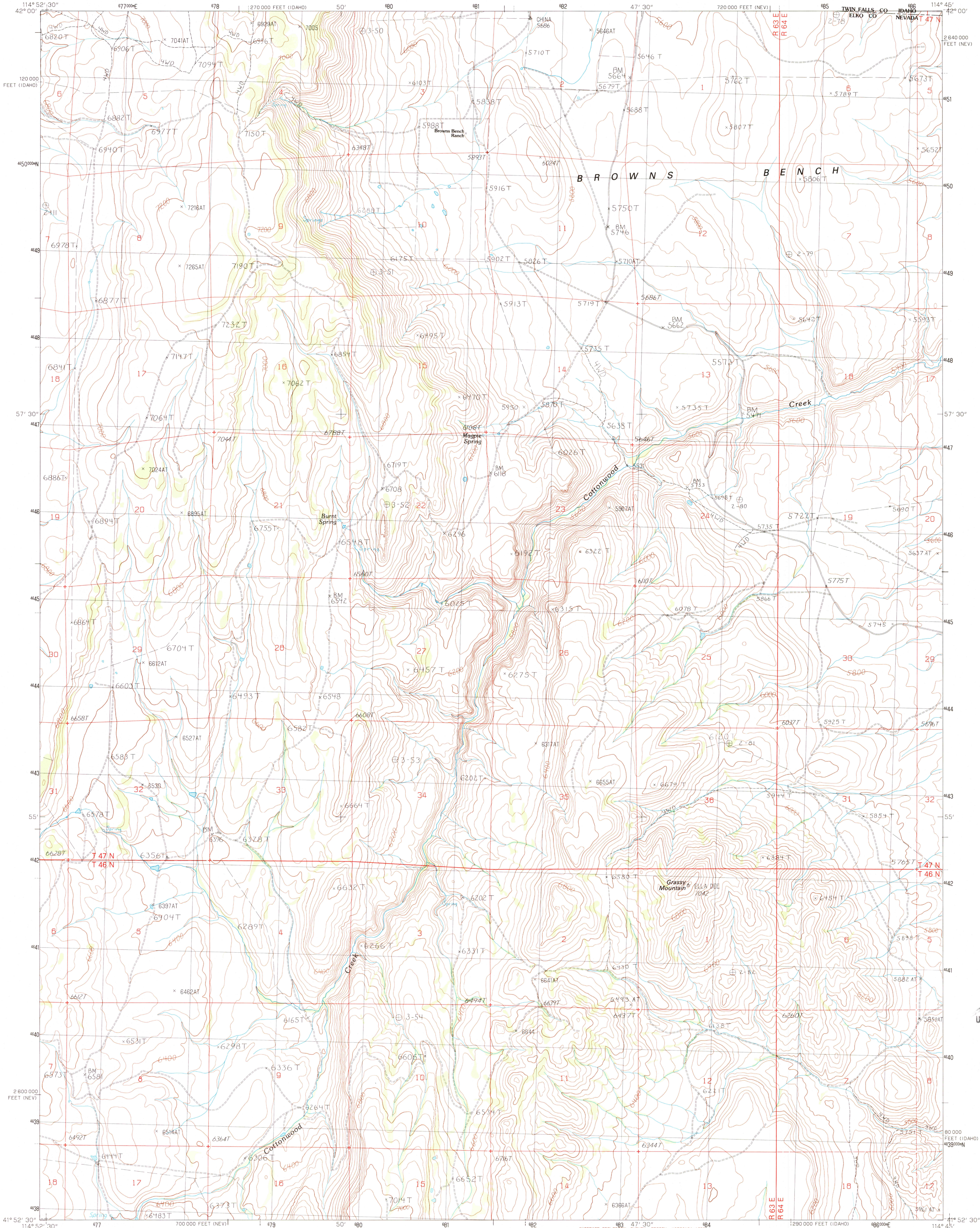


UNITED STATES
DEPARTMENT OF THE INTERIOR
GEOLOGICAL SURVEY

BROWNS BENCH RANCH QUADRANGLE
NEVADA-IDAHO
7.5 MINUTE SERIES (TOPOGRAPHIC)



PRODUCED BY THE UNITED STATES GEOLOGICAL SURVEY
CONTROL BY USGS NOS/NOAA
COMPILED FROM AERIAL PHOTOGRAPHS TAKEN 1984 AND 1985
FIELD CHECKED 1986 MAP EDITED 1989
PROJECTION TRANSVERSE MERCATOR
GRID: 1000-METER UNIVERSAL TRANSVERSE MERCATOR ZONE 11
10000-FOOT STATE GRID TICKS NEVADA, EAST ZONE
IDAHO, CENTRAL ZONE
UTM GRID DECLINATION 12° EAST
1989 MAGNETIC NORTH DECLINATION 13° 30' EAST
VERTICAL DATUM NATIONAL GEODETIC VERTICAL DATUM OF 1929
HORIZONTAL DATUM 1927 NORTH AMERICAN DATUM
To place on the predicted North American Datum of 1983,
move the projection lines as shown by dashed corner ticks
(13 meters north and 73 meters east)
There may be private inholdings within the boundaries of any
Federal and State Reservations shown on this map

PROVISIONAL MAP
Produced from original
manuscript drawings. Infor-
mation shown as of date of
photography.

THIS MAP COMPLIES WITH NATIONAL MAP ACCURACY STANDARDS
FOR SALE BY U.S. GEOLOGICAL SURVEY, DENVER, COLORADO 80225
OR RESTON, VIRGINIA 22092

1	2	3	1	Taylor Canyon
2			2	Browns Bench South
3			3	Norton Canyon
4			4	Bear Mountain
5			5	Jacks
6			6	Twin Meadows Ranch
7			7	Centas
8			8	Middle Stud Mountain

BROWNS BENCH RANCH, NEV.-IDAHO
PROVISIONAL EDITION 1989

4114-117-TF-024

USGS NMD HISTORICAL MAP
NOV 30 1989
REC'D FILE COPY