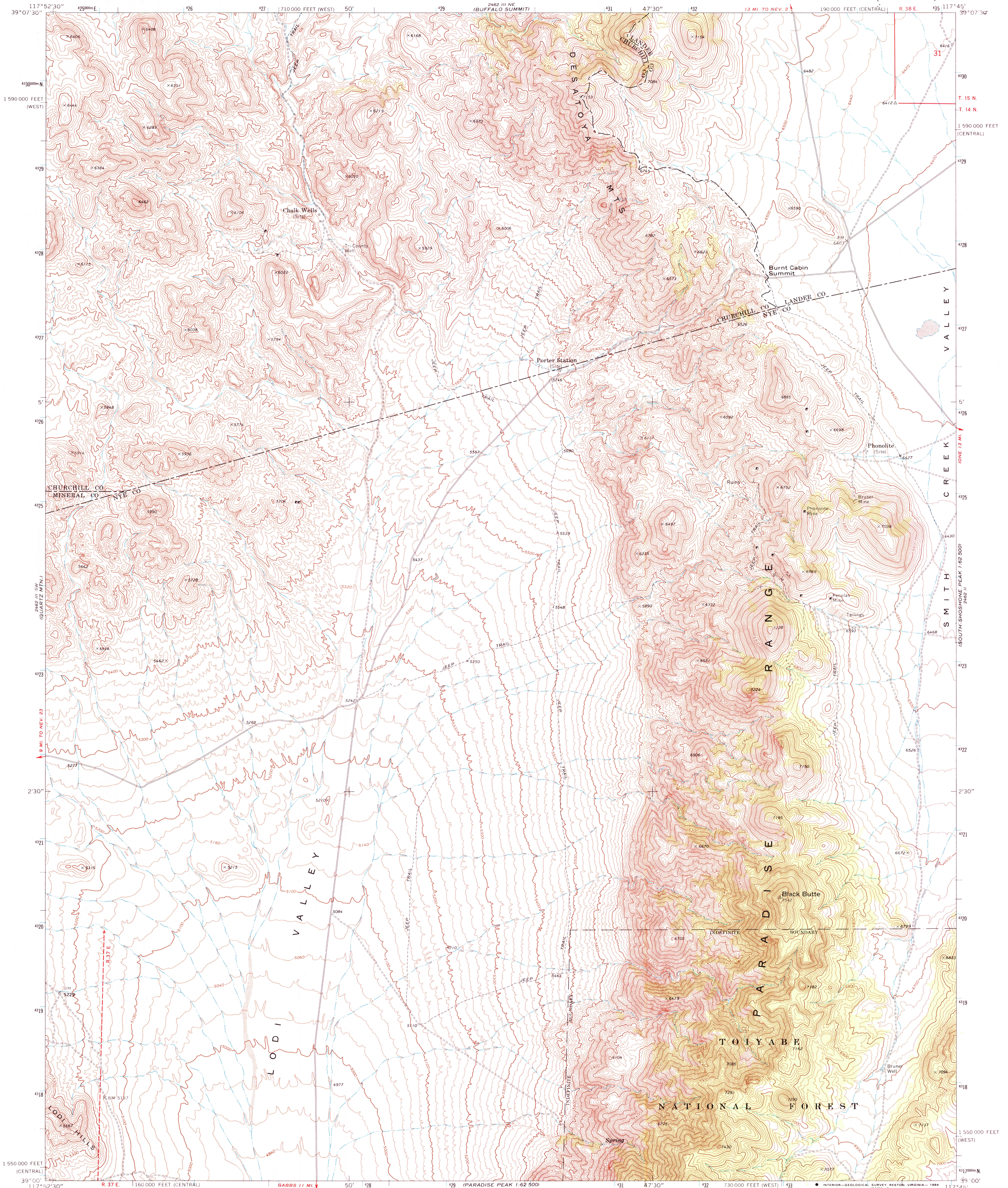


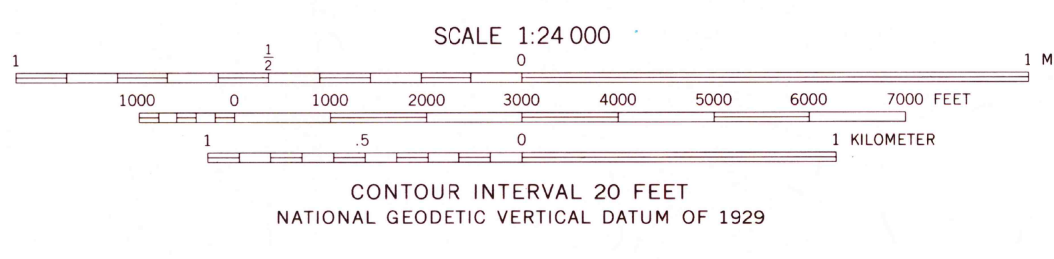
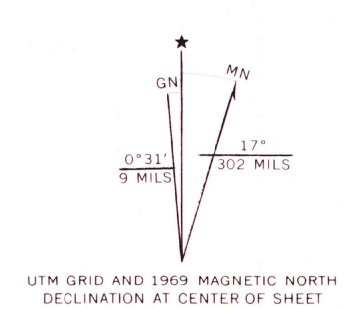
UNITED STATES
DEPARTMENT OF THE INTERIOR
GEOLOGICAL SURVEY

BURNT CABIN SUMMIT QUADRANGLE
NEVADA
7.5 MINUTE SERIES (TOPOGRAPHIC)



Mapped, edited, and published by the Geological Survey

Control by USGS and USC&GS
Topography by photogrammetric methods from aerial photographs taken 1967. Field checked 1969
Polyconic projection. 1927 North American datum 10,000-foot grids based on Nevada coordinate system, central and west zones
1000-meter Universal Transverse Mercator grid ticks, zone 11, shown in blue
To place on the predicted North American Datum 1983 move the projection lines 12 meters north and 82 meters east as shown by dashed corner ticks
Where omitted, land lines have not been established or are not shown because of insufficient data
There may be private inholdings within the boundaries of the National or State reservations shown on this map



ROAD CLASSIFICATION

Primary highway, hard surface	Light-duty road, hard or improved surface
Secondary highway, hard surface	Unimproved road
Interstate Route	U. S. Route
	State Route

QUADRANGLE LOCATION

BURNT CABIN SUMMIT, NEV.
N3900—W11745/7.5

THIS MAP COMPLIES WITH NATIONAL MAP ACCURACY STANDARDS
FOR SALE BY U. S. GEOLOGICAL SURVEY, DENVER, COLORADO 80225, OR RESTON, VIRGINIA 22092
A FOLDER DESCRIBING TOPOGRAPHIC MAPS AND SYMBOLS IS AVAILABLE ON REQUEST

Map photoinspected 1980
No major culture or drainage changes observed

1969
PHOTOINSPECTED 1980
DMA 2462 III SE—SERIES V896

RETURN TO
USGS AND HISTORICAL MAP ARCHIVES