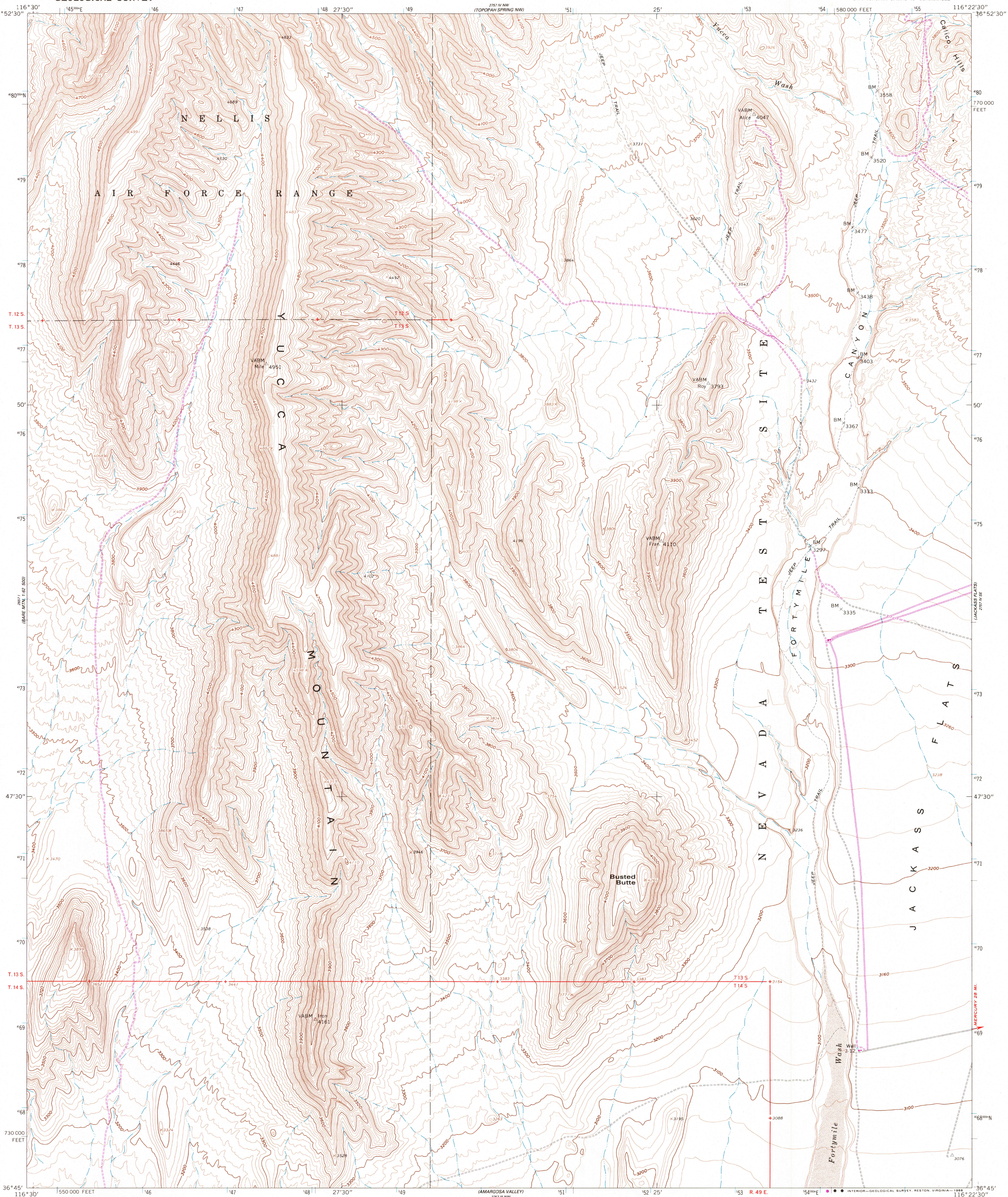


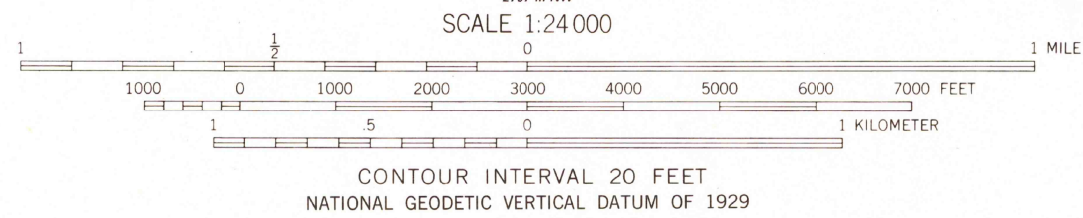
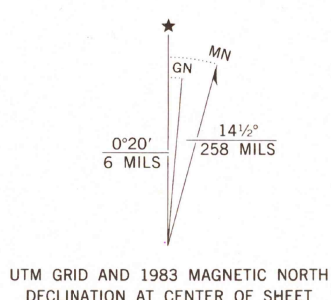
UNITED STATES  
DEPARTMENT OF THE INTERIOR  
GEOLOGICAL SURVEY

BUSTED BUTTE QUADRANGLE  
NEVADA-NYE CO.  
7.5 MINUTE SERIES (TOPOGRAPHIC)  
SW/4 TOPOPAH SPRING 15' QUADRANGLE



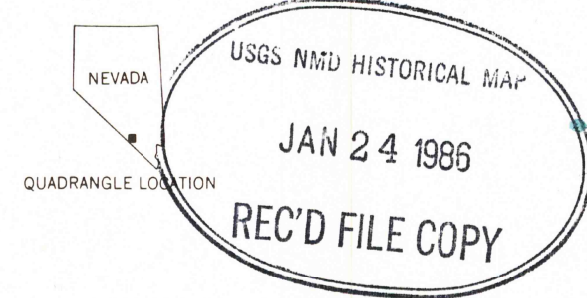
Mapped, edited, and published by the Geological Survey  
in cooperation with the Atomic Energy Commission  
Control by USGS, NOS/NOAA, and Atomic Energy Commission  
Topography by photogrammetric methods from aerial  
photographs taken 1959. Field checked 1961  
Polyconic projection. 10,000-foot grid ticks based on  
Nevada coordinate system, central zone  
1000-meter Universal Transverse Mercator grid ticks,  
zone 11, shown in blue  
1927 North American Datum  
To place on the predicted North American Datum 1983  
move the projection lines 8 meters north and  
78 meters east as shown by dashed corner ticks  
There may be private inholdings within the boundaries of  
the National or State reservations shown on this map

Revisions shown in purple and woodland compiled from aerial  
photographs taken 1960 and other sources. This information  
not field checked. Map edited 1983



THIS MAP COMPLIES WITH NATIONAL MAP ACCURACY STANDARDS  
FOR SALE BY U. S. GEOLOGICAL SURVEY, DENVER, COLORADO 80225, OR RESTON, VIRGINIA 22092  
A FOLDER DESCRIBING TOPOGRAPHIC MAPS AND SYMBOLS IS AVAILABLE ON REQUEST

ROAD CLASSIFICATION  
Light-duty ————— Unimproved dirt - - - - -



BUSTED BUTTE, NEV.  
(FORMERLY TOPOPAH SPRING SW)  
SW/4 TOPOPAH SPRING 15' QUADRANGLE  
36116-04-TF-024

1961  
PHOTOREVISED 1983  
DMA 2757 IV SW-SERIES V896