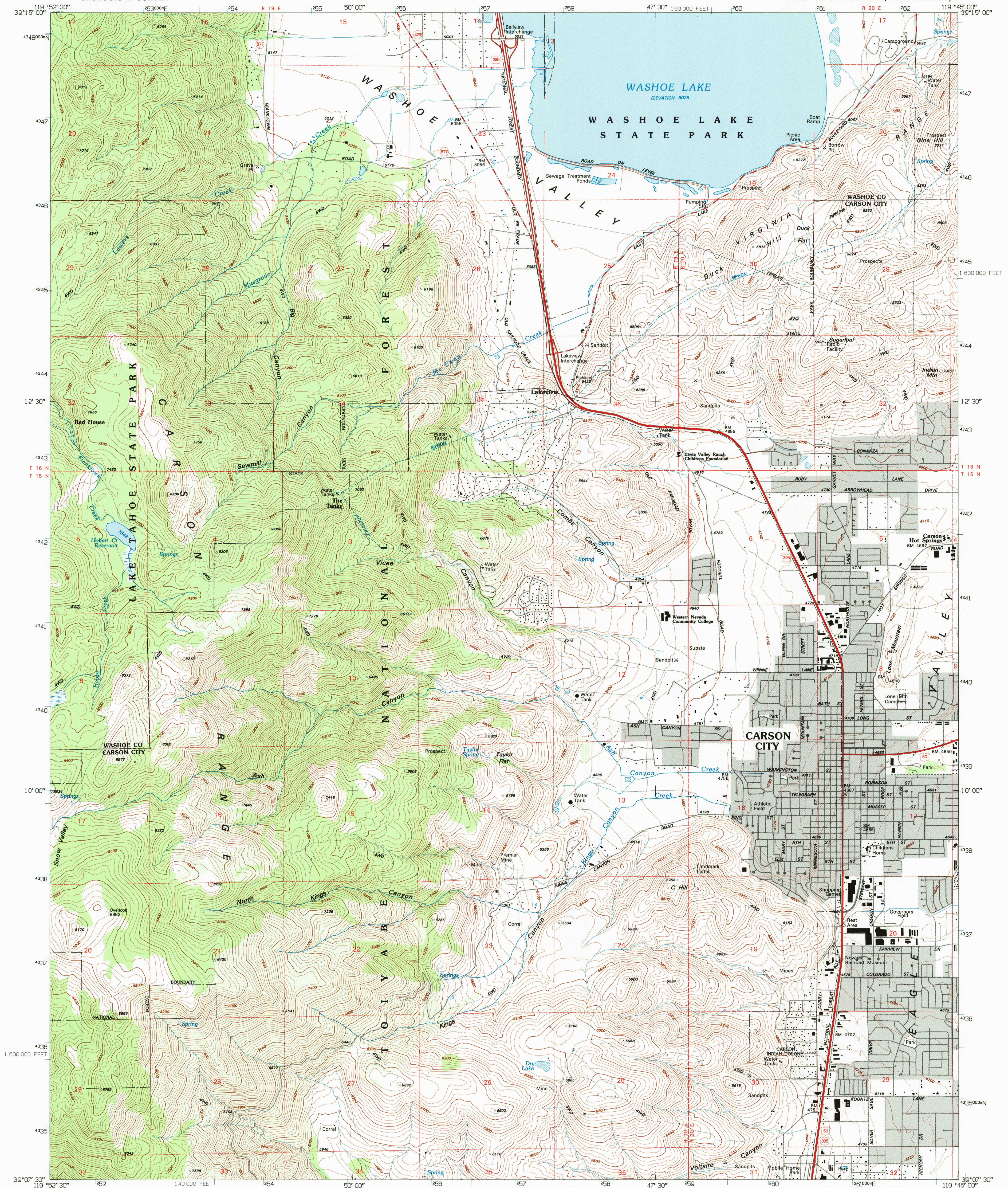
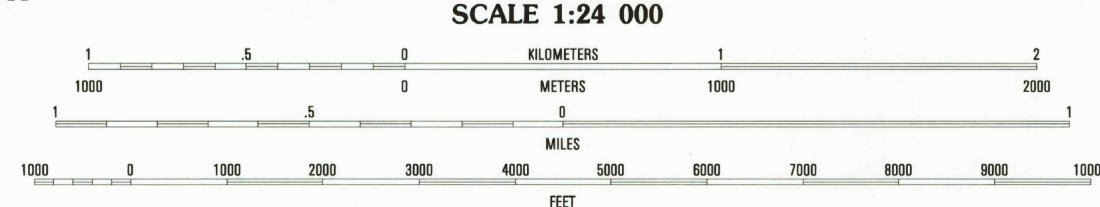
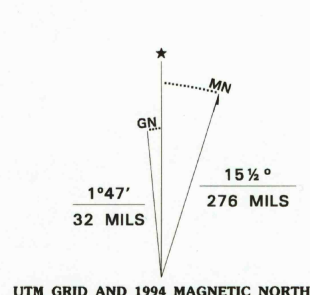


UNITED STATES
DEPARTMENT OF THE INTERIOR
GEOLOGICAL SURVEY

CARSON CITY QUADRANGLE
NEVADA
7.5 MINUTE SERIES (TOPOGRAPHIC)

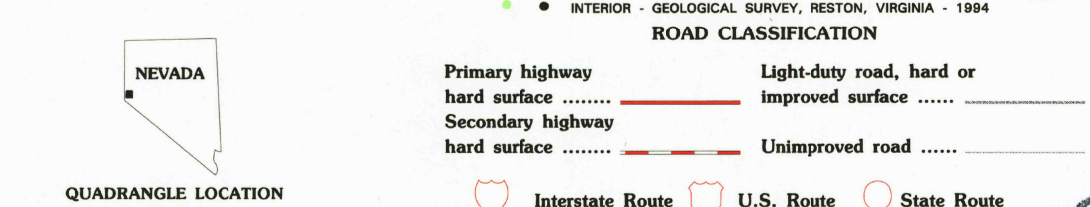


Produced by the United States Geological Survey
Control by USGS and NOS/NOAA
Compiled from aerial photographs taken 1966. Field checked 1968
Revised from aerial photographs taken 1990 and other sources
Map edited 1994. Contours and land elevations have not been
revised and may conflict with other content
North American Datum of 1927 (NAD 27). Projection and
blue 1000-meter ticks: Universal Transverse Mercator, zone 11
10 000-foot ticks: Nevada Coordinate System, west zone
North American Datum of 1983 (NAD 83) is shown by dashed corner ticks
The values of the shift between NAD 27 and 83 for 7.5-minute intersections
are obtainable from National Geodetic Survey NADCON software
There may be private inholdings within the boundaries of the
National or State reservations shown on this map
Fine red dashed lines indicate selected fence and field lines where
generally visible on aerial photographs. This information is unchecked



SCALE 1:24 000
CONTOUR INTERVAL 40 FEET
SUPPLEMENTARY CONTOUR INTERVAL 10 FEET
NATIONAL GEODETIC VERTICAL DATUM OF 1929
TO CONVERT FEET TO METERS MULTIPLY BY 0.3048
TO CONVERT METERS TO FEET MULTIPLY BY 3.2808

THIS MAP COMPLES WITH NATIONAL MAP ACCURACY STANDARDS
FOR SALE BY U.S. GEOLOGICAL SURVEY
DENVER, COLORADO 80225, OR RESTON, VIRGINIA 22092
A FOLDER DESCRIBING TOPOGRAPHIC MAPS AND SYMBOLS IS AVAILABLE ON REQUEST



1	2	3	4	5	6	7	8
1	2	3	4	5	6	7	8

ADJOINING 7.5' QUADRANGLE NAMES
1 Mount Rose
2 Washoe City
3 Virginia City
4 Marlette Lake
5 New Empire
6 Glenbrook
7 Genoa
8 McManahan Hill
DMA 2062 III NE-SERIES V896