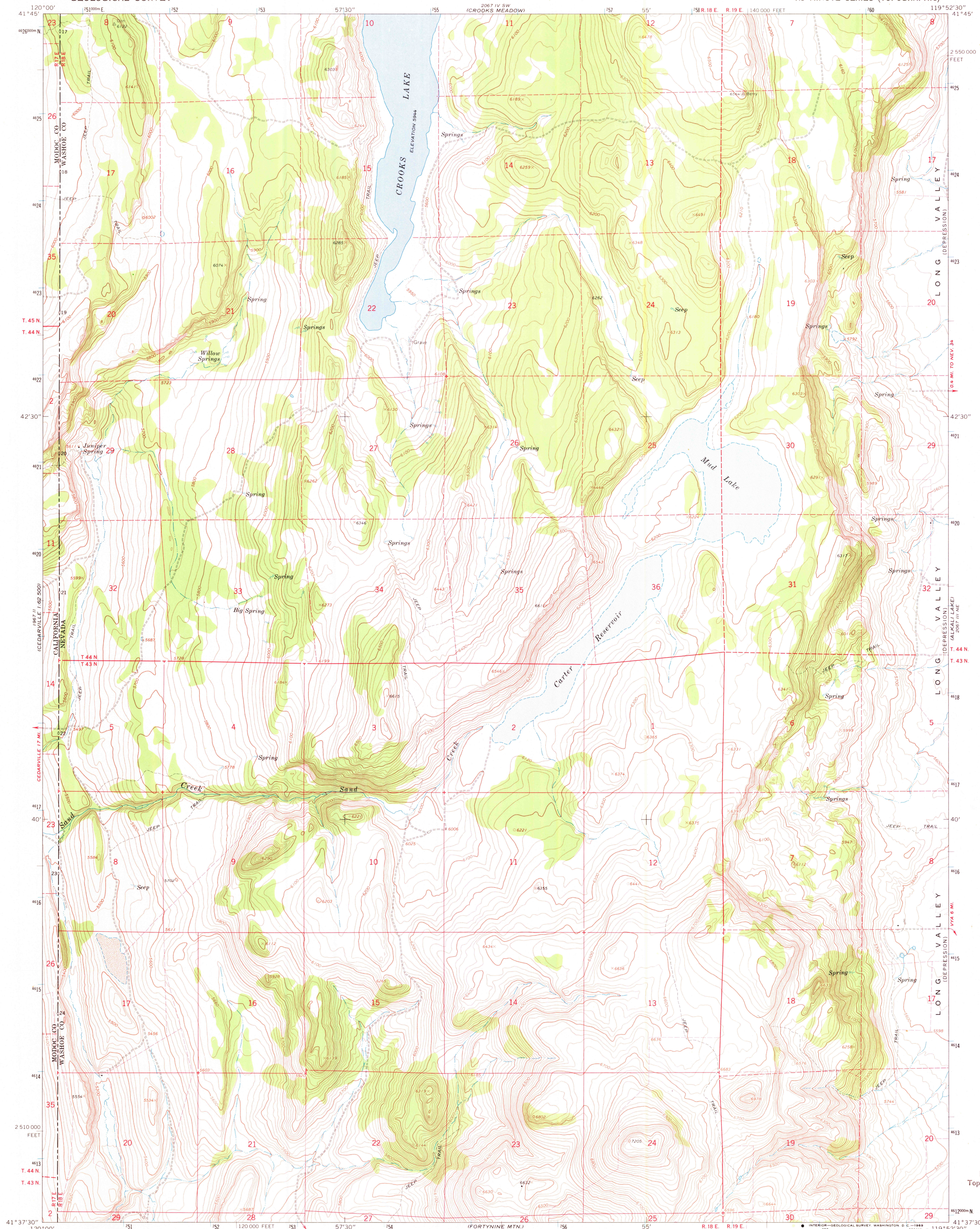


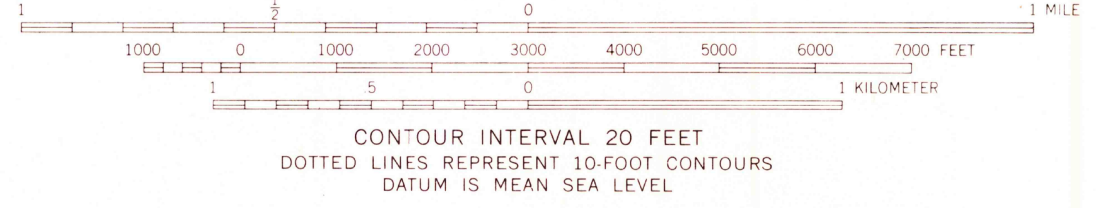
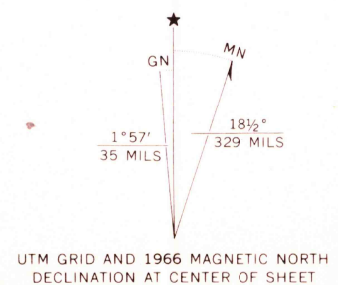
UNITED STATES
DEPARTMENT OF THE INTERIOR
GEOLOGICAL SURVEY

CARTER RESERVOIR QUADRANGLE
NEVADA—CALIFORNIA
7.5 MINUTE SERIES (TOPOGRAPHIC)

2007 IV SW
MOBOTTI VALLEY



Mapped, edited, and published by the Geological Survey
Control by USGS, USC&GS, and U. S. Forest Service
Topography by photogrammetric methods from aerial
photographs taken 1965. Field checked 1966
Polyconic projection. 1927 North American datum
10,000-foot grid based on Nevada coordinate system, west zone
1000-meter Universal Transverse Mercator grid ticks,
zone 11, shown in blue
Fine red dashed lines indicate selected fence lines



CARTER RESERVOIR, NEV.—CALIF.
N4137.5—W11952.5/7.5

USGS
Historical File
Topographic Division
ROAD CLASSIFICATION
Unimproved dirt
TOPOGRAPHIC DIVISION

THIS MAP COMPLIES WITH NATIONAL MAP ACCURACY STANDARDS
FOR SALE BY U. S. GEOLOGICAL SURVEY, DENVER, COLORADO 80225, OR WASHINGTON, D. C. 20242
A FOLDER DESCRIBING TOPOGRAPHIC MAPS AND SYMBOLS IS AVAILABLE ON REQUEST

1966

AMS 2067 III NW—SERIES V896

3465
OCT 9 1969