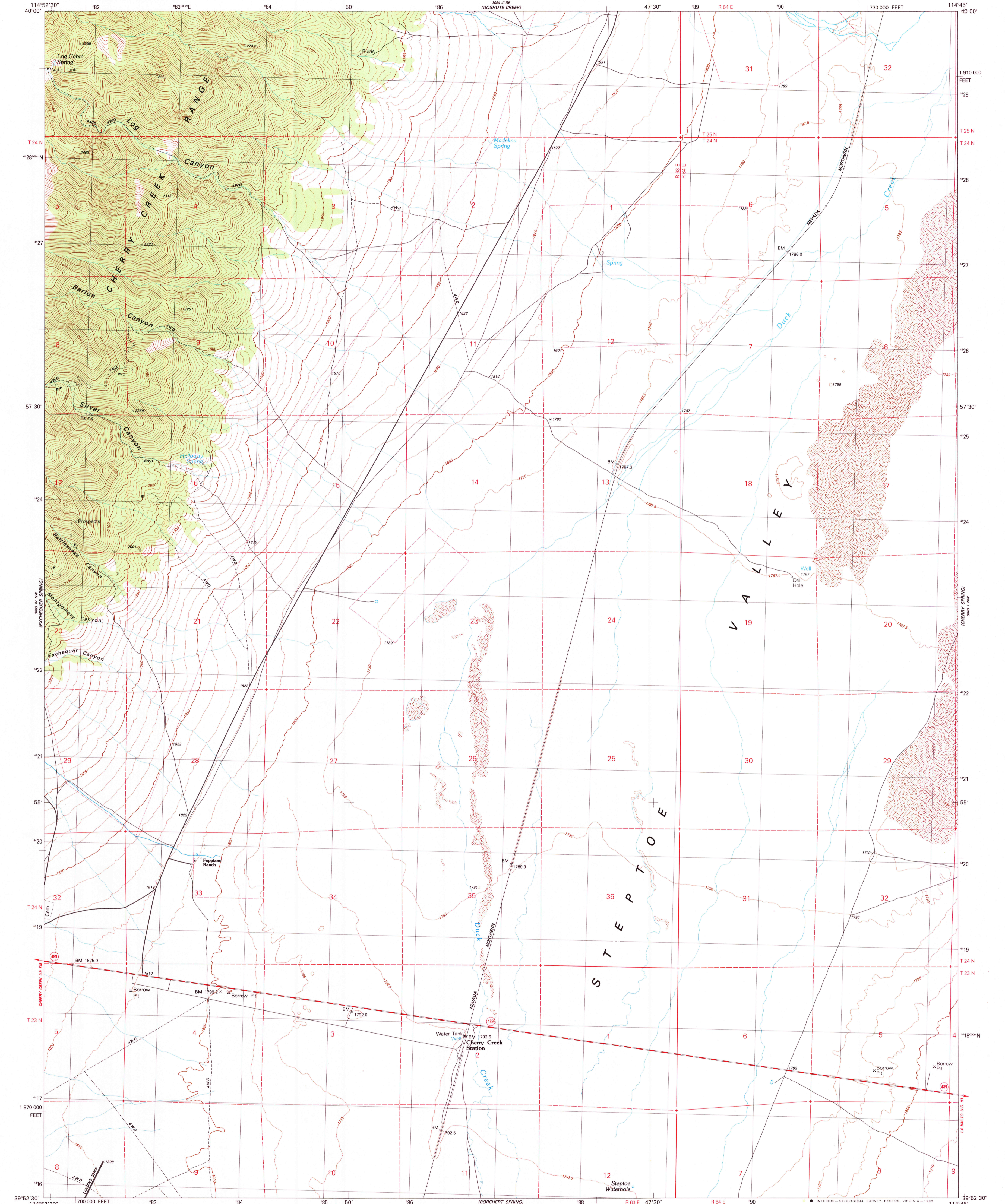


UNITED STATES  
DEPARTMENT OF THE INTERIOR  
GEOLOGICAL SURVEY

CHERRY CREEK STATION QUADRANGLE  
NEVADA—WHITE PINE CO.  
7.5 MINUTE SERIES (TOPOGRAPHIC)



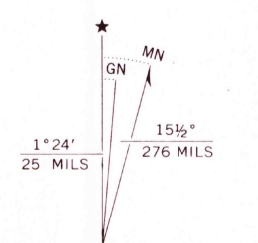
Produced by the United States Geological Survey

Control by USGS and NOS/NOAA  
Compiled by photogrammetric methods from aerial photographs  
taken 1975. Field checked 1976. Map edited 1982

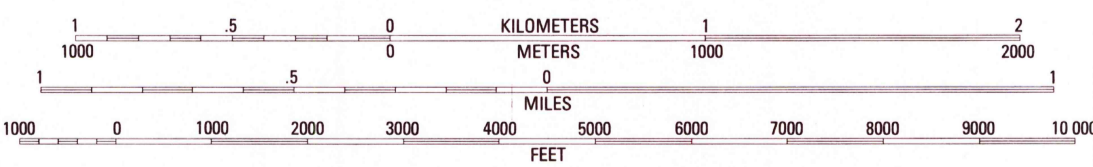
Projection and 1000-meter grid, zone 11,  
Universal Transverse Mercator  
10,000-foot grid ticks based on Nevada coordinate  
system, east zone. 1927 North American Datum

To place on the predicted North American Datum 1983  
move the projection lines 10 meters north and  
73 meters east as shown by dashed corner ticks

Fine red dashed lines indicate selected fence and field lines where  
generally visible on aerial photographs. This information is unchecked  
Where omitted, land lines have not been established



UTM GRID and 1982 MAGNETIC NORTH  
DECLINATION AT CENTER OF SHEET

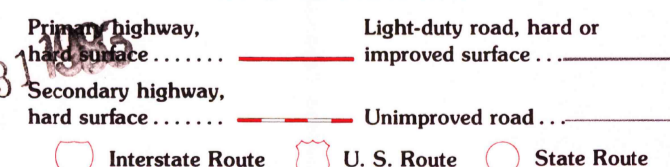


SCALE 1:24 000  
CONTOUR INTERVAL 10 METERS  
SUPPLEMENTARY CONTOUR INTERVAL 2.5 METERS  
NATIONAL GEODETIC VERTICAL DATUM OF 1929  
CONTROL ELEVATIONS SHOWN TO THE NEAREST 0.1 METER  
OTHER ELEVATIONS SHOWN TO THE NEAREST METER  
TO CONVERT FEET TO METERS MULTIPLY BY 0.3048  
TO CONVERT METERS TO FEET MULTIPLY BY 3.2808

THIS MAP COMPLIES WITH NATIONAL MAP ACCURACY STANDARDS  
FOR SALE BY U. S. GEOLOGICAL SURVEY, DENVER, COLORADO 80225, OR RESTON, VIRGINIA 22092  
A FOLDER DESCRIBING TOPOGRAPHIC MAPS AND SYMBOLS IS AVAILABLE ON REQUEST

CONTOURS AND ELEVATIONS  
IN METERS

ROAD CLASSIFICATION



QUADRANGLE LOCATION

CHERRY CREEK STATION, NEV.  
N3952.5—W11445.7.5

1982

DMA 3063 IV NE-SERIES V896

REVISION #1  
1:24,000 U.S. GEOLOGICAL SURVEY