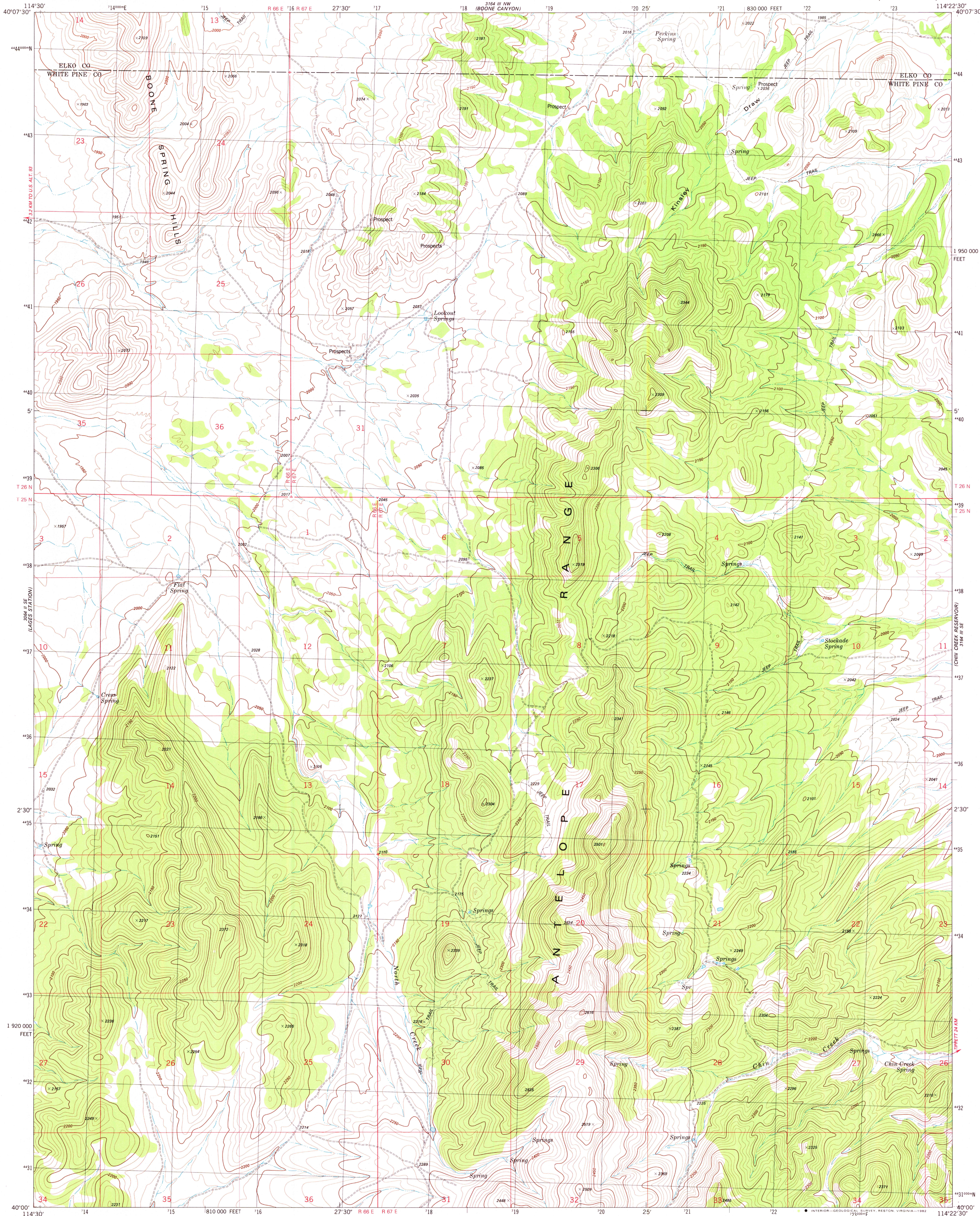


UNITED STATES
DEPARTMENT OF THE INTERIOR
GEOLOGICAL SURVEY

CHIN CREEK SPRING QUADRANGLE
NEVADA
7.5 MINUTE SERIES (TOPOGRAPHIC)



Mapped, edited, and published by the Geological Survey

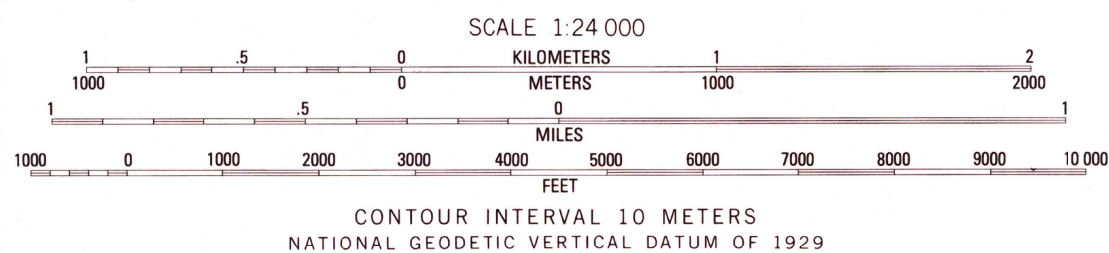
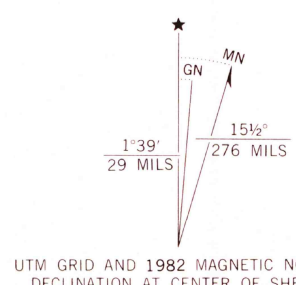
Control by USGS and NOS/NOAA

Topography by photogrammetric methods from aerial photographs taken 1979. Field checked 1980. Map edited 1982

Projection and 10,000-foot grid ticks: Nevada coordinate system, east zone (transverse Mercator) 1000-meter Universal Transverse Mercator grid, zone 11 1927 North American datum

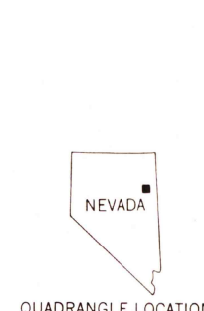
To place on the predicted North American Datum 1983 move the projection lines 10 meters north and 72 meters east as shown by dashed corner ticks

Certain land lines are omitted because of insufficient data



CONTOUR INTERVAL 10 METERS
NATIONAL GEODETIC VERTICAL DATUM OF 1929

THIS MAP COMPLIES WITH NATIONAL MAP ACCURACY STANDARDS
FOR SALE BY U. S. GEOLOGICAL SURVEY, DENVER, COLORADO 80225, OR RESTON, VIRGINIA 22092
A FOLDER DESCRIBING TOPOGRAPHIC MAPS AND SYMBOLS IS AVAILABLE ON REQUEST



ROAD CLASSIFICATION
Primary highway, hard surface
Secondary highway, hard surface
Unimproved road
Interstate Route
U. S. Route
State Route

CHIN CREEK SPRING, NEV.
N4000-W11422.5/7.5

1982

DMA 3164 III SW-SERIES Y896

CONTOURS AND ELEVATIONS IN METERS

FEB 7 - 1982

2150
REMOVED
MOUNTAIN