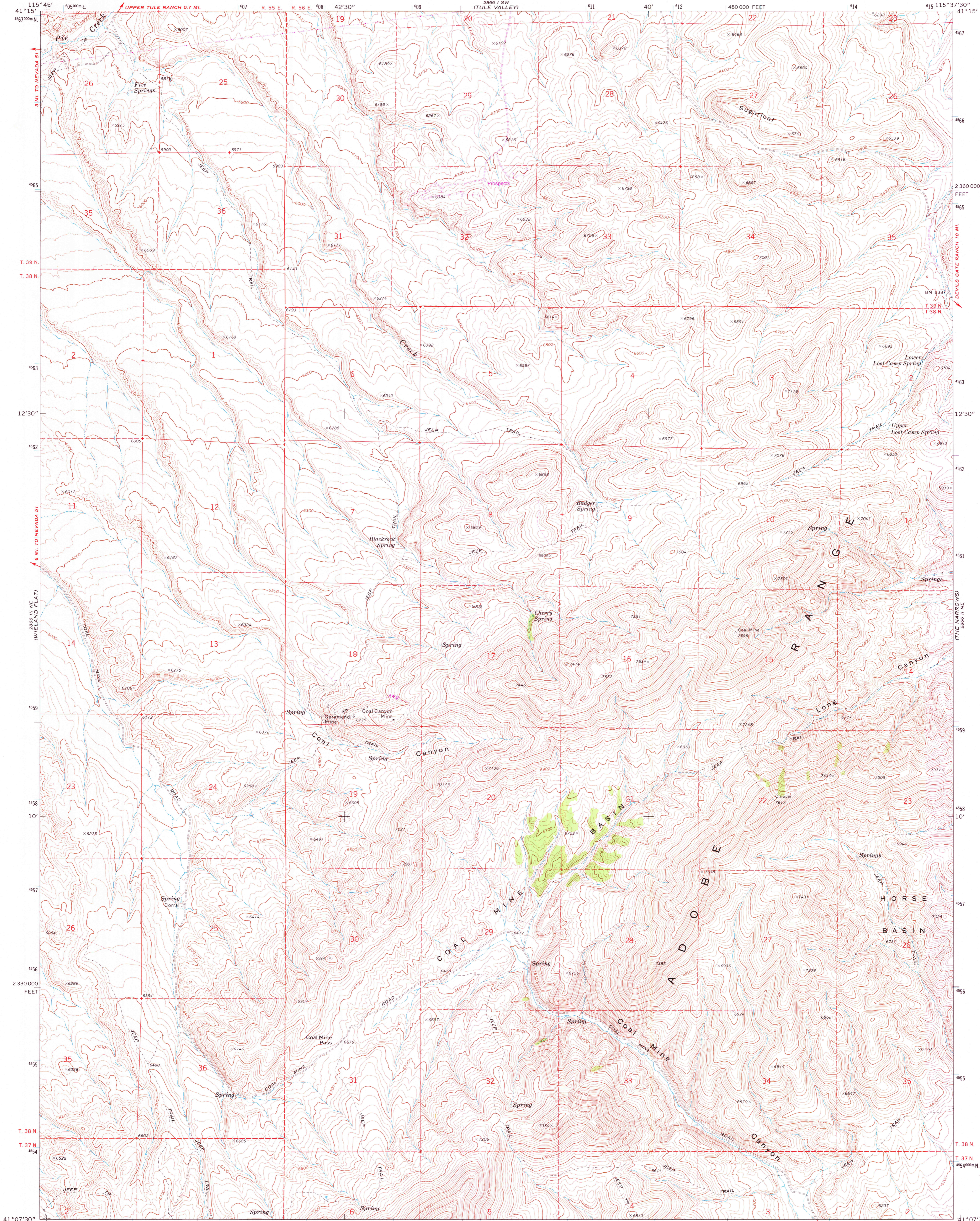
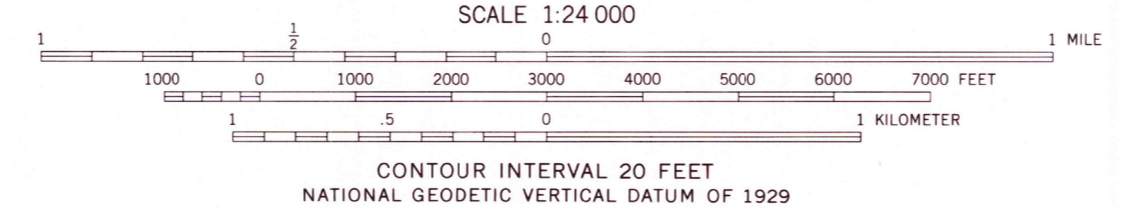
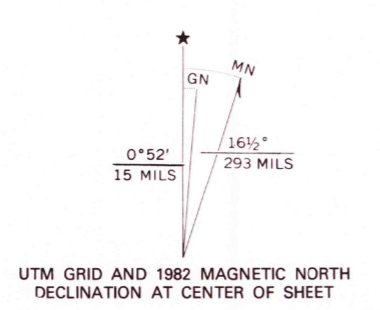


UNITED STATES  
DEPARTMENT OF THE INTERIOR  
GEOLOGICAL SURVEY

COAL MINE BASIN QUADRANGLE  
NEVADA—ELKO CO.  
7.5 MINUTE SERIES (TOPOGRAPHIC)



Mapped, edited, and published by the Geological Survey  
Control by USGS and NOS/NOAA  
Topography by photogrammetric methods from aerial photographs taken 1968. Field checked 1971  
Projection and 10,000-foot grid ticks: Nevada coordinate system, east zone (Transverse Mercator)  
100-meter Universal Transverse Mercator grid ticks, zone 11, shown in blue. 1927 North American datum  
To place on the predicted North American Datum 1983, move the projection lines 13 meters north and 75 meters east as shown by dashed corner ticks  
Fine red dashed lines indicate selected fence lines



CONTOUR INTERVAL 20 FEET  
NATIONAL GEODETIC VERTICAL DATUM OF 1929



ROAD CLASSIFICATION

Primary highway, hard surface	Light-duty road, hard or improved surface
Secondary highway, hard surface	Unimproved road
Interstate Route	U. S. Route
	State Route

THIS MAP COMPLIES WITH NATIONAL MAP ACCURACY STANDARDS  
FOR SALE BY U. S. GEOLOGICAL SURVEY, DENVER, COLORADO 80225, OR RESTON, VIRGINIA 22092  
A FOLDER DESCRIBING TOPOGRAPHIC MAPS AND SYMBOLS IS AVAILABLE ON REQUEST

Revisions shown in purple compiled from aerial photographs taken 1980 and other source data. This information not field checked. Map edited 1982

COAL MINE BASIN, NEV.  
N4107.5—W11537.5/7.5

1971  
PHOTOREVISED 1982  
DMA 2866 II NW—SERIES V896

DEC 15 1982

RETURN TO \*  
USGS TMD HT-STOR/CAL MAP ARCHIVE