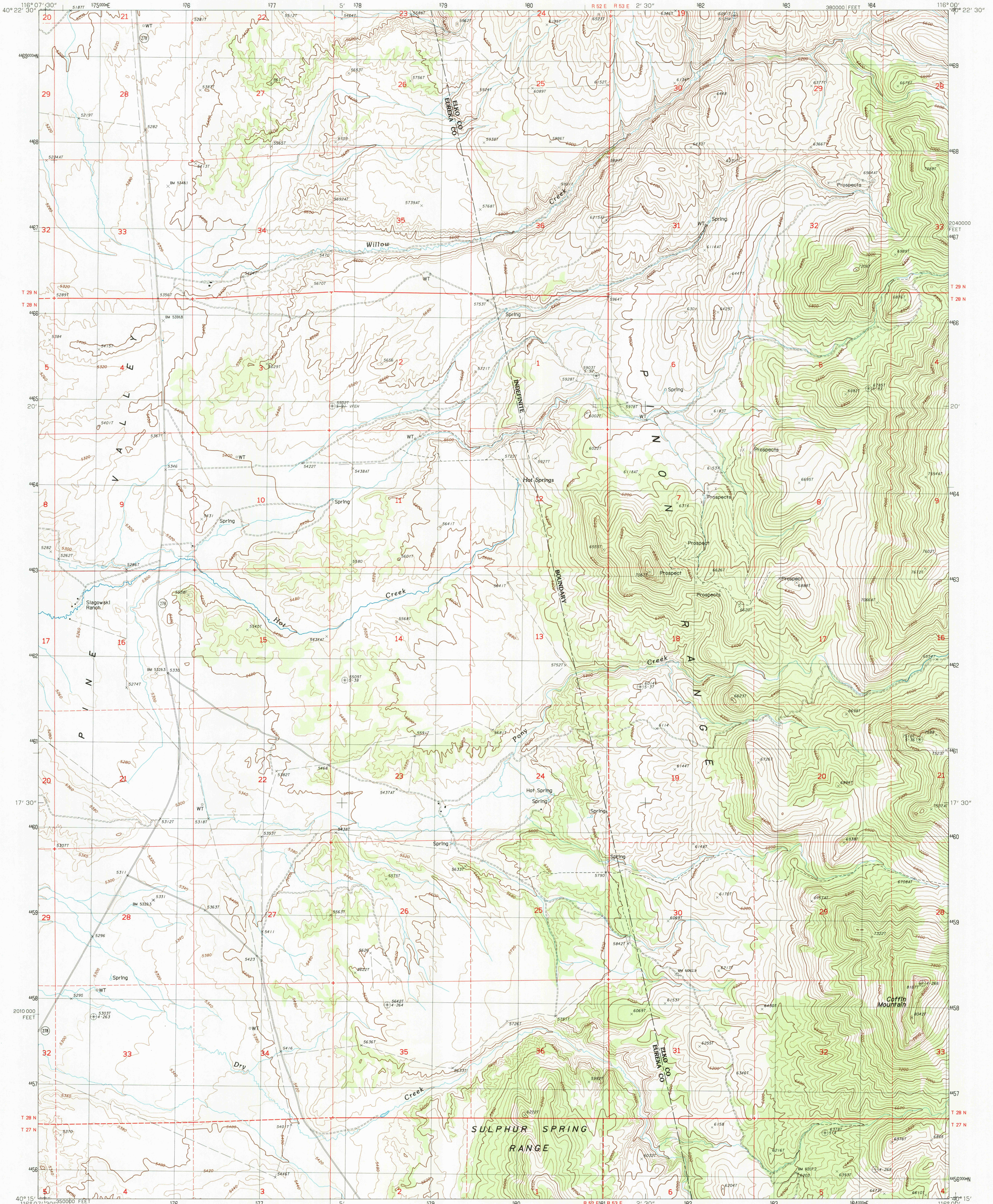


UNITED STATES
DEPARTMENT OF THE INTERIOR
GEOLOGICAL SURVEY

COFFIN MTN QUADRANGLE
NEVADA
7.5 MINUTE SERIES (TOPOGRAPHIC)



PRODUCED BY THE UNITED STATES GEOLOGICAL SURVEY
CONTROL BY: U.S.G.S. AND NOS/NOAA
COMPILED FROM AERIAL PHOTOGRAPHS TAKEN: 1962
FIELD CHECKED: 1985. MAP EDITED: 1985
PROJECTION: TRANSVERSE MERCATOR
GRID: 1000-METER UNIVERSAL TRANSVERSE MERCATOR
GRID: 1000-FOOT STATE GRID TICKS: NEVADA, EAST ZONE
UTM GRID DECLINATION: 16° 00' EAST
1985 MAGNETIC NORTH DECLINATION: 16° 00' EAST
VERTICAL DATUM: NATIONAL GEODETIC VERTICAL DATUM OF 1929
HORIZONTAL DATUM: 1927 NORTH AMERICAN DATUM
To place on the predicted North American Datum of 1983,
move the projection lines as shown by dashed corner ticks
(12 meters north and 77 meters east)
There may be private inholdings within the boundaries of any
Federal and State Reservations shown on this map
No distinction made between houses, barns, and other buildings

PROVISIONAL MAP
Produced from original
manuscript drawings. Infor-
mation shown as of date of
photography.

SCALE 1:24 000
CONTOUR INTERVAL 40 FEET
SUPPLEMENTARY CONTOUR INTERVAL 20 FEET
CONTROL ELEVATIONS SHOWN TO THE NEAREST 0.1 FOOT
OTHER ELEVATIONS SHOWN TO THE NEAREST FOOT
To convert feet to meters multiply by .3048
To convert meters to feet multiply by 3.2808
THIS MAP COMPLIES WITH NATIONAL MAP ACCURACY STANDARDS
FOR SALE BY U.S. GEOLOGICAL SURVEY, DENVER, COLORADO 80225, OR RESTON, VIRGINIA 22092

ROAD LEGEND
Improved Road
Unimproved Road
Trail
Interstate Route
U.S. Route
State Route
COFFIN MTN, NEVADA
PROVISIONAL EDITION 1985
40116-CJ-TF-024

QUADRANGLE LOCATION							
1	2	3	4	5	6	7	8
ADJOINING 7.5 QUADRANGLE NAMES							

NEVADA

USGS NMHD HISTORICAL MAP
AUG 29 1986
REC'D FILE COPY