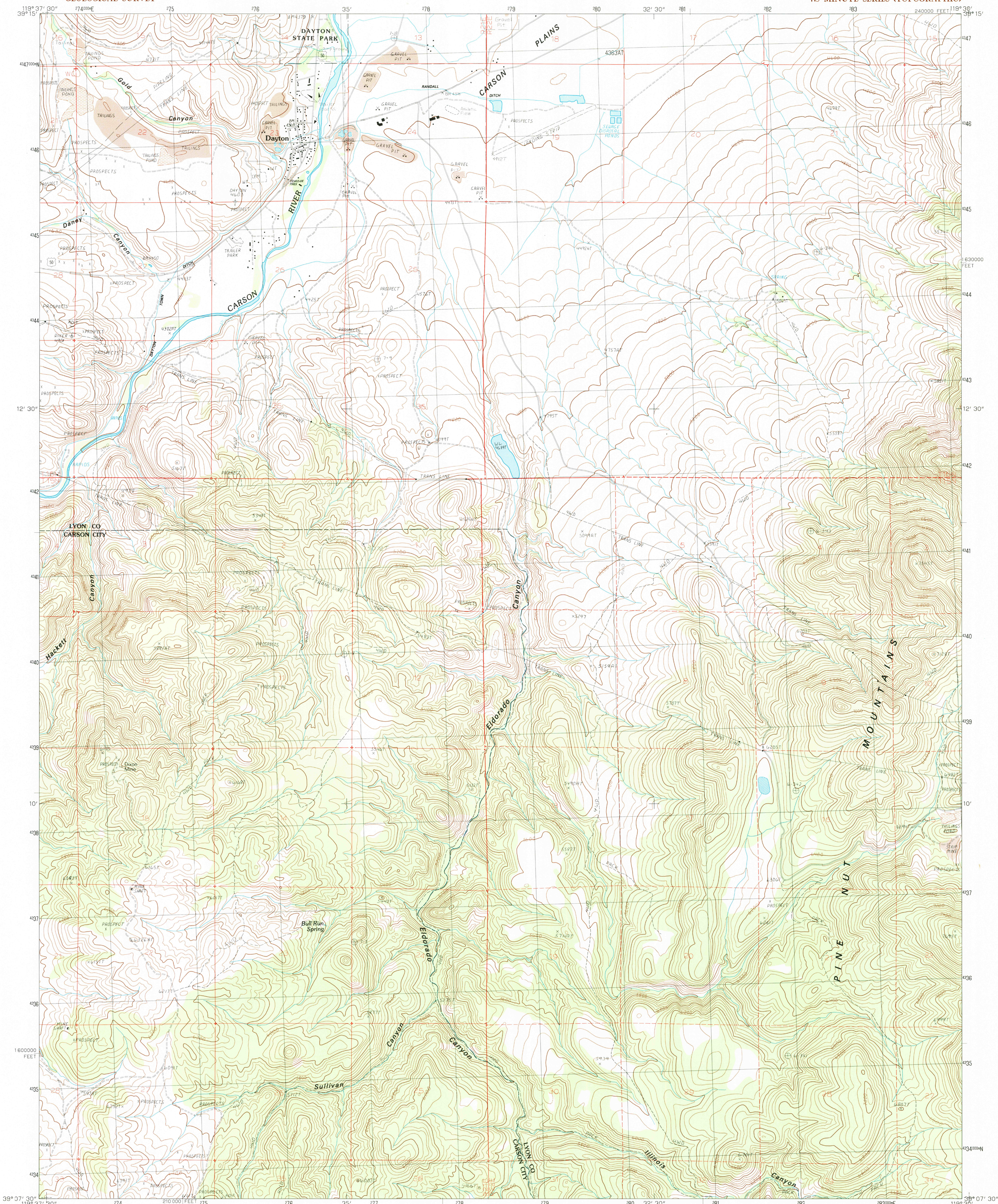


UNITED STATES  
DEPARTMENT OF THE INTERIOR  
GEOLOGICAL SURVEY

DAYTON QUADRANGLE  
NEVADA  
7.5 MINUTE SERIES (TOPOGRAPHIC)



PRODUCED BY THE UNITED STATES GEOLOGICAL SURVEY  
CONTROL BY USGS, NOS/NOAA  
COMPILED FROM AERIAL PHOTOGRAPHS TAKEN 1982  
FIELD CHECKED 1984. MAP EDITED 1987  
PROJECTION TRANSVERSE MERCATOR  
GRID 1000-METER UNIVERSAL TRANSVERSE MERCATOR ZONE 12  
UTM GRID DECLINATION 1927 NORTH AMERICAN DATUM  
1987 MAGNETIC NORTH DECLINATION 16' EAST  
VERTICAL DATUM NATIONAL GEODETIC VERTICAL DATUM OF 1929  
HORIZONTAL DATUM 1927 NORTH AMERICAN DATUM  
To place on the predicted North American Datum of 1983,  
move the projection lines as shown by dashed corner ticks  
(13 meters north and 86 meters east)  
There may be private inholdings within the boundaries of any  
Federal and State Reservations shown on this map  
No distinction made between houses, barns, and other buildings  
Where omitted, land lines have not been established

PROVISIONAL MAP  
Produced from original  
manuscript drawings. Infor-  
mation shown as of date of  
photography. 1

To convert feet to meters multiply by .3048  
To convert meters to feet multiply by 3.2808  
THIS MAP COMPLIES WITH NATIONAL MAP ACCURACY STANDARDS  
FOR SALE BY U.S. GEOLOGICAL SURVEY, DENVER, COLORADO 80225  
OR RESTON, VIRGINIA 22092

1	2	3	Virginia City
4	5	6	Flowerly Peak
7	8	9	Miner's Flat
		10	New Empire
		11	Como
		12	McIntosh Hill
		13	Mineral Peak
		14	Mount Como

ADJOINING 7.5' QUADRANGLE NAMES

ROAD LEGEND  
Improved Road .....  
Unimproved Road .....  
Trail .....  
Interstate Route U.S. Route State Route

DAYTON, NEVADA  
PROVISIONAL EDITION 1987

39119-B5-TF-024