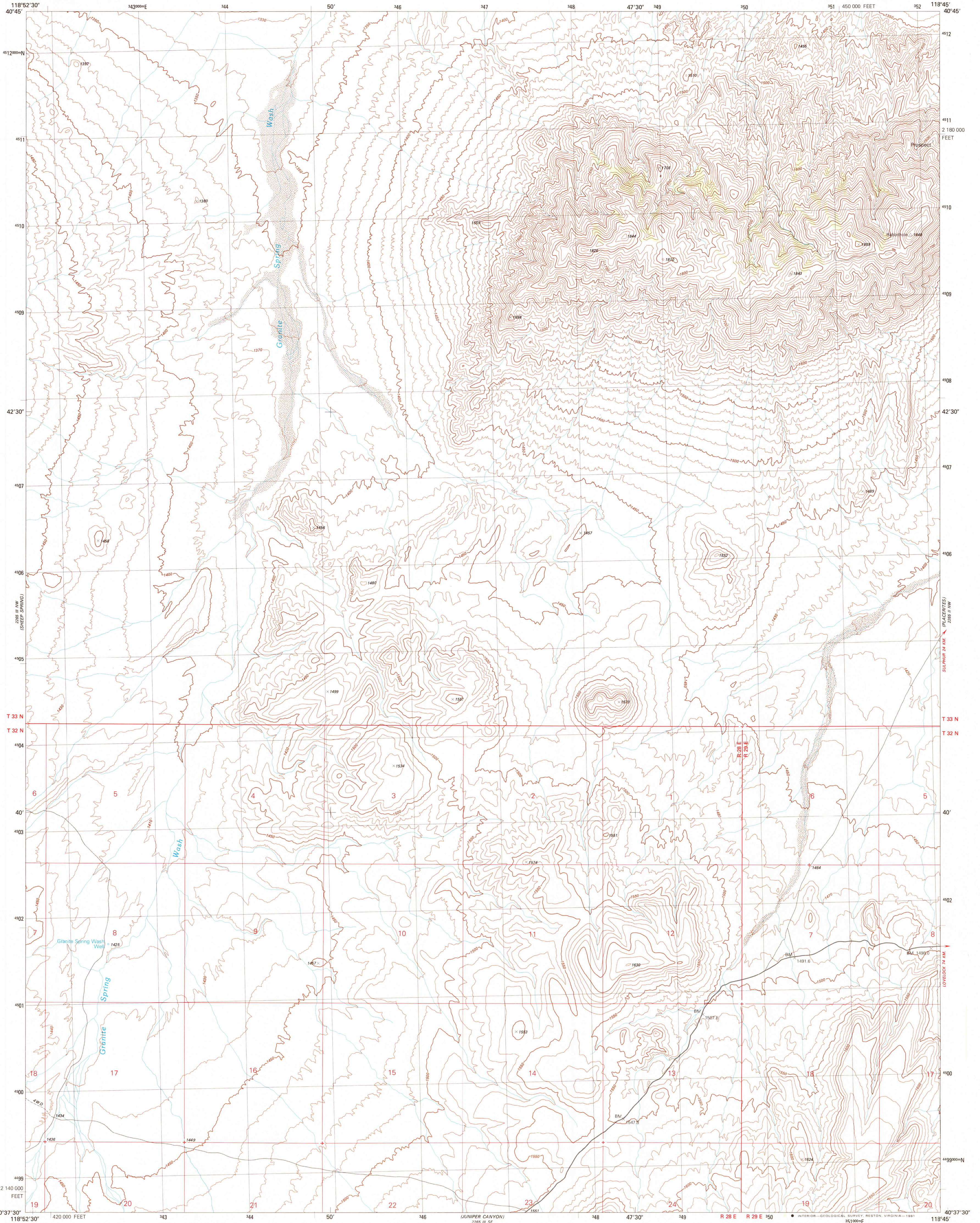


UNITED STATES
DEPARTMENT OF THE INTERIOR
GEOLOGICAL SURVEY

DEAD HORSE CANYON NE QUADRANGLE
NEVADA-PERSHING CO.
7.5 MINUTE SERIES (TOPOGRAPHIC)

268 1 SW
(34 49 16 N)

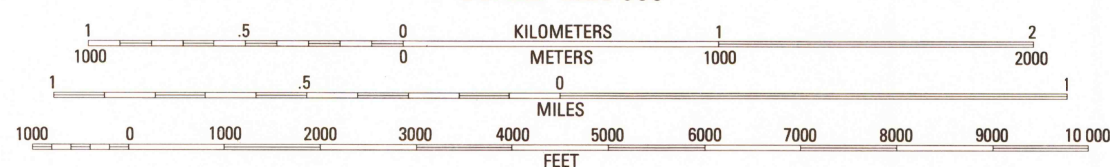
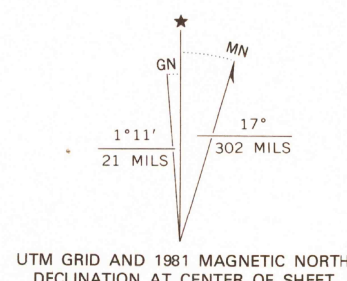


Produced by the United States Geological Survey

Control by USGS and NOS/NOAA

Compiled by photogrammetric methods from aerial
photographs taken 1974. Field checked 1975
Map edited 1981

Projection and 1000-meter grid, zone 11,
Universal Transverse Mercator
10,000-foot grid ticks based on Nevada coordinate
system, west zone. 1927 North American Datum
To place on the predicted North American Datum 1983
move the projection lines 15 meters north and
84 meters east as shown by dashed corner ticks
Where omitted land lines have not been established



CONTOUR INTERVAL 10 METERS
NATIONAL GEODETIC VERTICAL DATUM OF 1929

THIS MAP COMPLIES WITH NATIONAL MAP ACCURACY STANDARDS
FOR SALE BY U. S. GEOLOGICAL SURVEY, DENVER, COLORADO 80225, OR RESTON, VIRGINIA 22092
A FOLDER DESCRIBING TOPOGRAPHIC MAPS AND SYMBOLS IS AVAILABLE ON REQUEST

CONTOURS AND ELEVATIONS
IN METERS

ROAD CLASSIFICATION

Primary highway,
hard surface Light-duty road, hard or
improved surface ...
Secondary highway,
hard surface Unimproved road ...
Interstate Route U. S. Route State Route

DEAD HORSE CANYON NE, NEV.
N4037.5-W11845/7.5

1981

DMA 2265 III NE-SERIES V896

2050
JUL 21 1981
USGS
HISTORICAL FILE
NATIONAL MAPPING DIVISION