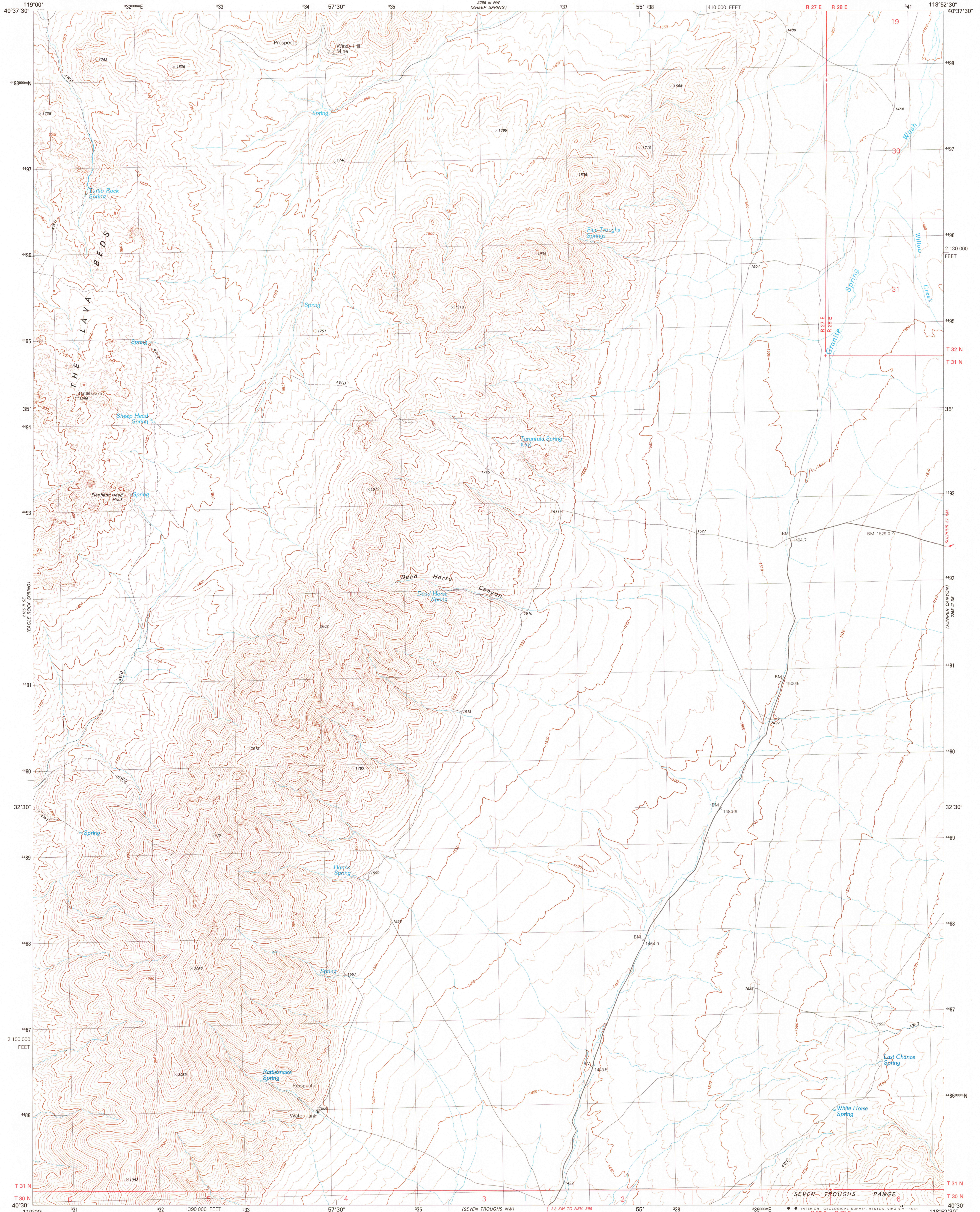
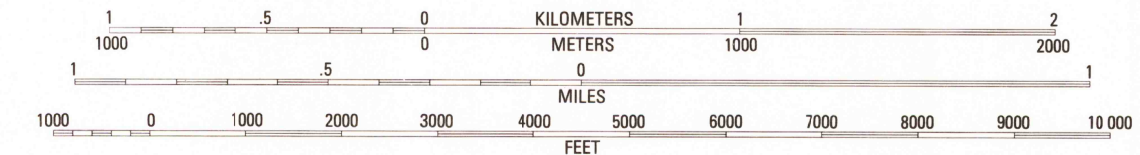
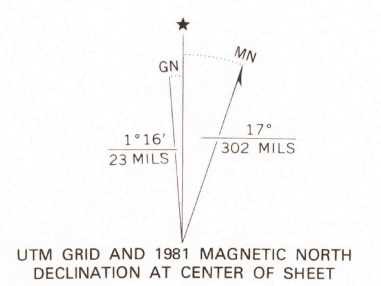


UNITED STATES
DEPARTMENT OF THE INTERIOR
GEOLOGICAL SURVEY

DEAD HORSE CANYON QUADRANGLE
NEVADA-PERSHING CO.
7.5 MINUTE SERIES (TOPOGRAPHIC)



Produced by the United States Geological Survey
Control by USGS and NOS/NOAA
Compiled by photogrammetric methods from aerial photographs taken 1974. Field checked 1975
Map edited 1981
Projection and 1,000-meter grid, zone 11.
Universal Transverse Mercator
10,000-foot grid ticks based on Nevada coordinate system, west zone. 1927 North American Datum
To place on the predicted North American Datum 1983 move the projection lines 15 meters north and 85 meters east as shown by dashed corner ticks
Where omitted, land lines have not been established



CONTOUR INTERVAL 10 METERS
SUPPLEMENTARY CONTOUR INTERVAL 5 METERS
NATIONAL GEODETIC DATUM OF 1929

THIS MAP COMPLIES WITH NATIONAL MAP ACCURACY STANDARDS
FOR SALE BY U. S. GEOLOGICAL SURVEY, DENVER, COLORADO 80225, OR RESTON, VIRGINIA 22092
A FOLDER DESCRIBING TOPOGRAPHIC MAPS AND SYMBOLS IS AVAILABLE ON REQUEST



QUADRANGLE LOCATION
CONTOURS AND ELEVATIONS
IN METERS

ROAD CLASSIFICATION

Primary highway, hard surface	Light-duty road, hard or improved surface
Secondary highway, hard surface	Unimproved road
○ Interstate Route	○ U. S. Route
	○ State Route

DEAD HORSE CANYON, NEV.
N4030-W11852.5/7.5
1981
DMA 2265 III SW-SERIES V896

DEC 1 1981

USGS AND HISTORICAL MAP ARCHIVES
2000