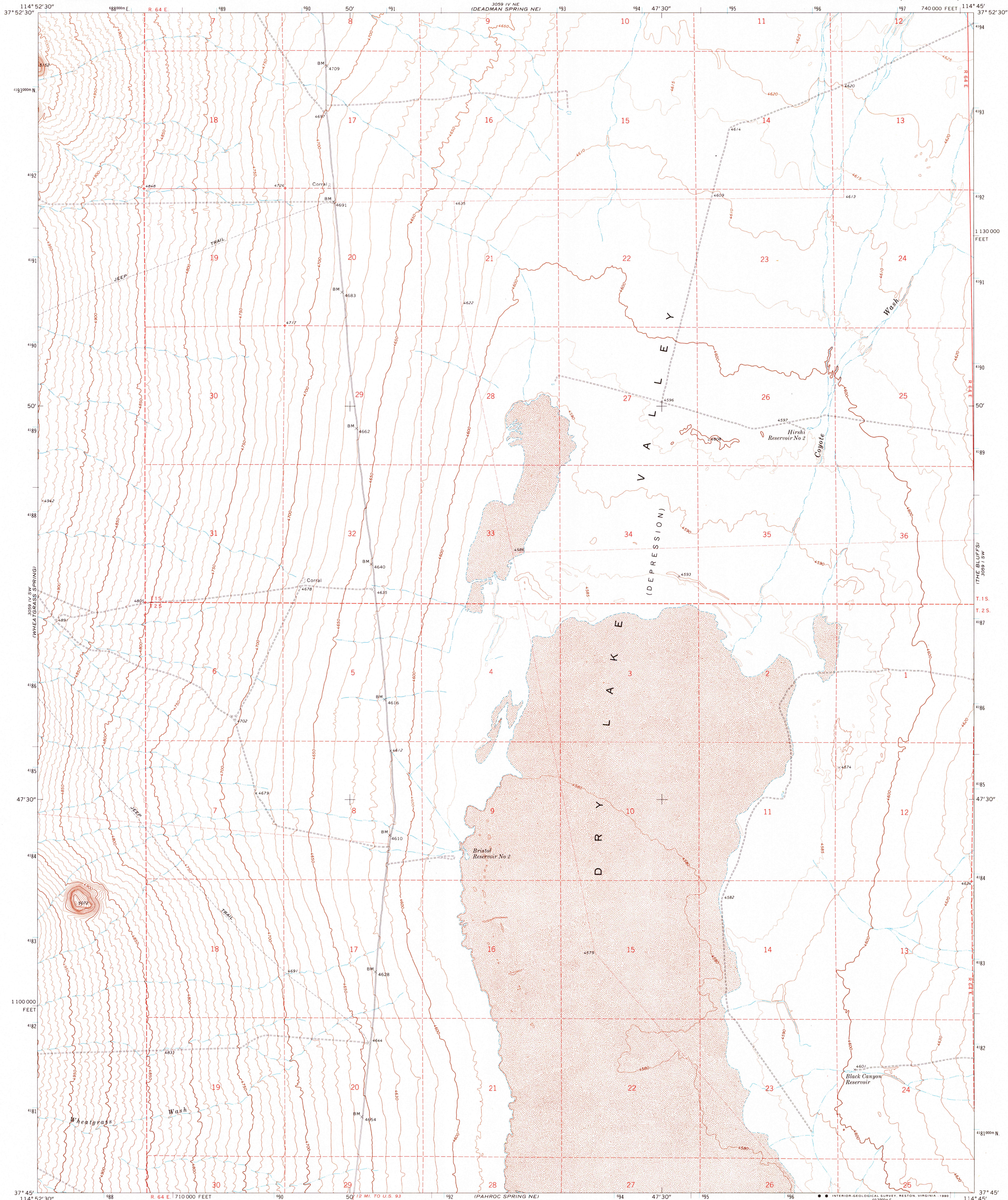


UNITED STATES
DEPARTMENT OF THE INTERIOR
GEOLOGICAL SURVEY

DEADMAN SPRING SE QUADRANGLE
NEVADA—LINCOLN CO.
7.5 MINUTE SERIES (TOPOGRAPHIC)



Mapped, edited, and published by the Geological Survey

Control by USGS and USC&GS

Topography by photogrammetric methods from aerial
photographs taken 1969. Field checked 1970

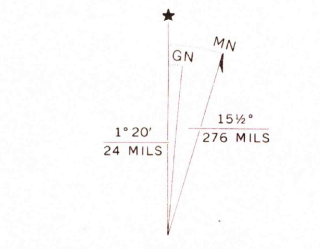
Polyconic projection. 1927 North American datum
10,000-foot grid based on Nevada coordinate system, east zone
1000-meter Universal Transverse Mercator grid ticks,
zone 11, shown in blue

Fine red dashed lines indicate selected fence lines

Where omitted, land lines have not been established

Map photoinspected 1980

No major culture or drainage changes observed



SCALE 1:24 000

CONTOUR INTERVAL 10 FEET

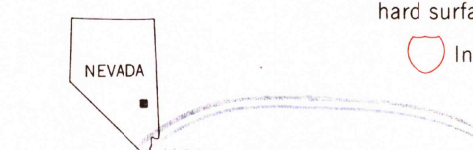
DOTTED LINES REPRESENT 5-FOOT CONTOURS

DATUM IS MEAN SEA LEVEL

THIS MAP COMPLIES WITH NATIONAL MAP ACCURACY STANDARDS
FOR SALE BY U. S. GEOLOGICAL SURVEY, DENVER, COLORADO 80225, OR RESTON, VIRGINIA 22092
A FOLDER DESCRIBING TOPOGRAPHIC MAPS AND SYMBOLS IS AVAILABLE ON REQUEST

ROAD CLASSIFICATION

- Primary highway, hard surface
- Secondary highway, hard surface
- Light-duty road, hard or improved surface
- Unimproved road
- Interstate Route
- U. S. Route
- State Route



DEADMAN SPRING SE, NEV.

N3745—W11445/7.5

1970

PHOTOINSPECTED 1980
AMS 3059 IV SE—SERIES V896

OCT 12 1990

FOU FILE COPY