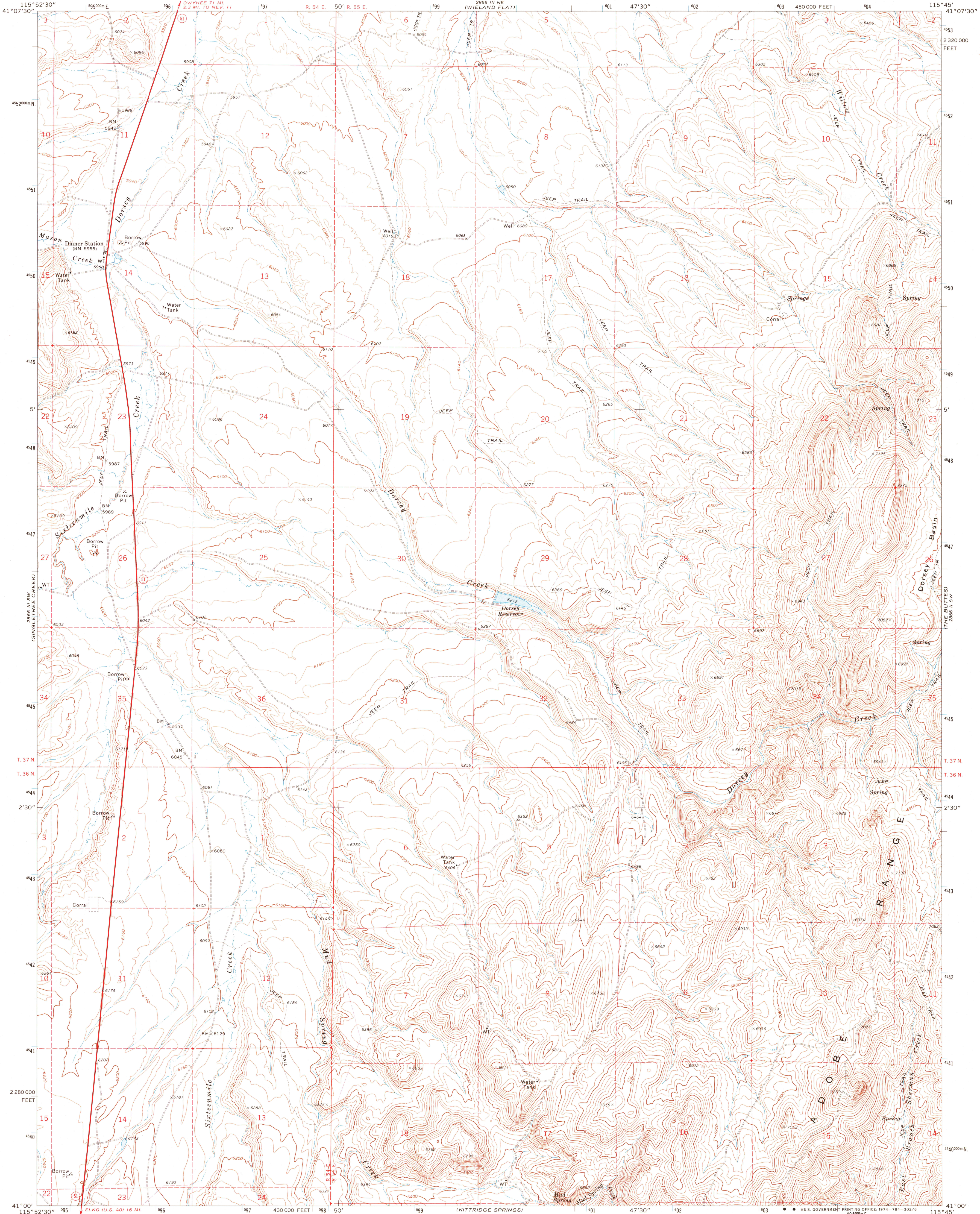
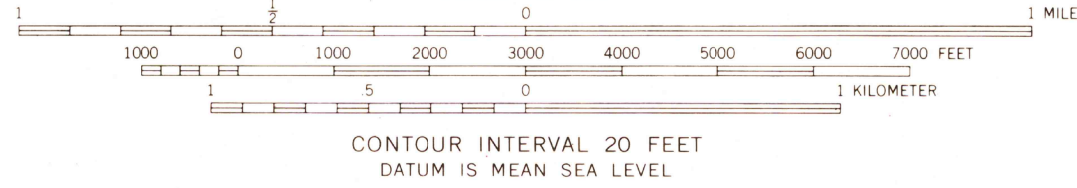
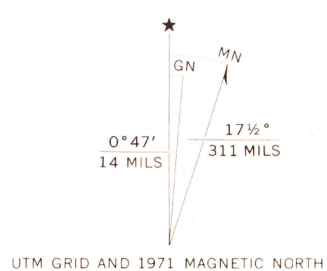


UNITED STATES
DEPARTMENT OF THE INTERIOR
GEOLOGICAL SURVEY

DINNER STATION QUADRANGLE
NEVADA—ELKO CO.
7.5 MINUTE SERIES (TOPOGRAPHIC)



Mapped, edited, and published by the Geological Survey
Control by USGS and USC&GS
Topography by photogrammetric methods from aerial photographs taken 1968. Field checked 1971
Projection and 10,000-foot grid ticks: Nevada coordinate system, east zone (transverse Mercator)
1,000-meter Universal Transverse Mercator grid ticks, zone 11, shown in blue. 1927 North American datum
Fine red dashed lines indicate selected fence lines
Areas covered by dashed light-blue pattern are subject to controlled inundation



ROAD CLASSIFICATION

Primary highway, hard surface	Light duty road, hard or improved surface
Secondary highway, hard surface	Unimproved road
Interstate Route	U. S. Route
	State Route

THIS MAP COMPLIES WITH NATIONAL MAP ACCURACY STANDARDS
FOR SALE BY U. S. GEOLOGICAL SURVEY, DENVER, COLORADO 80225, OR WASHINGTON, D. C. 20242
A FOLDER DESCRIBING TOPOGRAPHIC MAPS AND SYMBOLS IS AVAILABLE ON REQUEST

USGS
HISTORICAL FILE
TOPOGRAPHIC DIVISION

DINNER STATION, NEV.
N4100—W11545/7.5

1971
AMS 2866 III SE—SERIES V886

2550
AUG 26 1974