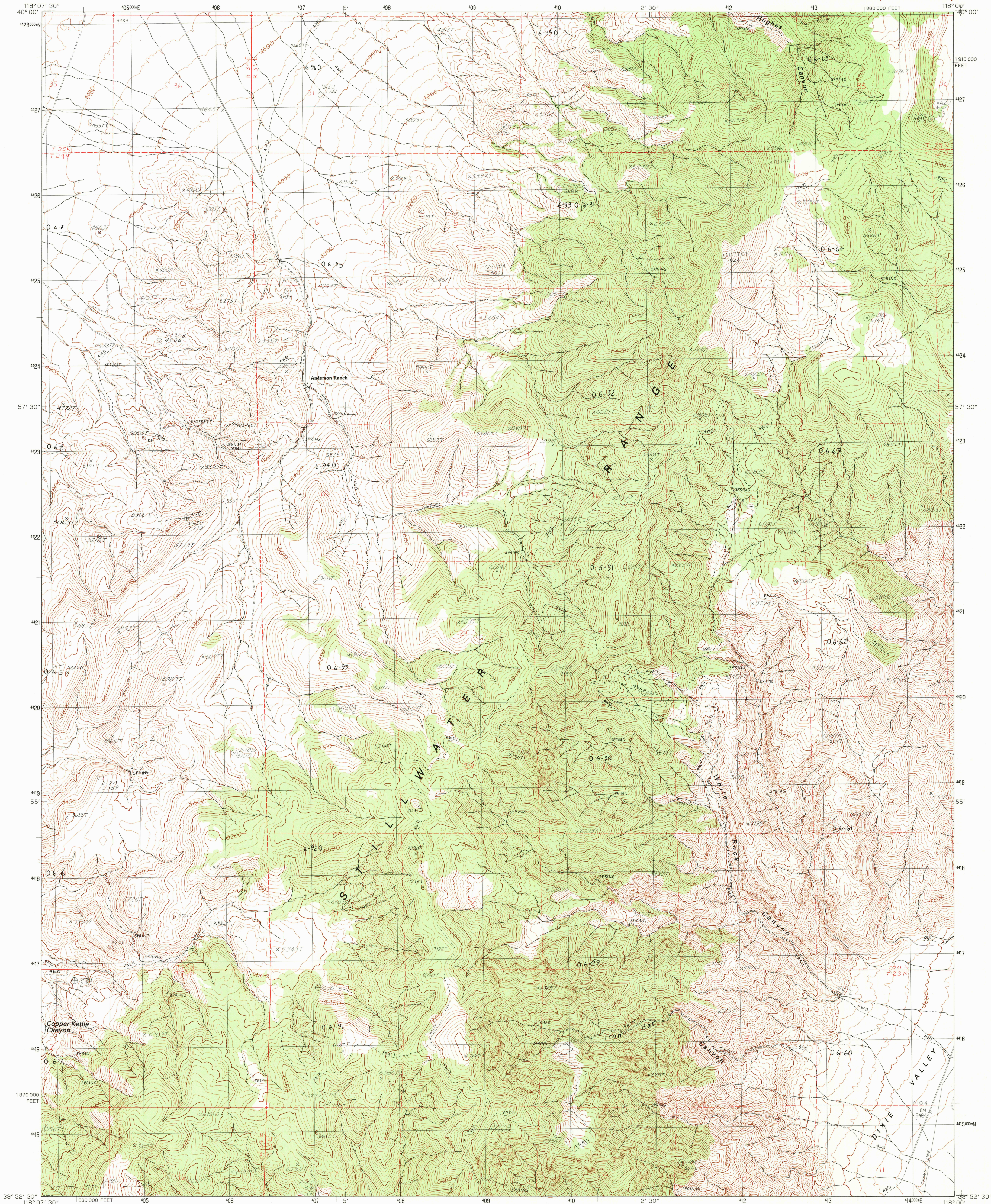


UNITED STATES
DEPARTMENT OF THE INTERIOR
GEOLOGICAL SURVEY

DIXIE HOT SPRINGS NE QUADRANGLE
NEVADA-CHURCHILL CO.
7.5 MINUTE SERIES (TOPOGRAPHIC)



PRODUCED BY THE UNITED STATES GEOLOGICAL SURVEY
CONTROL BY.....USGS AND NOS/NOAA
COMPILED FROM AERIAL PHOTOGRAPHS TAKEN.....1964
REVISED FROM AERIAL PHOTOGRAPHS TAKEN.....1987
FIELD CHECKED.....1988. MAP EDITED.....1990
PROJECTION.....TRANSVERSE MERCATOR
GRID: 1000-METER UNIVERSAL TRANSVERSE MERCATOR.....ZONE 11
10,000-FOOT STATE GRID TICKS.....NEVADA, WEST ZONE
UTM GRID DECLINATION.....0°41' WEST
1990 MAGNETIC NORTH DECLINATION.....15°30' EAST
VERTICAL DATUM.....NATIONAL GEODETIC VERTICAL DATUM OF 1929
HORIZONTAL DATUM.....1927 NORTH AMERICAN DATUM
To place on the predicted North American Datum of 1983,
move the projection lines as shown by dashed corner ticks
(13 meters north and 82 meters east)
There may be private inholdings within the boundaries of any
Federal or State reservations shown on this map
Where omitted, land lines have not been established

PROVISIONAL MAP
Produced from original
manuscript drawings. Infor-
mation shown as of date of
field check.

