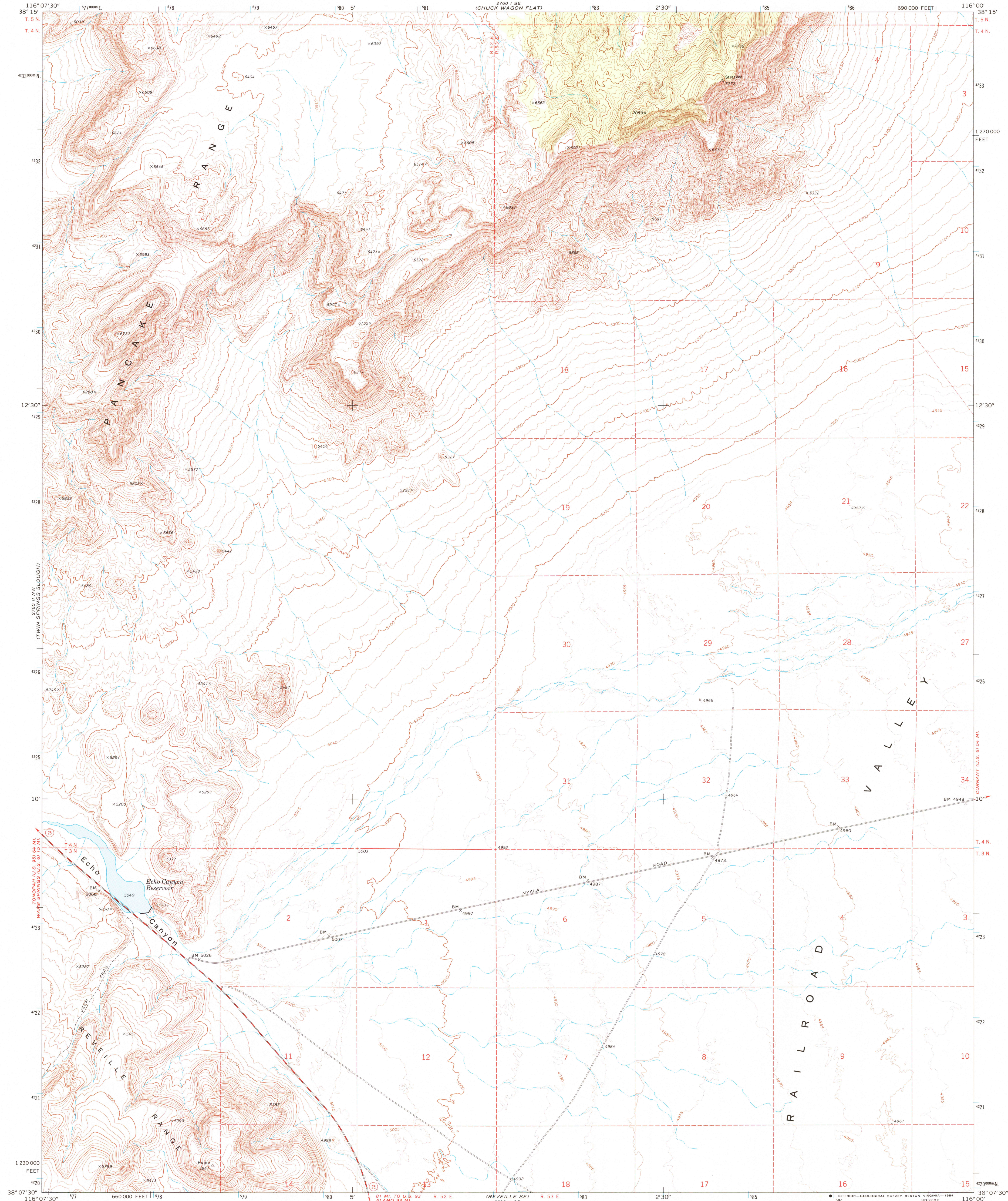
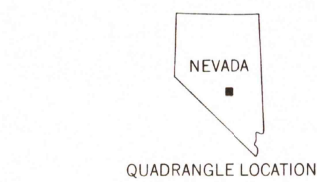
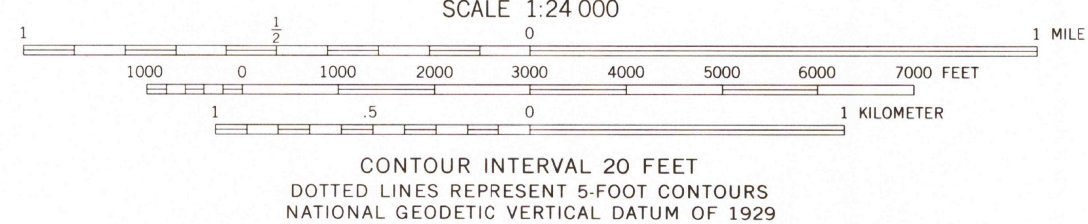
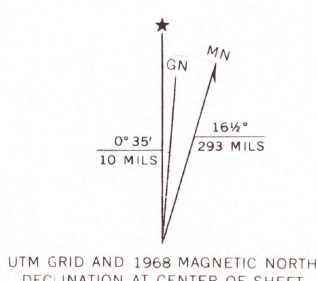


UNITED STATES  
DEPARTMENT OF THE INTERIOR  
GEOLOGICAL SURVEY

ECHO CANYON QUADRANGLE  
NEVADA—Nye CO.  
7.5 MINUTE SERIES (TOPOGRAPHIC)  
NE 1/4 REVELLE 15' QUADRANGLE



Mapped, edited, and published by the Geological Survey  
in cooperation with the Atomic Energy Commission  
Control by USGS and USC&GS  
Topography by photogrammetric methods from aerial  
photographs taken 1967. Field checked 1968  
Polyconic projection. 1927 North American datum  
10,000-foot grid based on Nevada coordinate system, central zone  
1000-meter Universal Transverse Mercator grid ticks,  
zone 11, shown in blue  
To place on the predicted North American Datum 1983  
move the projection lines 10 meters north and  
77 meters east as shown by dashed corner ticks  
Fine red dashed lines indicate selected fence lines  
Where omitted, land lines have not been established



Map photoinspected 1980  
No major culture or drainage changes observed

ROAD CLASSIFICATION  
Primary highway, hard surface  
Secondary highway, hard surface  
Unimproved road  
Light-duty road, hard or improved surface  
Unimproved road  
Interstate Route  
U. S. Route  
State Route

ECHO CANYON, NEV.  
NE 1/4 REVELLE 15' QUADRANGLE  
N3807.5—W11600/7.5  
1968  
PHOTOINSPECTED 1980  
DMA 2760 II NE—SERIES V896

THIS MAP COMPLIES WITH NATIONAL MAP ACCURACY STANDARDS  
FOR SALE BY U. S. GEOLOGICAL SURVEY, DENVER, COLORADO 80225, OR RESTON, VIRGINIA 22092  
A FOLDER DESCRIBING TOPOGRAPHIC MAPS AND SYMBOLS IS AVAILABLE ON REQUEST

RETURN TO:  
USGS AND HISTORICAL MAP ARCHIVES