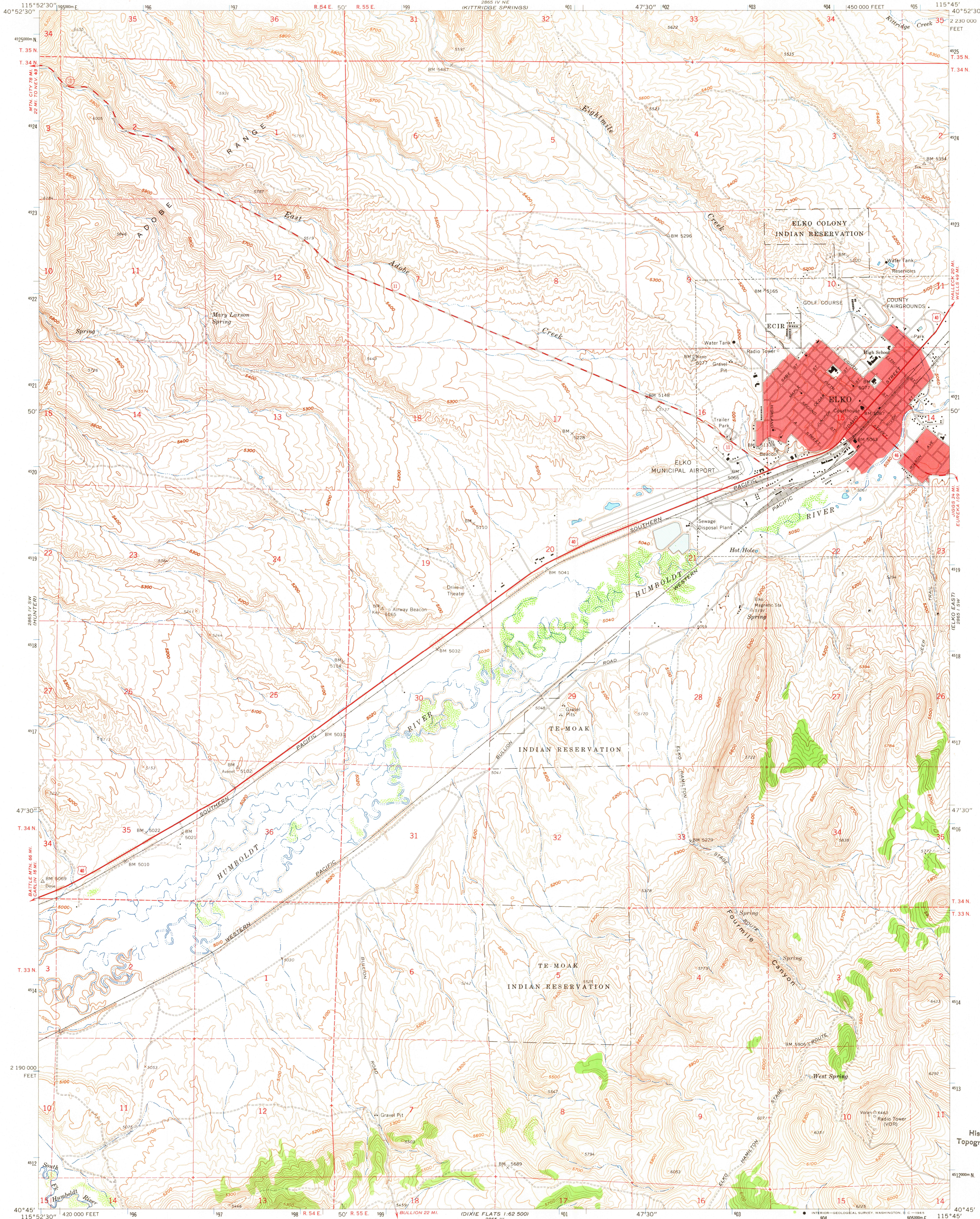
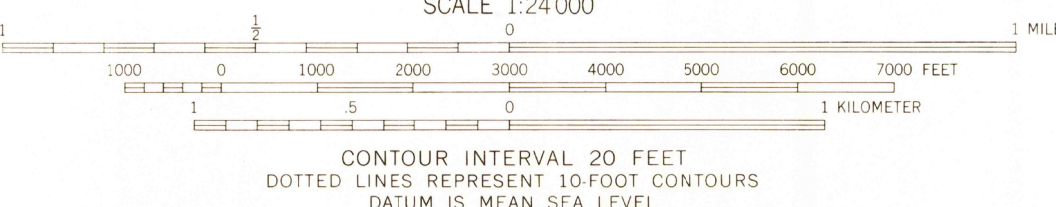
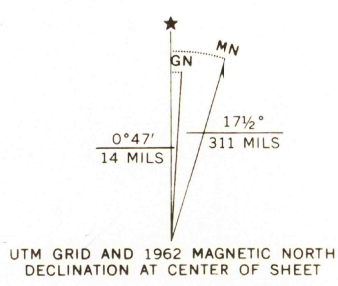


UNITED STATES  
DEPARTMENT OF THE INTERIOR  
GEOLOGICAL SURVEY

ELKO WEST QUADRANGLE  
NEVADA-ELKO CO.  
7.5 MINUTE SERIES (TOPOGRAPHIC)



Mapped, edited, and published by the Geological Survey  
in cooperation with Nevada Bureau of Mines  
Control by USGS and USC&GS  
Topography by photogrammetric methods from aerial photographs  
taken 1955. Field checked 1957. Revised 1962  
Polyconic projection. 1927 North American datum  
10,000-foot grid based on Nevada coordinate system, east zone  
1000-meter Universal Transverse Mercator grid ticks,  
zone 11, shown in blue  
Red tint indicates areas in which only landmark buildings are shown



ROAD CLASSIFICATION	
Heavy-duty	Light-duty
Medium-duty	Unimproved dirt
U. S. Route	State Route

THIS MAP COMPLIES WITH NATIONAL MAP ACCURACY STANDARDS  
FOR SALE BY U. S. GEOLOGICAL SURVEY, DENVER 25, COLORADO OR WASHINGTON 25, D. C.  
A FOLDER DESCRIBING TOPOGRAPHIC MAPS AND SYMBOLS IS AVAILABLE ON REQUEST

U.S.G.S.  
FILE COPY  
TOPOGRAPHIC DIVISION

ELKO WEST, NEV.  
N4045-W11545/7.5  
1962  
AMS 2865 IV SE-SERIES V896

USGS  
Historical File  
Topographic Division

3195  
JAN 2 5 1965