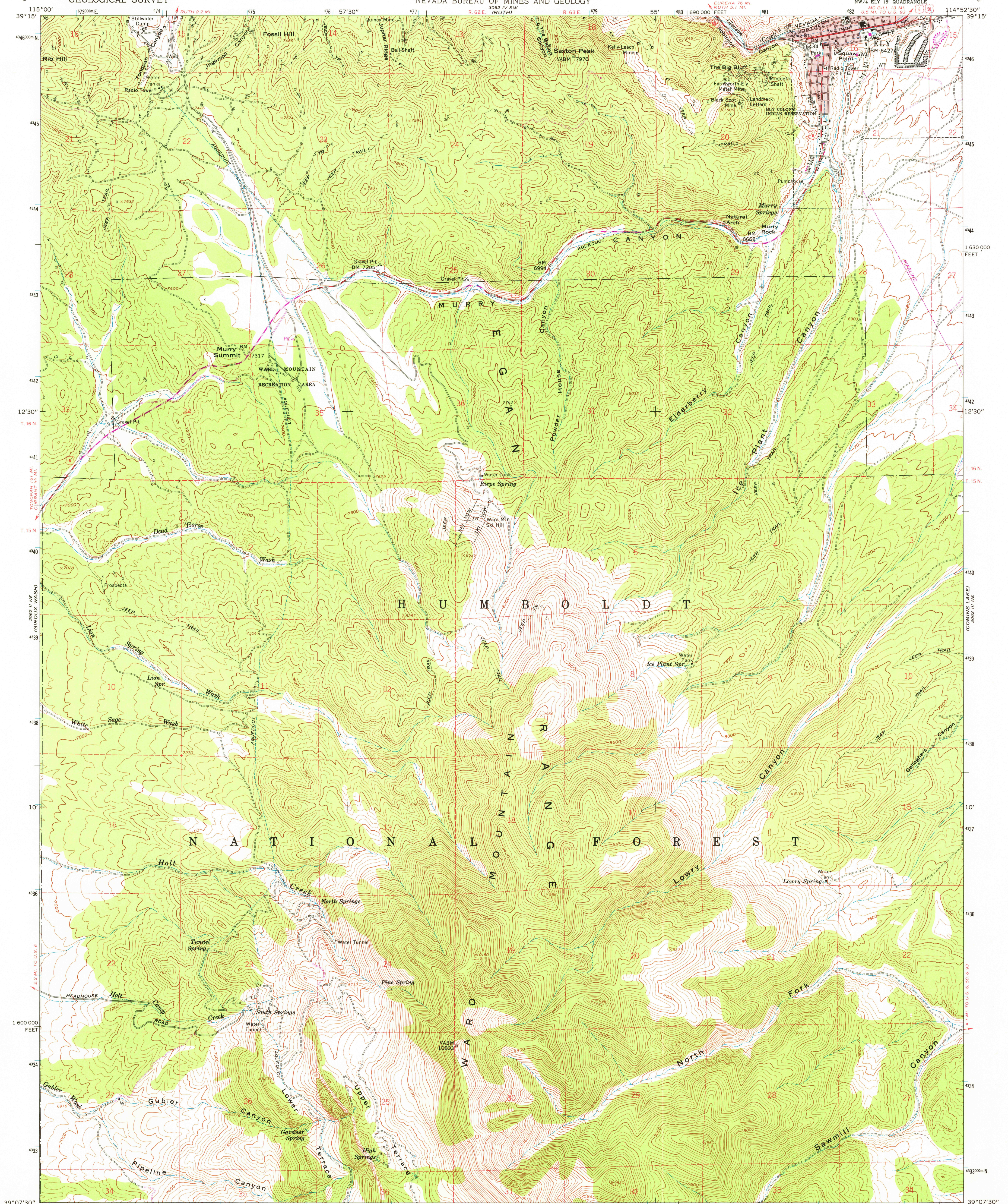




39° 15' SE
(EAST ELY)



Mapped, edited, and published by the Geological Survey
Control by USGS and NOS/NOAA
Topography from aerial photographs by photogrammetric methods
Aerial photographs taken 1956. Field check 1958
Polyconic projection. 1927 North American datum
10,000-foot grid based on Nevada coordinate system, east zone
1000-meter Universal Transverse Mercator grid ticks, zone 11, shown in blue
Red tint indicates area in which only landmark buildings are shown
Dashed land lines indicate approximate locations
There may be private inholdings within the boundaries of the National or State reservations shown on this map

UTM GRID AND 1978 MAGNETIC NORTH DECLINATION AT CENTER OF SHEET

SCALE 1:24,000
CONTOUR INTERVAL 40 FEET
NATIONAL GEODETIC VERTICAL DATUM OF 1929

ROAD CLASSIFICATION
Heavy-duty ——— Light-duty ———
Medium-duty ——— Unimproved dirt ———
U.S. Route

USGS
Historical File
Topographic Division

ELY, NEV.
NW/4 ELY 15' QUADRANGLE
N3907.5—W11452.5/7.5

PHOTOREVISED 1978
AMS 3062 III NW—SERIES V496

APR 10 1978
2250

THIS MAP COMPLIES WITH NATIONAL MAP ACCURACY STANDARDS
FOR SALE BY U. S. GEOLOGICAL SURVEY, DENVER, COLORADO 80225, OR RESTON, VIRGINIA 22092
A FOLDER DESCRIBING TOPOGRAPHIC MAPS AND SYMBOLS IS AVAILABLE ON REQUEST

Revisions shown in purple compiled from aerial photographs taken 1976
This information not field checked. Map edited 1978