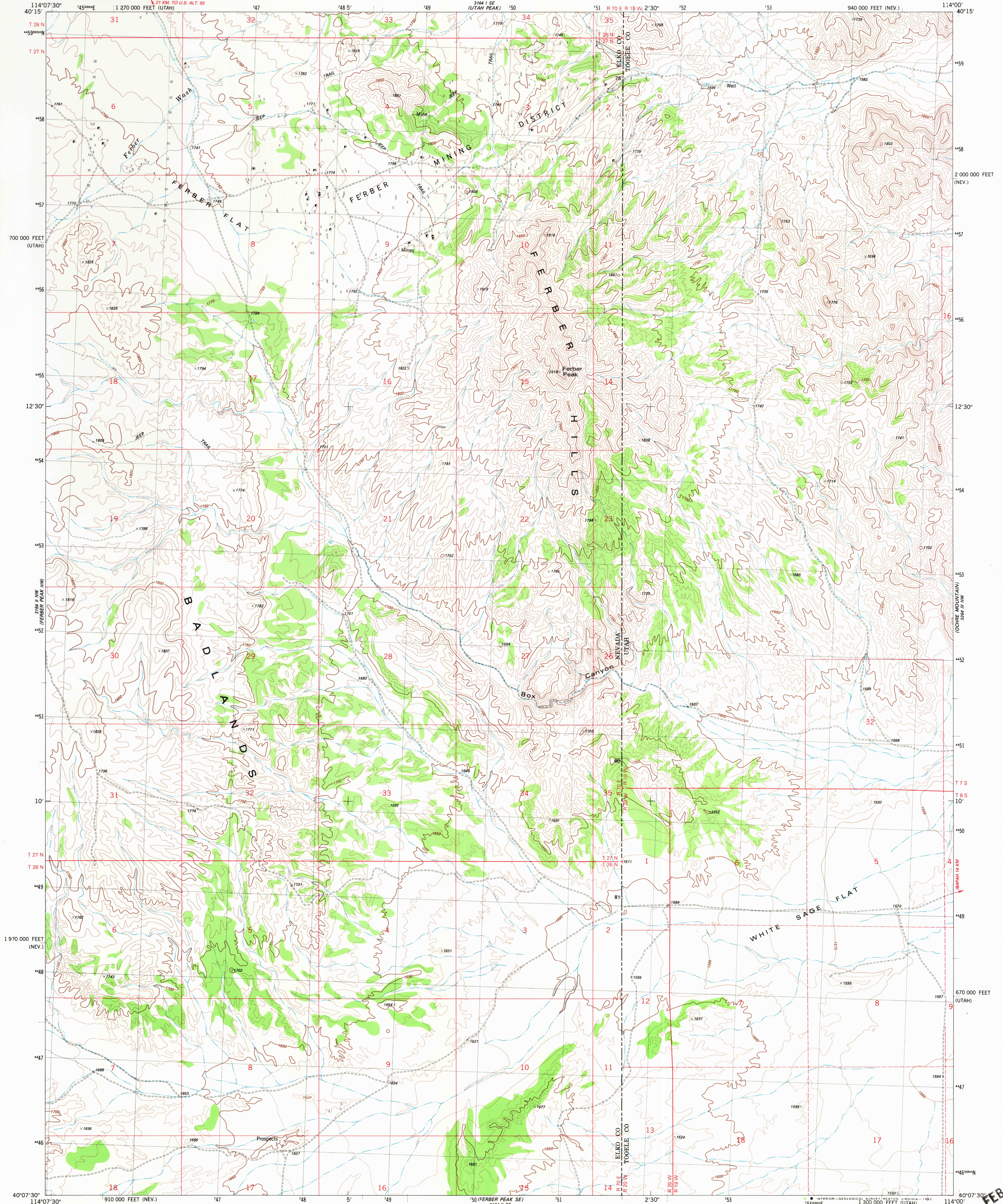


UNITED STATES
DEPARTMENT OF THE INTERIOR
GEOLOGICAL SURVEY

FERBER PEAK QUADRANGLE
NEVADA-UTAH
7.5 MINUTE SERIES (TOPOGRAPHIC)



Mapped, edited, and published by the Geological Survey

Control by USGS and NOS/NOAA

Topography by photogrammetric methods from aerial photographs taken 1979. Field checked 1980. Map edited 1982

Projection: Nevada coordinate system, east zone (transverse Mercator)

10,000-foot grid ticks based on Nevada coordinate system, east zone and Utah coordinate system, central zone

1000-meter Universal Transverse Mercator grid, zone 11

1927 North American datum

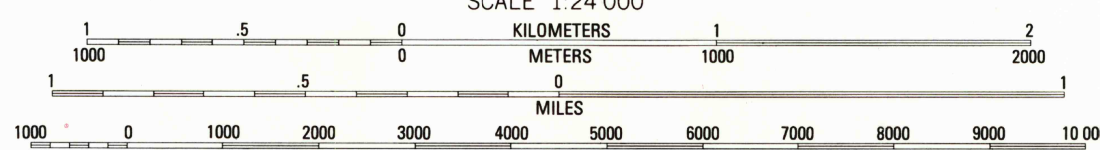
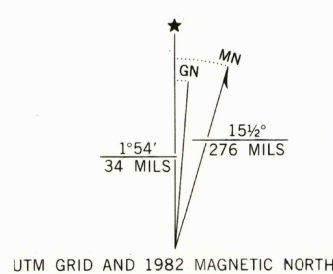
To place on the predicted North American Datum 1983

move the projection lines 10 meters north and

71 meters east as shown by dashed corner ticks

Fine red dashed lines indicate selected fence lines

Where omitted land lines have not been established



CONTOUR INTERVAL 10 METERS
DOTTED LINES REPRESENT 5 METER CONTOURS
NATIONAL GEODETIC VERTICAL DATUM OF 1929

THIS MAP COMPLIES WITH NATIONAL MAP ACCURACY STANDARDS
FOR SALE BY U.S. GEOLOGICAL SURVEY, DENVER, COLORADO 80225, OR RESTON, VIRGINIA 22092
A FOLDER DESCRIBING TOPOGRAPHIC MAPS AND SYMBOLS IS AVAILABLE ON REQUEST



QUADRANGLE LOCATION

ROAD CLASSIFICATION
Primary highway, hard surface
Secondary highway, hard surface
Light-duty road, hard or improved surface
Unimproved road
Interstate Route
U. S. Route
State Route

FERBER PEAK, NEV.-UTAH
N4007.5-W11400.7.5

1982

DMA 3184 II NE-SERIES V896

CONTOURS AND ELEVATIONS IN METERS

FEB 4 - 1983

RETURN TO:
USGS AND HISTORICAL MAP ARCHIVES

25-00