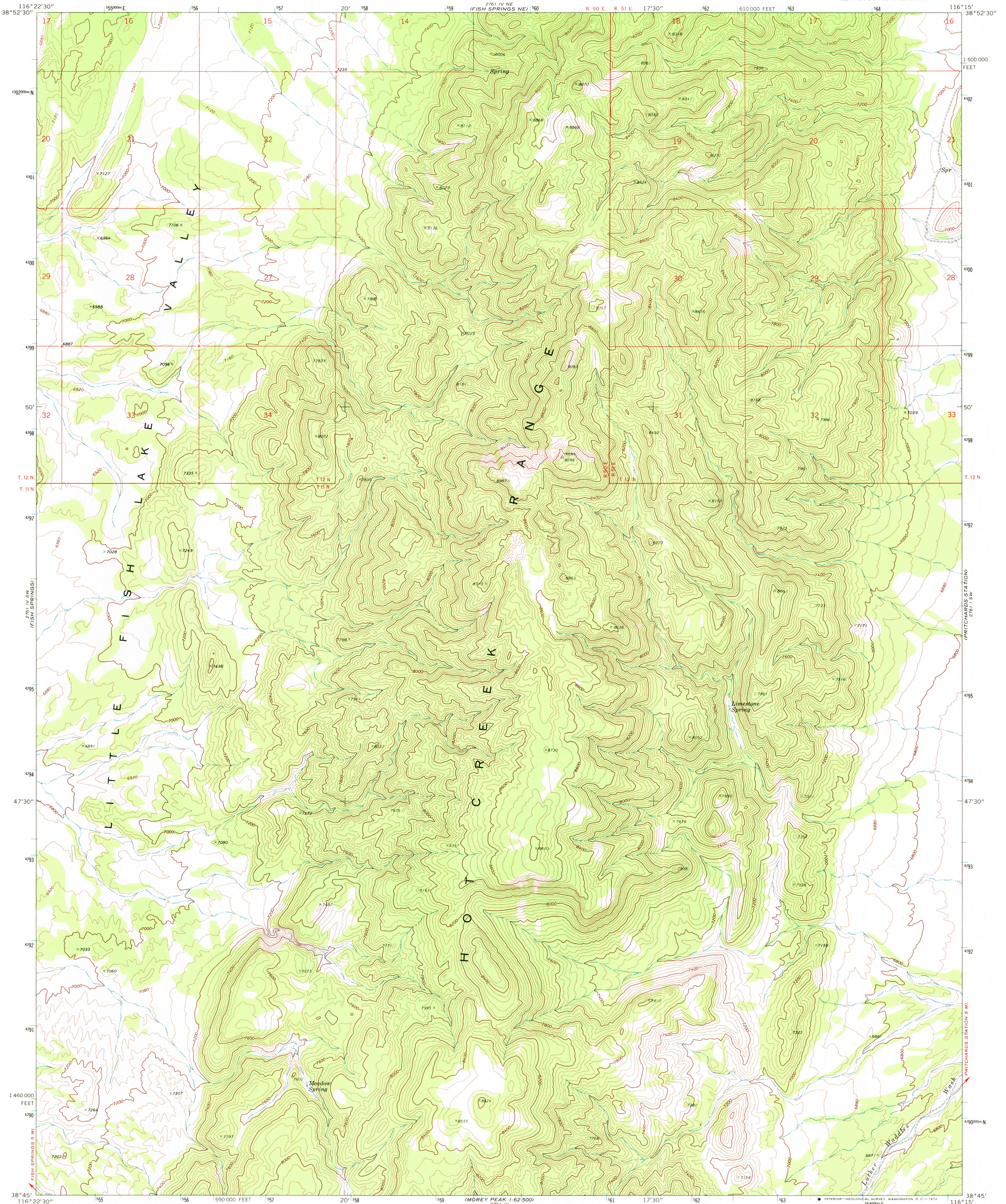
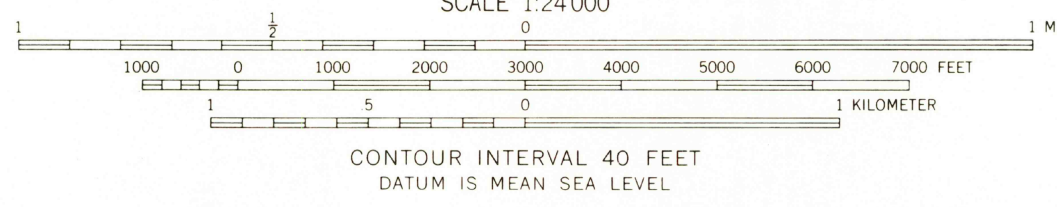
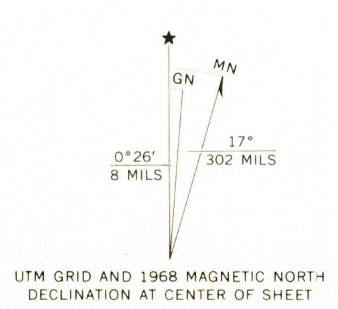


UNITED STATES
DEPARTMENT OF THE INTERIOR
GEOLOGICAL SURVEY

FISH SPRINGS SE QUADRANGLE
NEVADA—NYE CO.
7.5 MINUTE SERIES (TOPOGRAPHIC)
SE/4 FISH SPRINGS 15' QUADRANGLE



Mapped, edited, and published by the Geological Survey in cooperation with the Atomic Energy Commission Control by USGS and USC&GS
Topography by photogrammetric methods from aerial photographs taken 1967. Field checked 1968
Polyconic projection. 1927 North American datum 10,000-foot grid based on Nevada coordinate system, central zone 1000-meter Universal Transverse Mercator grid ticks, zone 11, shown in blue
Where omitted, land lines have not been established



ROAD CLASSIFICATION
Primary highway, hard surface ———— Light-duty road, hard or improved surface ————
Secondary highway, hard surface ———— Unimproved road ————
Interstate Route ———— U. S. Route ———— State Route ————



FISH SPRINGS SE, NEV.
SE/4 FISH SPRINGS 15' QUADRANGLE
N3845—W11615/7.5
1968
AMS 2761 IV SE—SERIES V896

THIS MAP COMPLIES WITH NATIONAL MAP ACCURACY STANDARDS
FOR SALE BY U. S. GEOLOGICAL SURVEY, DENVER, COLORADO 80225, OR WASHINGTON, D. C. 20242
A FOLDER DESCRIBING TOPOGRAPHIC MAPS AND SYMBOLS IS AVAILABLE ON REQUEST

JUN 14 1972
2115
USGS
HISTORICAL FILE
TOPOGRAPHIC DIVISION