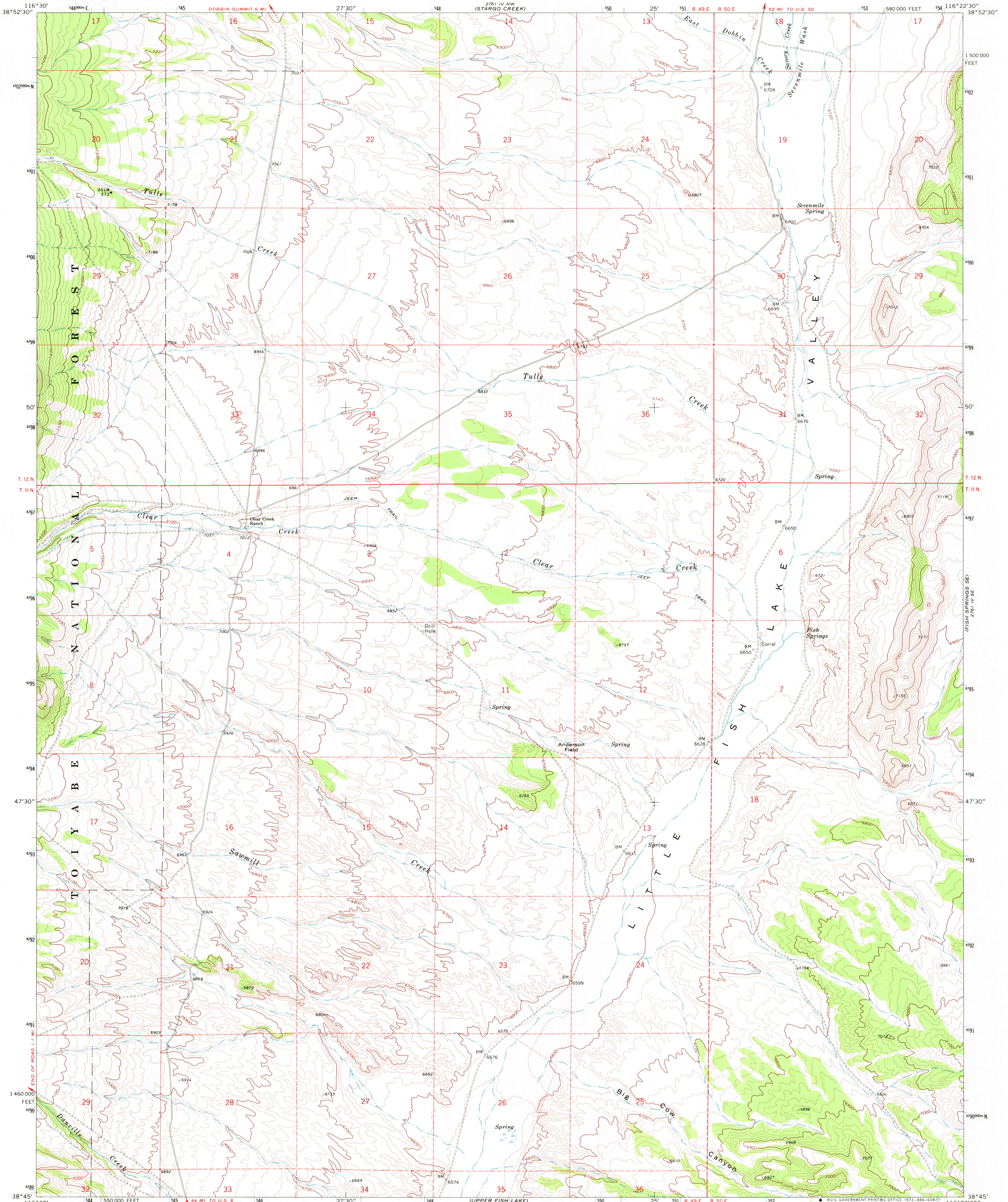


2761 IV NW
FISH SPRINGS NE



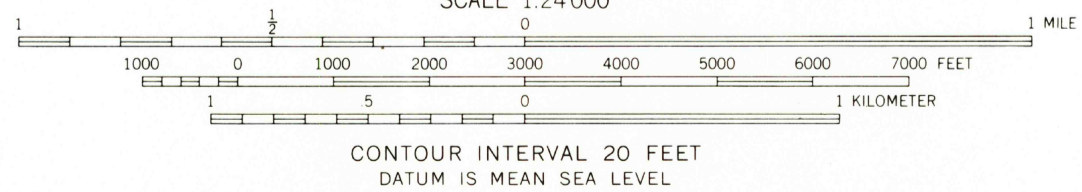
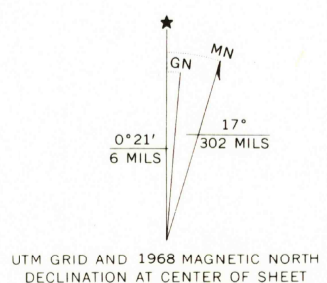
Mapped, edited, and published by the Geological Survey
in cooperation with the Atomic Energy Commission

Control by USGS and USC&GS

Topography by photogrammetric methods from aerial
photographs taken 1967. Field checked 1968

Polyconic projection. 1927 North American datum
10,000-foot grid based on Nevada coordinate system, central zone
1000-meter Universal Transverse Mercator grid ticks,
zone 11, shown in blue

Fine red dashed lines indicate selected fence lines
Where omitted, land lines have not been established



CONTOUR INTERVAL 20 FEET
DATUM IS MEAN SEA LEVEL



QUADRANGLE LOCATION

ROAD CLASSIFICATION

Primary highway, hard surface	Light-duty road, hard or improved surface
Secondary highway, hard surface	Unimproved road
Interstate Route	U. S. Route
	State Route

FISH SPRINGS, NEV.
SW/4 FISH SPRINGS 15' QUADRANGLE
N3845—W11622.5/7.5

1968

AMS 2761 IV SW—SERIES V895

THIS MAP COMPLIES WITH NATIONAL MAP ACCURACY STANDARDS
FOR SALE BY U. S. GEOLOGICAL SURVEY, DENVER, COLORADO 80225, OR WASHINGTON, D. C. 20242
A FOLDER DESCRIBING TOPOGRAPHIC MAPS AND SYMBOLS IS AVAILABLE ON REQUEST

MOOREHEAD
0000001
1972
W11
2500
Sept 1961

USGS
HISTORICAL FILE
TOPOGRAPHIC DIVISION