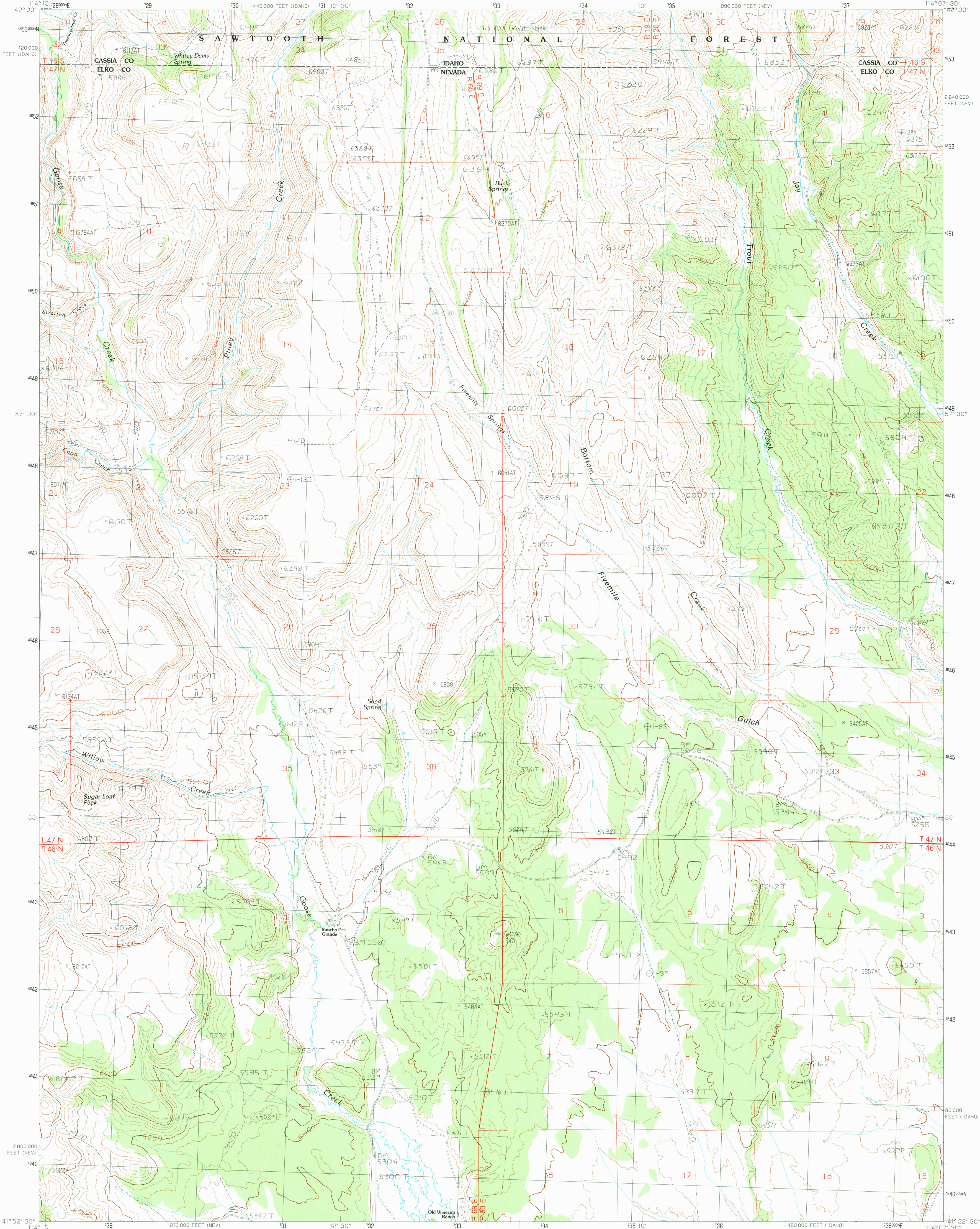


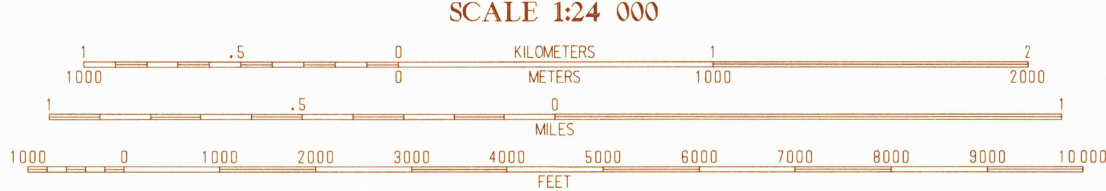
UNITED STATES
DEPARTMENT OF THE INTERIOR
GEOLOGICAL SURVEY

FIVEMILE GULCH QUADRANGLE
NEVADA-IDAHO
7.5 MINUTE SERIES (TOPOGRAPHIC)



PRODUCED BY THE UNITED STATES GEOLOGICAL SURVEY
CONTROL BY USGS, NOS/NOAA
COMPILED FROM AERIAL PHOTOGRAPHS TAKEN 1984
FIELD CHECKED 1986 MAP EDITED 1989
PROJECTION TRANSVERSE MERCATOR
GRID: 1000-METER UNIVERSAL TRANSVERSE MERCATOR ZONE 11
10000-FOOT STATE GRID TICKS NEVADA, EAST ZONE
IDAHO, CENTRAL ZONE
UTM GRID DECLINATION 1°57' EAST
1989 MAGNETIC NORTH DECLINATION 1°30' EAST
VERTICAL DATUM NATIONAL GEODETIC VERTICAL DATUM OF 1929
HORIZONTAL DATUM 1987 NORTH AMERICAN DATUM
To place on the predicted North American Datum of 1983,
move the projection lines as shown by dashed corner ticks
(13 meters north and 72 meters east)
There may be private inholdings within the boundaries of any
Federal and State Reservations shown on this map
Certain land lines are omitted because of insufficient data

PROVISIONAL MAP
Produced from original
manuscript drawings. Infor-
mation shown as of date of
photography.



QUADRANGLE LOCATION							
1	2	3	4	5	6	7	8
1	2	3	4	5	6	7	8
1	2	3	4	5	6	7	8

1 Timber Butte
2 Mahogany Butte
3 Box Peak
4 Stratton Spring
5 Nile Spring
6 Mustang Draw
7 Cedar Mountain Draw
8 Judd Mountain

ADJOINING 7.5' QUADRANGLE NAMES

ROAD LEGEND
Improved Road
Unimproved Road
Trail
Interstate Route U.S. Route State Route

FIVEMILE GULCH, NEV.-IDAHO
PROVISIONAL EDITION 1989

41114-H2-TF-024

THIS MAP COMPLIES WITH NATIONAL MAP ACCURACY STANDARDS
FOR SALE BY U.S. GEOLOGICAL SURVEY, DENVER, COLORADO 80225
OR RESTON, VIRGINIA 22092

