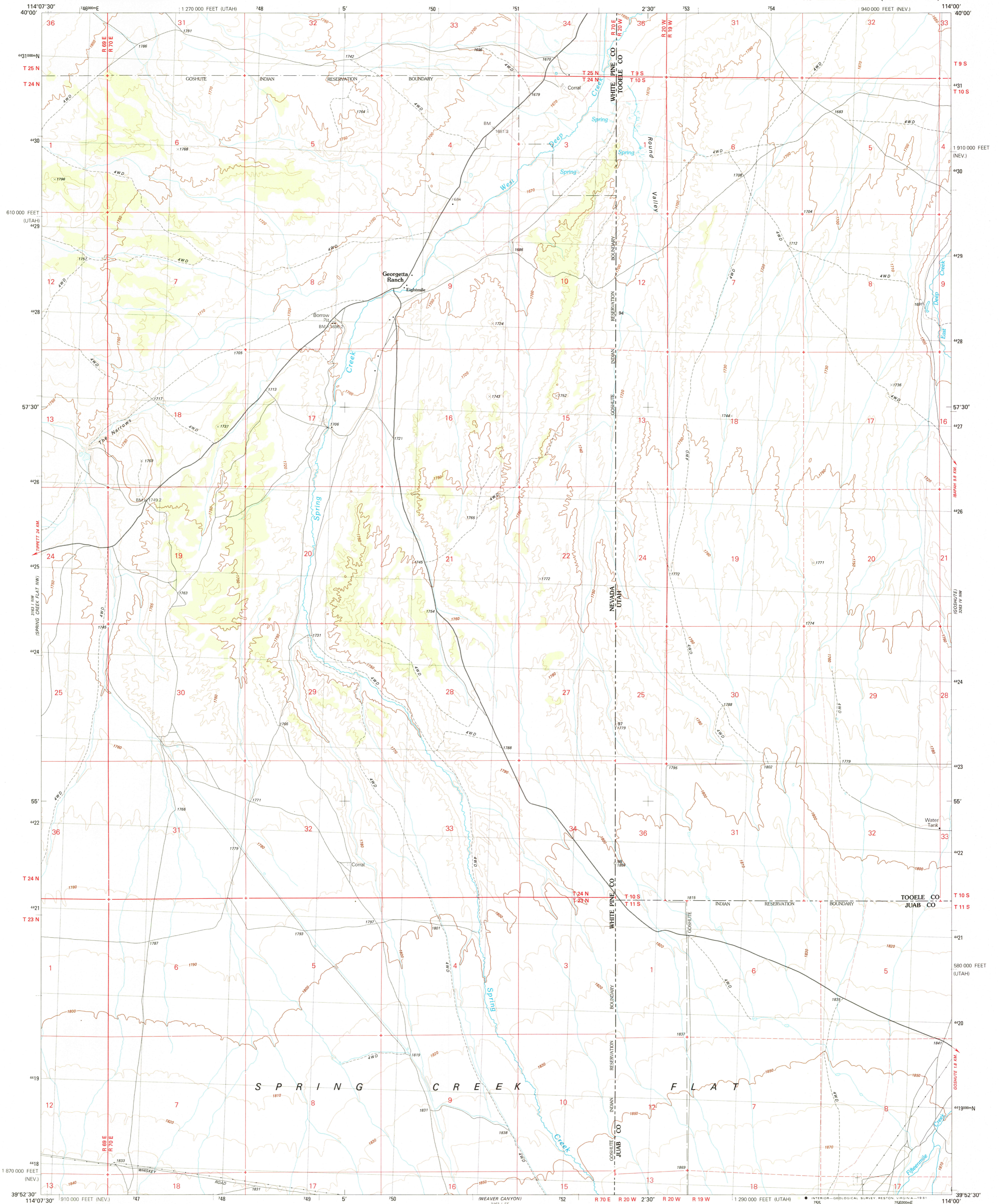


UNITED STATES  
DEPARTMENT OF THE INTERIOR  
GEOLOGICAL SURVEY

GEORGETTA RANCH QUADRANGLE  
NEVADA-UTAH  
7.5 MINUTE SERIES (TOPOGRAPHIC)

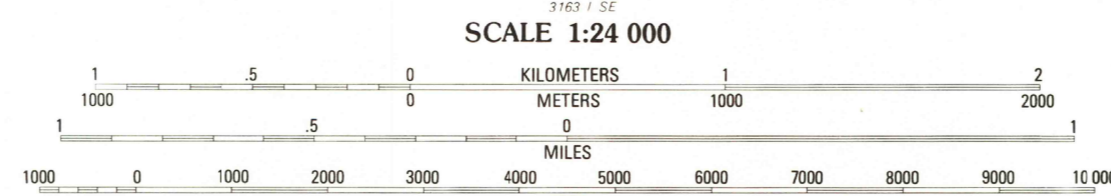
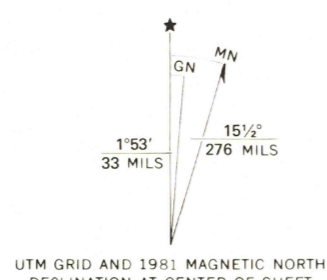


Produced by the United States Geological Survey

Control by USGS and NOS/NOAA  
Compiled by photogrammetric methods from aerial photographs taken 1977. Field checked 1978.  
Map edited 1981

Projection and 1000-meter grid, zone 11:  
Universal Transverse Mercator  
10,000-foot grid ticks based on Nevada coordinate system, east zone and Utah coordinate system, central zone  
1927 North American Datum

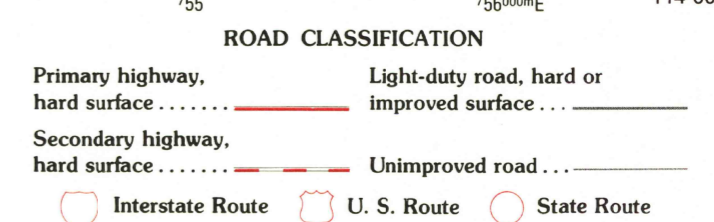
To place on the predicted North American Datum 1983 move the projection lines 10 meters north and 71 meters east as shown by dashed corner ticks  
There may be private inholdings within the boundaries of the National or State reservations shown on this map



CONTOUR INTERVAL 10 METERS  
SUPPLEMENTARY CONTOUR INTERVAL 5 METERS  
NATIONAL GEODETIC VERTICAL DATUM OF 1929

THIS MAP COMPLIES WITH NATIONAL MAP ACCURACY STANDARDS  
FOR SALE BY U. S. GEOLOGICAL SURVEY, DENVER, COLORADO 80225, OR RESTON, VIRGINIA 22092  
A FOLDER DESCRIBING TOPOGRAPHIC MAPS AND SYMBOLS IS AVAILABLE ON REQUEST

CONTOURS AND ELEVATIONS  
IN METERS



QUADRANGLE LOCATION

GEORGETTA RANCH, NEV.-UTAH  
N3952.5-W11400/7.5

1981

DMA 3163 1 N-SERIES V896

RETURN TO:  
USGS AND HISTORICAL MAP ARCHIVES

1980