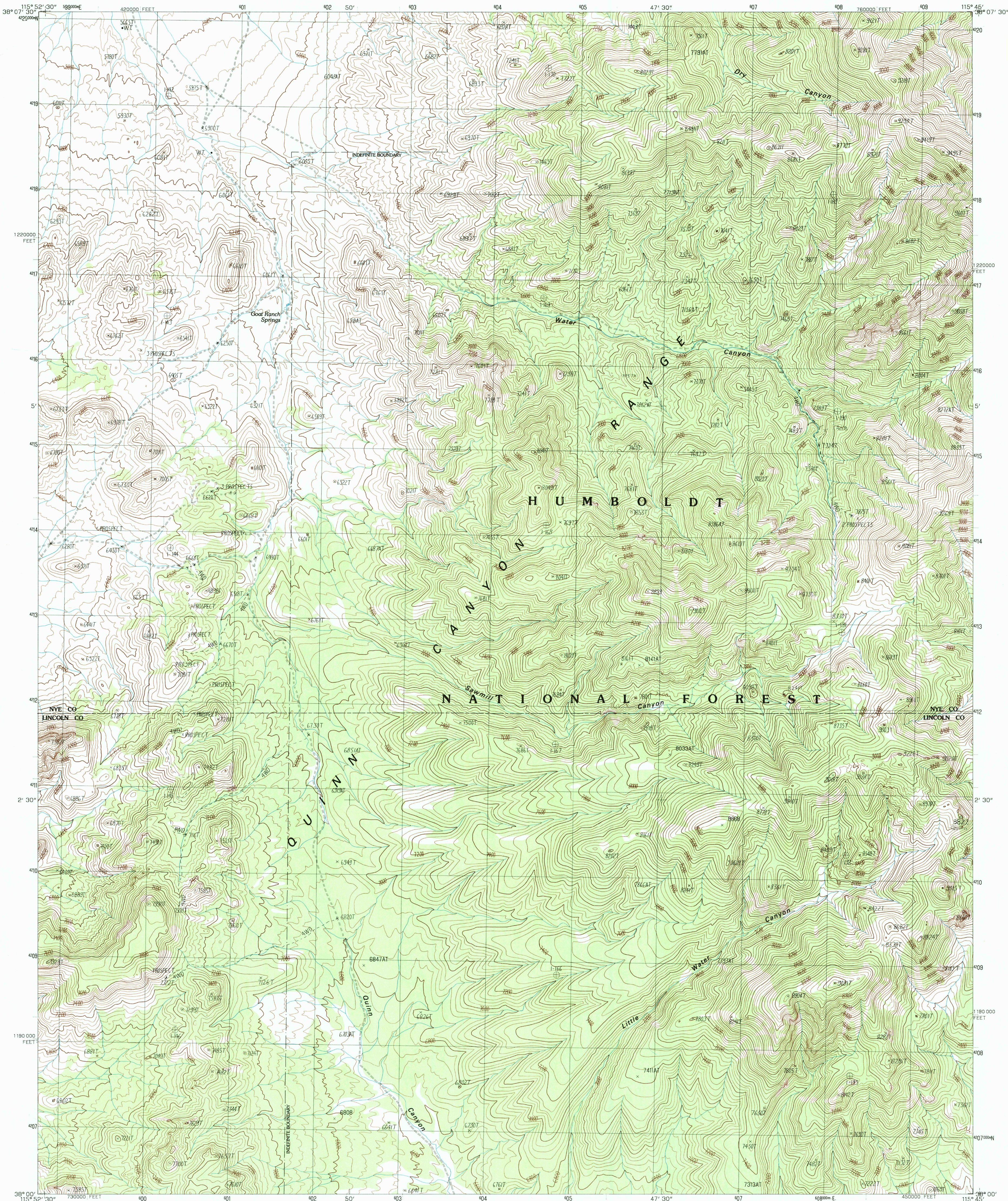


UNITED STATES
DEPARTMENT OF THE INTERIOR
GEOLOGICAL SURVEY

GOAT RANCH SPRINGS QUADRANGLE
NEVADA
7.5 MINUTE SERIES (TOPOGRAPHIC)



PRODUCED BY THE UNITED STATES GEOLOGICAL SURVEY
CONTROL BY: USGS, NOS/NOAA AND USFS
COMPILED FROM AERIAL PHOTOGRAPHS TAKEN: 1980
FIELD CHECKED: 1981 MAP EDITED: 1985
PROJECTION: TRANSVERSE MERCATOR
GRID: 100-METER UNIVERSAL TRANSVERSE MERCATOR ZONE 12
100,000-METER STATE GRID TICS NEVADA, CENTRAL ZONE
AND EAST ZONE
UTM GRID DECLINATION: 0°44' EAST
1985 MAGNETIC NORTH DECLINATION: 15° EAST
VERTICAL DATUM: NATIONAL GEODETIC VERTICAL DATUM OF 1929
HORIZONTAL DATUM: 1927 NORTH AMERICAN DATUM
To place on the predicated North American Datum of 1983,
move the projection lines as shown by dashed corner ticks
(9 meters north and 76 meters east)
There may be private inholdings within the boundaries of any
Federal and State Reservations shown on this map
All marginal data and lettering generated and positioned by
automated type placement procedures
Land lines have not been established or are not shown because
of insufficient data

PROVISIONAL MAP
Produced from original
manuscript drawings. Infor-
mation shown as of date of
field check. 2

THIS MAP COMPLIES WITH NATIONAL MAP ACCURACY STANDARDS
FOR SALE BY U.S. GEOLOGICAL SURVEY, DENVER, COLORADO 80225
OR RESTON, VIRGINIA 22092

1	2	3	1
4	5	6	2
7	8	9	3

ADJOINING 7.5' QUADRANGLE NAMES

ROAD LEGEND
Improved Road
Unimproved Road
Trail
Interstate Route
U.S. Route
State Route

GOAT RANCH SPRINGS, NEVADA
PROVISIONAL EDITION 1985

38115-A7-TF-024

REC'D FILE COPY
MAR 28 1986

U.S. GEOLOGICAL SURVEY