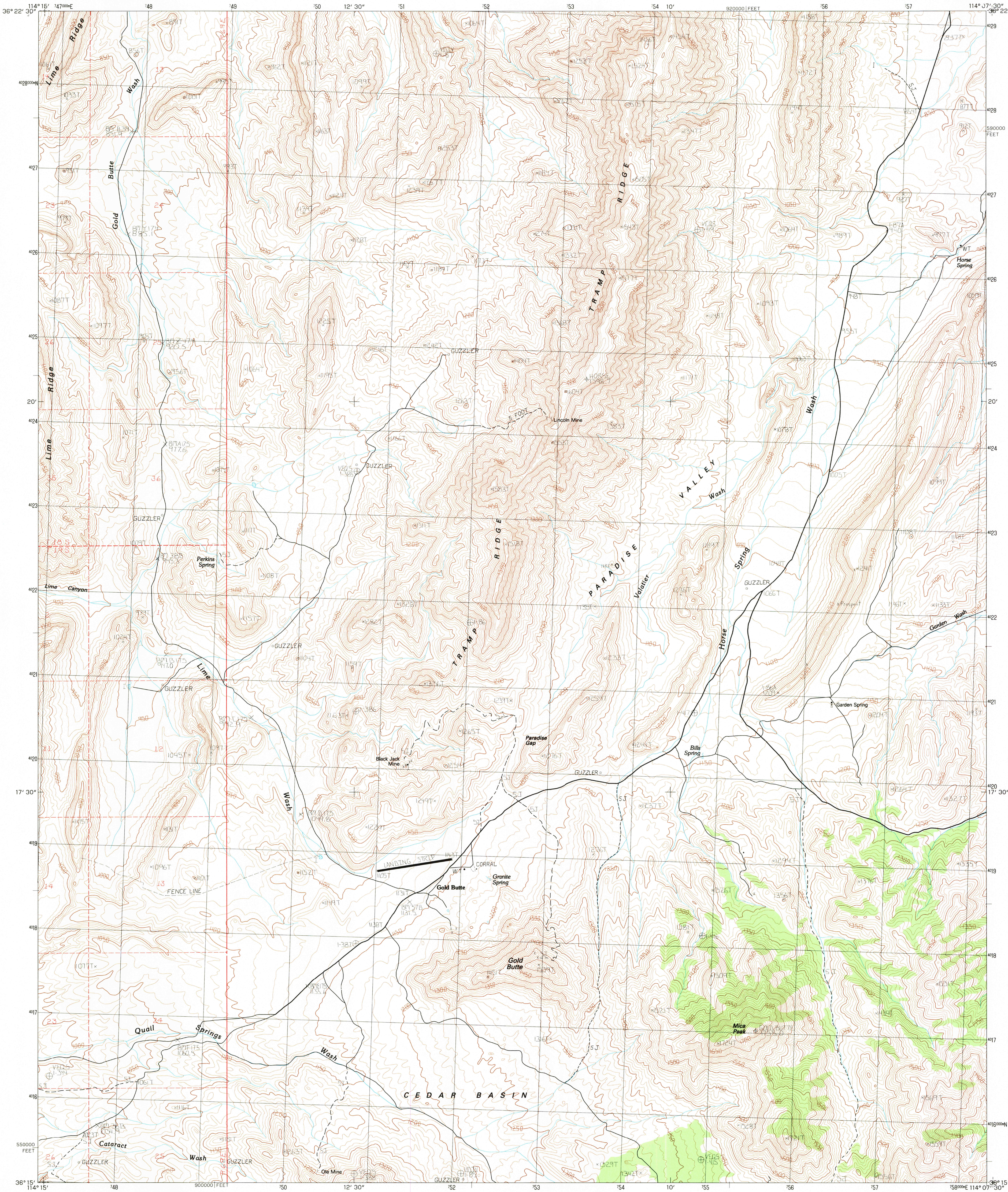


UNITED STATES
DEPARTMENT OF THE INTERIOR
GEOLOGICAL SURVEY

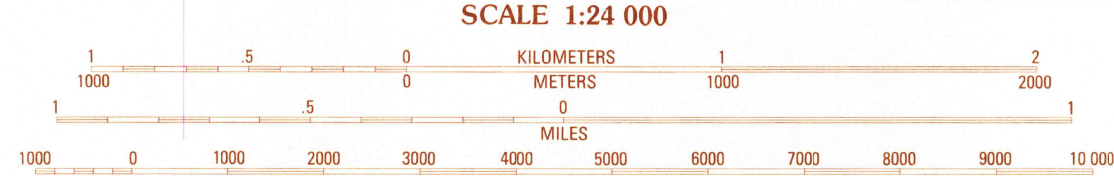
GOLD BUTTE QUADRANGLE
NEVADA—CLARK CO.
7.5 MINUTE SERIES (TOPOGRAPHIC)



PRODUCED BY THE UNITED STATES GEOLOGICAL SURVEY
CONTROL BY THE UNITED STATES GEOLOGICAL SURVEY
COMPILED FROM AERIAL PHOTOGRAPHS TAKEN 1973, 1978
FIELD CHECKED MAP EDITED 1982, MAP EDITED 1984
PROJECTION UNIVERSAL TRANSVERSE MERCATOR
GRID: 1000-METER UNIVERSAL TRANSVERSE MERCATOR ZONE 11
10,000-FOOT STATE GRID TICS NEVADA, EAST ZONE
UTM GRID DECLINATION 1°40' EAST
1980 MAGNETIC NORTH DECLINATION 1°40' EAST
VERTICAL DATUM, NATIONAL GEODETIC VERTICAL DATUM OF 1929
HORIZONTAL DATUM 1927 NORTH AMERICAN DATUM
To place on the predicted North American Datum of 1983,
move the projection lines as shown by dashed corner ticks
(.5 meters north / .72 meters east)
There may be private inholdings within the boundaries of any
Federal and State Reservations shown on this map
Where omitted, land lines have not been established

PROVISIONAL MAP
Produced from original
manuscript drawings. Infor-
mation shown as of date of
field check.

3



CONTOUR INTERVAL 10 METERS
CONTROL ELEVATIONS SHOWN TO THE NEAREST 0.1 METER
OTHER ELEVATIONS SHOWN TO THE NEAREST METER
To convert meters to feet multiply by 3.2808
To convert feet to meters multiply by 0.3048

THIS MAP COMPLIES WITH NATIONAL MAP ACCURACY STANDARDS
FOR SALE BY U.S. GEOLOGICAL SURVEY, DENVER COLORADO 80225, OR RESTON, VIRGINIA 22092

1	2	3	1	Overton Beach
2	3	4	2	Devils Throat
3	4	5	3	St. Thomas Gap
4	5	6	4	Lime Wash
5	6	7	5	Azure Ridge
6	7	8	6	Garrett Butte
7	8	9	7	Jumbo Peak
8	9	10	8	Iceberg Canyon

ADJOINING 7.5 QUADRANGLE NAMES

CONTOURS AND ELEVATIONS IN METERS
ROAD LEGEND

Improved Road
Unimproved Road
Trail
Interstate Route U.S. Route State Route

GOLD BUTTE, NEV.

PROVISIONAL EDITION 1984

36114-C2-TM-024

NEVADA
RESTON, VIRGINIA 22092