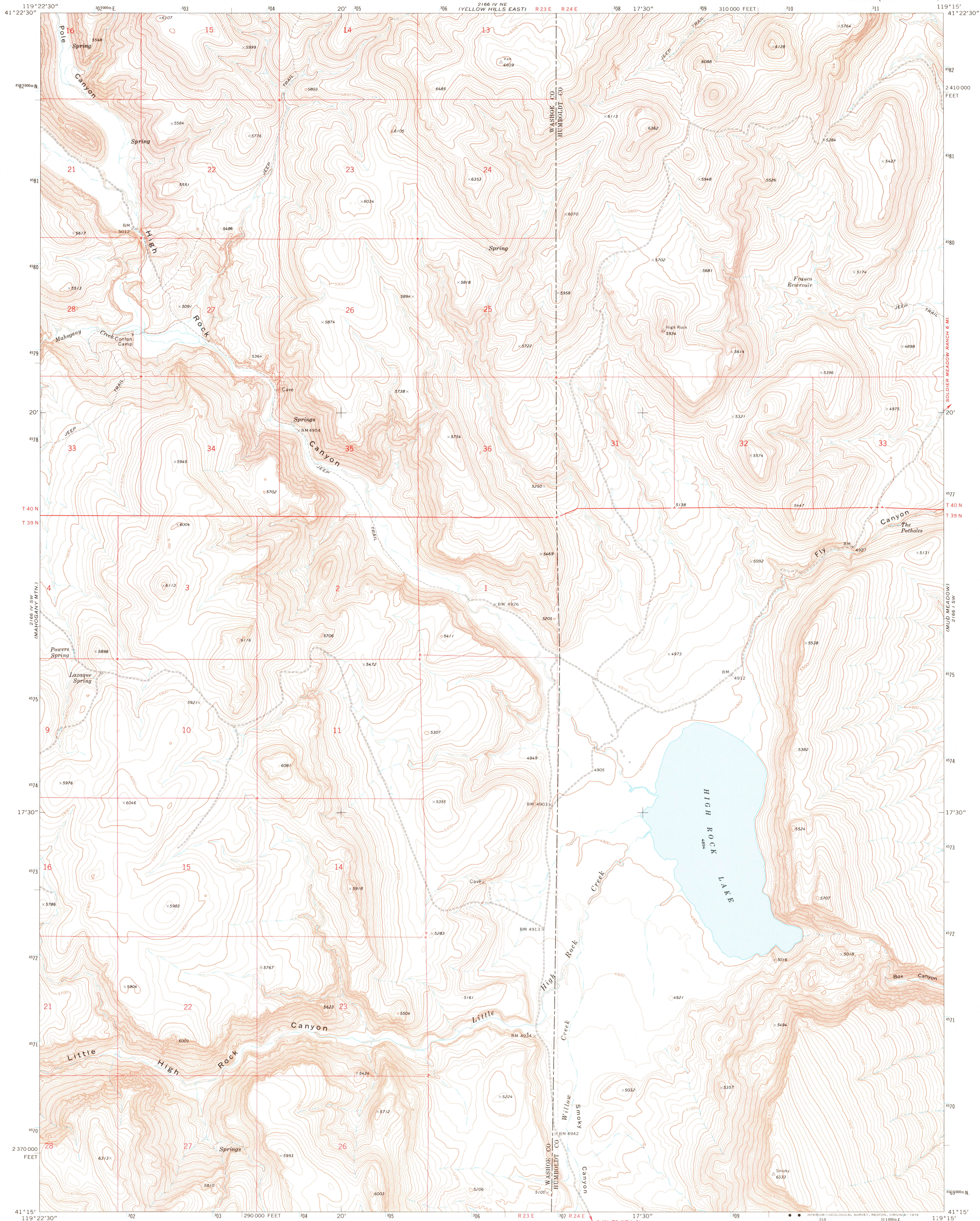


UNITED STATES
DEPARTMENT OF THE INTERIOR
GEOLOGICAL SURVEY

HIGH ROCK LAKE QUADRANGLE
NEVADA
7.5 MINUTE SERIES (TOPOGRAPHIC)



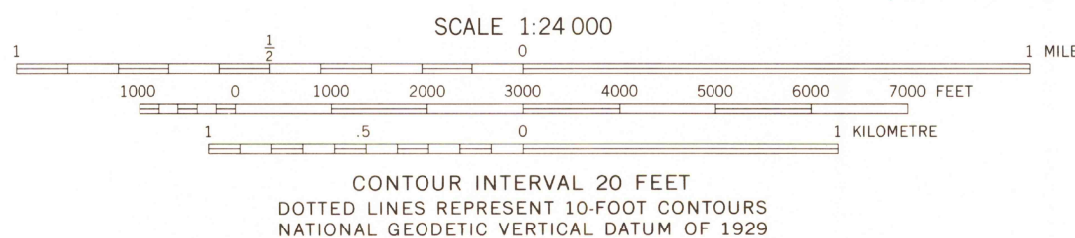
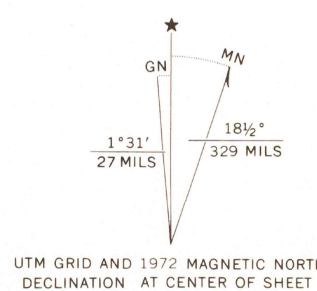
Mapped, edited, and published by the Geological Survey

Control by USGS and NOS/NOAA

Topography by photogrammetric methods from aerial photographs taken 1971. Field checked 1972

Projection and 10,000-foot grid ticks: Nevada coordinate system, west zone (transverse Mercator)
1000-metre Universal Transverse Mercator grid ticks, zone 11, shown in blue. 1927 North American datum

Fine red dashed lines indicate selected fence lines
Where omitted, land lines have not been established or are not shown because of insufficient data



ROAD CLASSIFICATION	
Primary highway, hard surface	Light-duty road, hard or improved surface
Secondary highway, hard surface	Unimproved road
Interstate Route	U. S. Route
	State Route

HIGH ROCK LAKE, NEV.
N4115-W11915/7.5

USGS
Historical File
Topographic Division

1972
AMS 2166 IV SE--SERIES V896

THIS MAP COMPLIES WITH NATIONAL MAP ACCURACY STANDARDS
FOR SALE BY U. S. GEOLOGICAL SURVEY, DENVER, COLORADO 80225, OR RESTON, VIRGINIA 22092
A FOLDER DESCRIBING TOPOGRAPHIC MAPS AND SYMBOLS IS AVAILABLE ON REQUEST

AUG 0 2 1976