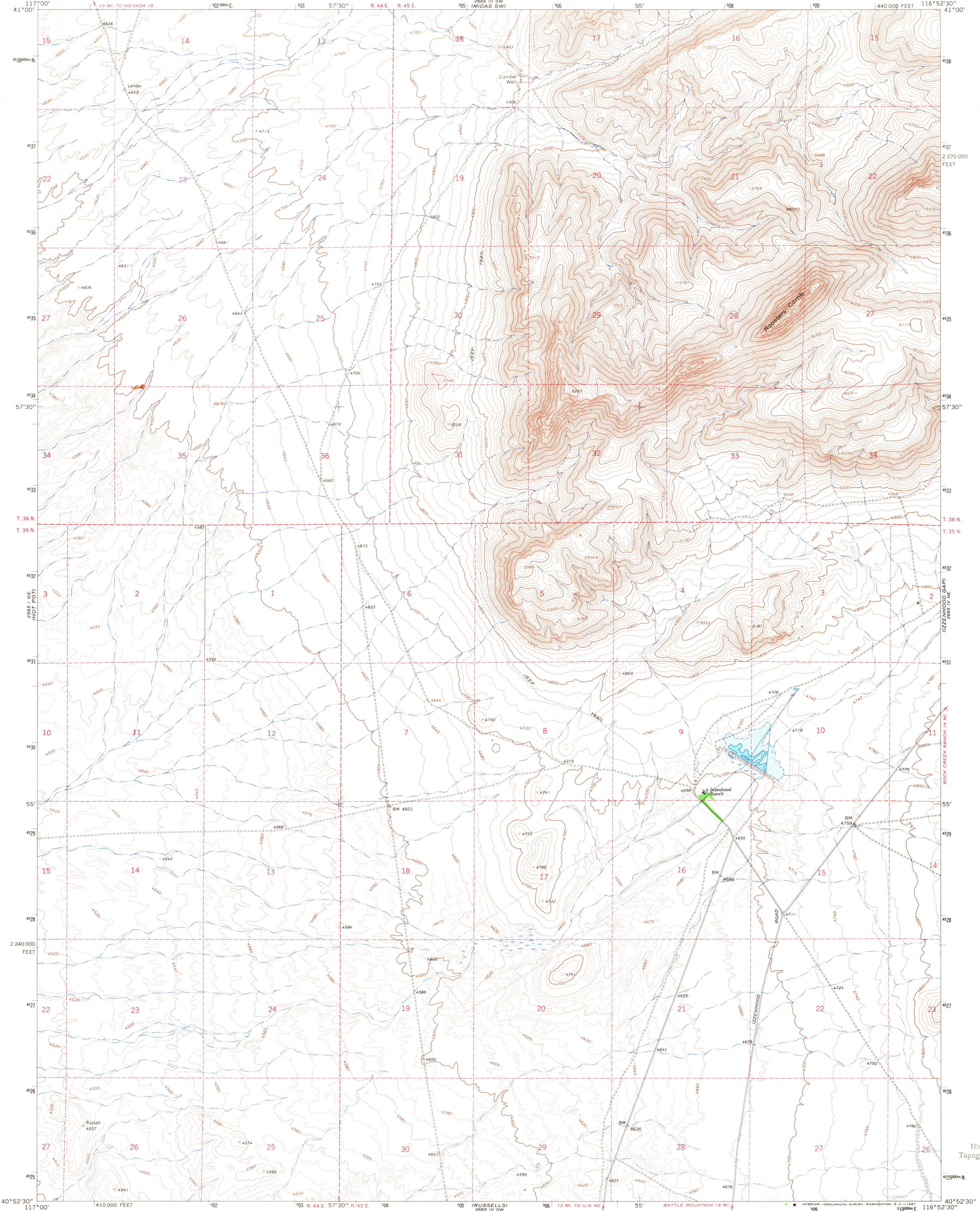
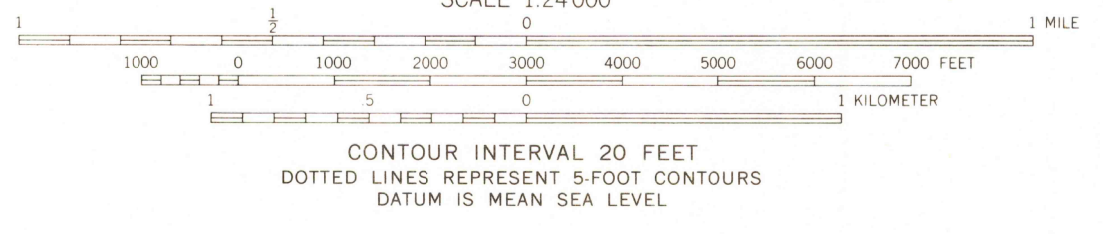
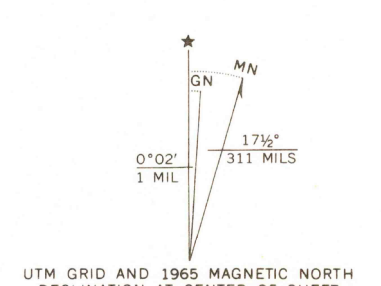


2665 IV SE
(SAMPLE HILL)



Mapped, edited, and published by the Geological Survey
Control by USGS and USC&GS
Topography by photogrammetric methods from aerial
photographs taken 1963. Field checked 1965.
Polyconic projection. 1927 North American datum
10,000-foot grid based on Nevada coordinate system, central zone
1000-meter Universal Transverse Mercator grid ticks,
zone 11, shown in blue
Fine red dashed lines indicate selected fence lines
Areas covered by dashed light-blue pattern
are subject to controlled inundation



ROAD CLASSIFICATION
Light-duty ————— Unimproved dirt - - - - -

U.S.G.S.
FILE COPY
TOPOGRAPHIC DIVISION

IZZENHOOD RANCH, NEV.
N4052.5-W11652.5/7.5
1965
AMS 2665 IV NW-SERIES V896

USGS
Historical File
Topographic Division

3345
FEB 20 1968