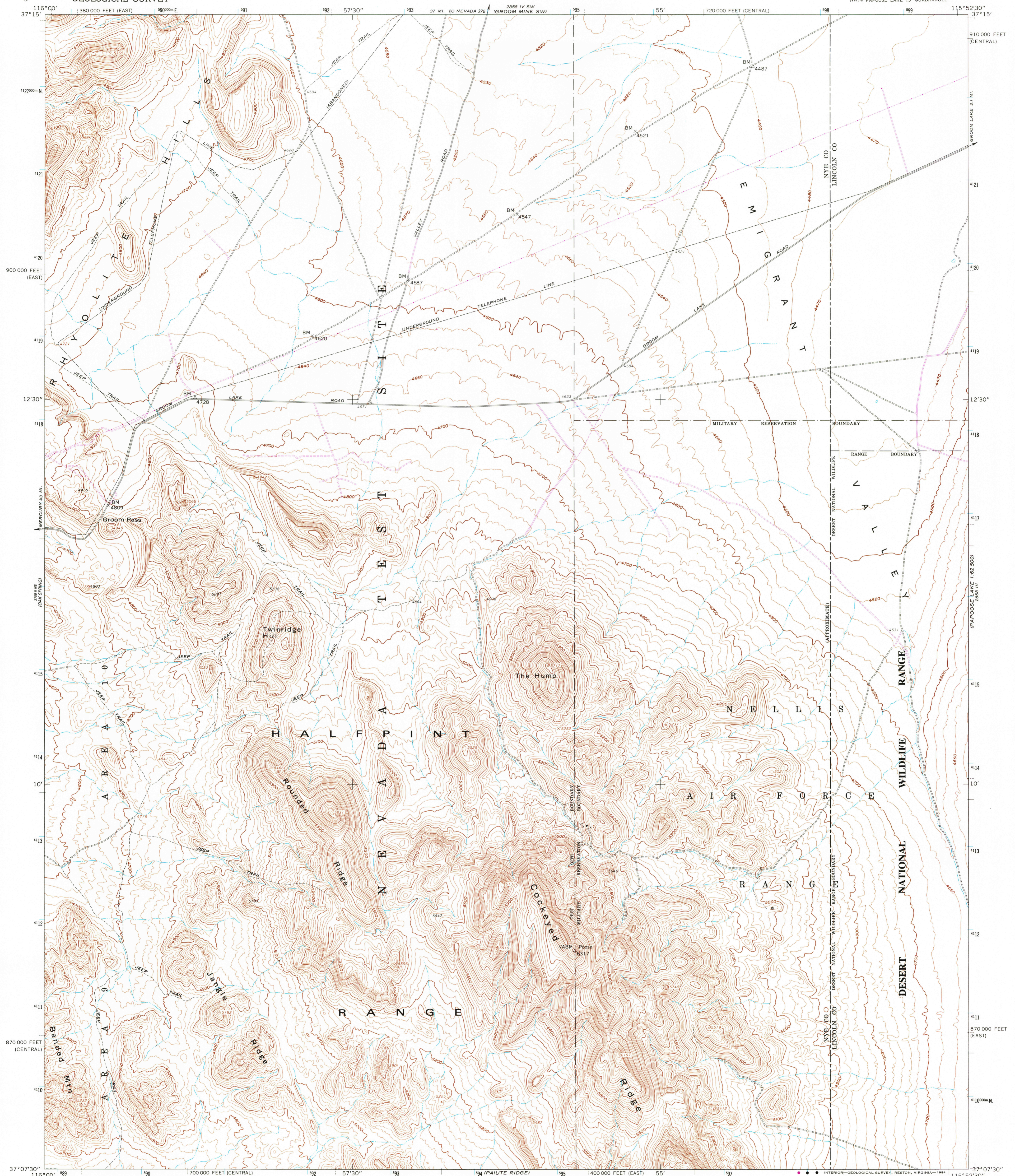
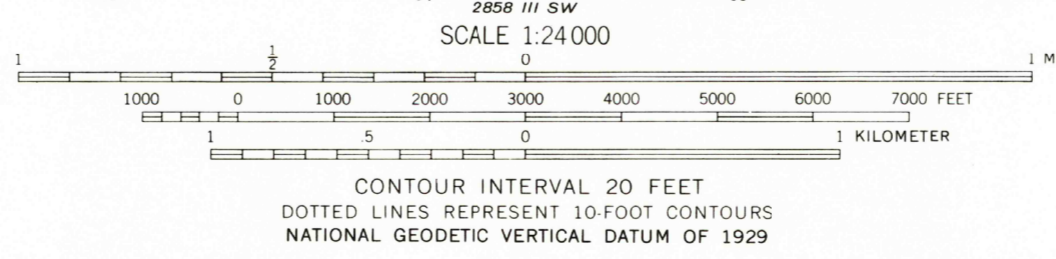
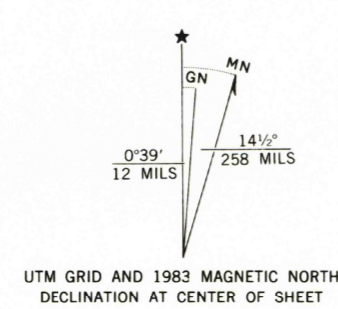


UNITED STATES
DEPARTMENT OF THE INTERIOR
GEOLOGICAL SURVEY

JANGLE RIDGE QUADRANGLE
NEVADA
7.5 MINUTE SERIES (TOPOGRAPHIC)
NW/4 PAPOOSE LAKE 15 QUADRANGLE



Mapped, edited, and published by the Geological Survey in cooperation with the Atomic Energy Commission Control by USGS, NOS/NOAA, and Atomic Energy Commission
Topography by photogrammetric methods from aerial photographs taken 1959. Field checked 1961
Polyconic projection. 10,000 foot grid ticks based on Nevada coordinate system, central and east zones
1000-meter Universal Transverse Mercator grid, zone 11, shown in blue 1927 North American Datum
To place on the predicted North American Datum 1983 move the projection lines 8 meters north and 77 meters east as shown by dashed corner ticks
There may be private inholdings within the boundaries of the National or State reservations shown on this map



ROAD CLASSIFICATION
Light-duty ——— Unimproved dirt - - - - -

THIS MAP COMPLIES WITH NATIONAL MAP ACCURACY STANDARDS
FOR SALE BY U. S. GEOLOGICAL SURVEY, DENVER, COLORADO 80225, OR RESTON, VIRGINIA 22092
A FOLDER DESCRIBING TOPOGRAPHIC MAPS AND SYMBOLS IS AVAILABLE ON REQUEST

Revisions shown in purple and woodland compiled from aerial photographs taken 1980 and other sources. This information not field checked. Map edited 1983

JANGLE RIDGE, NEV.
NW/4 PAPOOSE LAKE 15 QUADRANGLE
37115-B8-TF-024

1961
PHOTOREVISED 1983
DMA 258 III NW—SERIES V895

2025 RELEASE UNDER E.O. 14176
USGS AND HISTORICAL MAP ARCHIVES