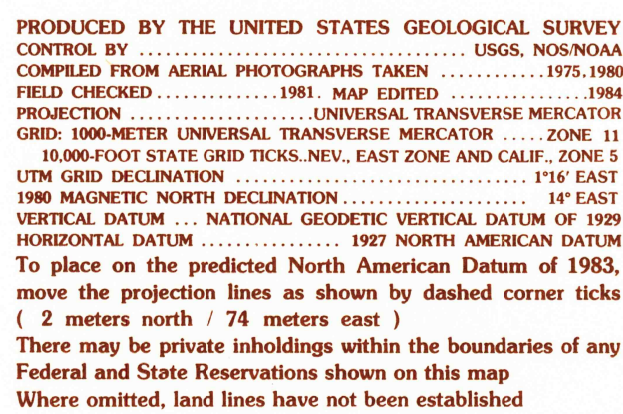


JUNIPER MINE QUADRANGLE
NEVADA—CALIFORNIA
7.5 MINUTE SERIES (TOPOGRAPHIC)



INTERIOR—GEOLOGICAL SURVEY

SCALE 1:24 000

1 0.5 0 KILOMETERS 1 2
1000 0 2000
METERS

1 0.5 0 MILES 1
1000 0 2000 3000 4000 5000 6000 7000 8000 9000 10 000
FEET

CONTOUR INTERVAL 10 METERS

CONTROL ELEVATIONS SHOWN TO THE NEAREST 0.1 METER
OTHER ELEVATIONS SHOWN TO THE NEAREST METER

To convert meters to feet multiply by 3.2808
To convert feet to meters multiply by 0.3048

THIS MAP COMPLIES WITH NATIONAL MAP ACCURACY STANDARDS

FOR SALE BY U.S. GEOLOGICAL SURVEY, DENVER, COLORADO 80225, OR RESTON, VIRGINIA 2209

1	2	3	1 Tenmile Well
4		5	2 Searchlight SE
			3 Spirit Mtn.
			4 West of Juniper Min
			5 Bridge Canyon
			6 Homer Mtn.
6	7	8	7 East of Homer Mtn.
			8 Mt. Manchester

ADJOINING 7 1/2 QUADRANCE NAMES

Improved Road.....
Unimproved Road.....
Trail.....

 Interstate Route  U.S. Route  State Route

JUNIPER MINE, NEV.—CALIF.
PROVISIONAL EDITION 1984

35114-B7-TM-024

RETURN TO:
USGS AND HISTORICAL MAP ARCHIVES