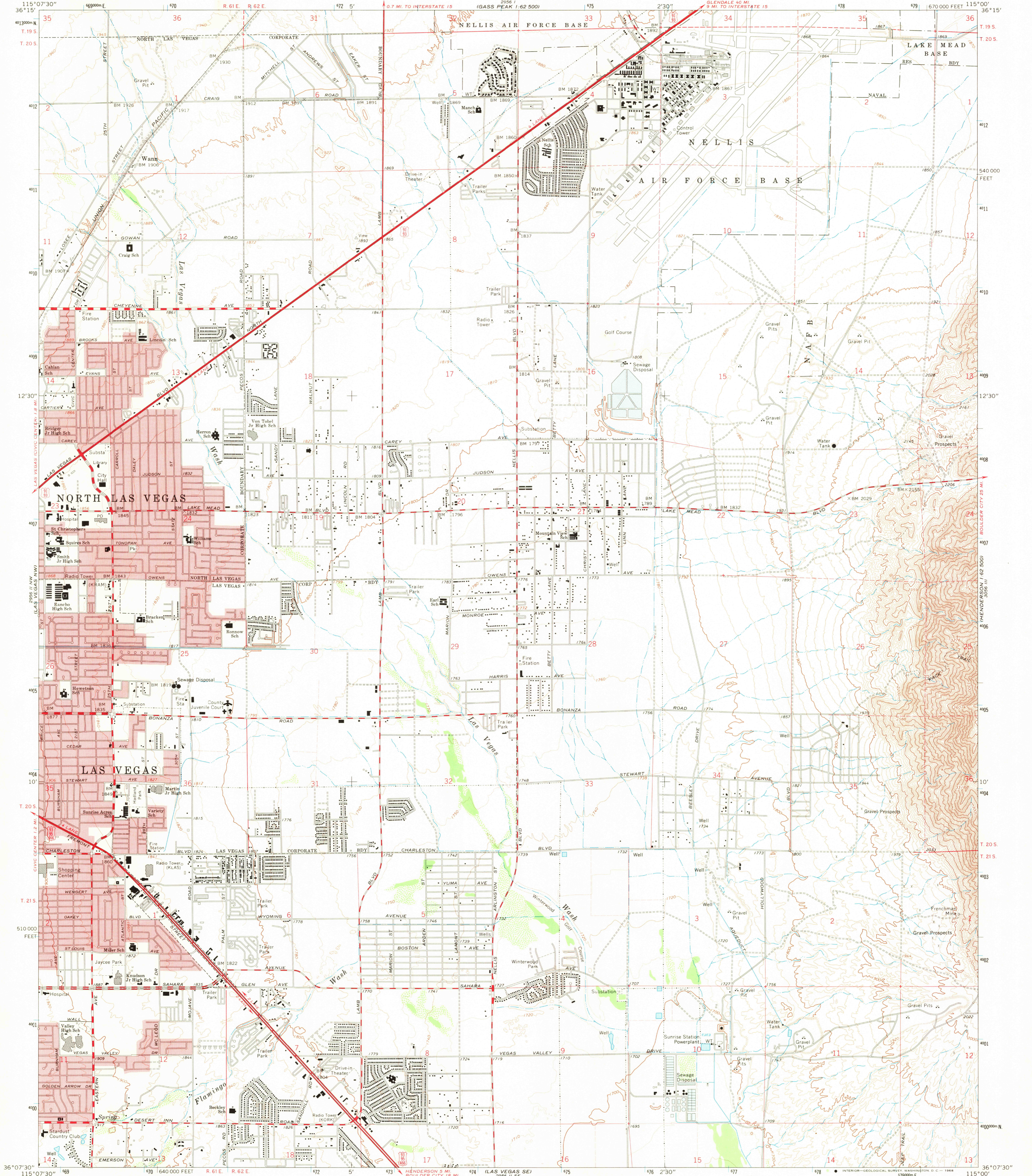


UNITED STATES
DEPARTMENT OF THE INTERIOR
GEOLOGICAL SURVEY

LAS VEGAS NE QUADRANGLE
NEVADA—CLARK CO.
7.5 MINUTE SERIES (TOPOGRAPHIC)
NE/4 LAS VEGAS 15' QUADRANGLE



Mapped, edited, and published by the Geological Survey
Control by USGS and USC&GS
Topography by photogrammetric methods from aerial
photographs taken 1965. Field checked 1967
Polyconic projection. 1927 North American datum
10,000-foot grid based on Nevada coordinate system, east zone
1000-meter Universal Transverse Mercator grid ticks,
zone 11, shown in blue
Red tint indicates areas in which only landmark buildings are shown
Fine red dashed lines indicate selected fence lines
A portion of the west half of this map
lies within a subsidence area

UTM GRID AND 1967 MAGNETIC NORTH
DECLINATION AT CENTER OF SHEET

CONTOUR INTERVAL 20 FEET
DOTTED LINES REPRESENT 10-FOOT CONTOURS
DATUM IS MEAN SEA LEVEL

SCALE 1:24,000

U.S.G.S.
Historical File
Topographic Division

ROAD CLASSIFICATION
Heavy-duty — Light-duty
Medium-duty — Unimproved dirt
U.S. Route

U.S.G.S.
FILE COPY
TOPOGRAPHIC DIVISION

LAS VEGAS NE, NEV.
NE/4 LAS VEGAS 15' QUADRANGLE
N3607.5—W11500/7.5
1967
AMS 2956 II NE—SERIES V896

FOR SALE BY U.S. GEOLOGICAL SURVEY, DENVER, COLORADO 80225, OR WASHINGTON, D. C. 20242
A FOLDER DESCRIBING TOPOGRAPHIC MAPS AND SYMBOLS IS AVAILABLE ON REQUEST