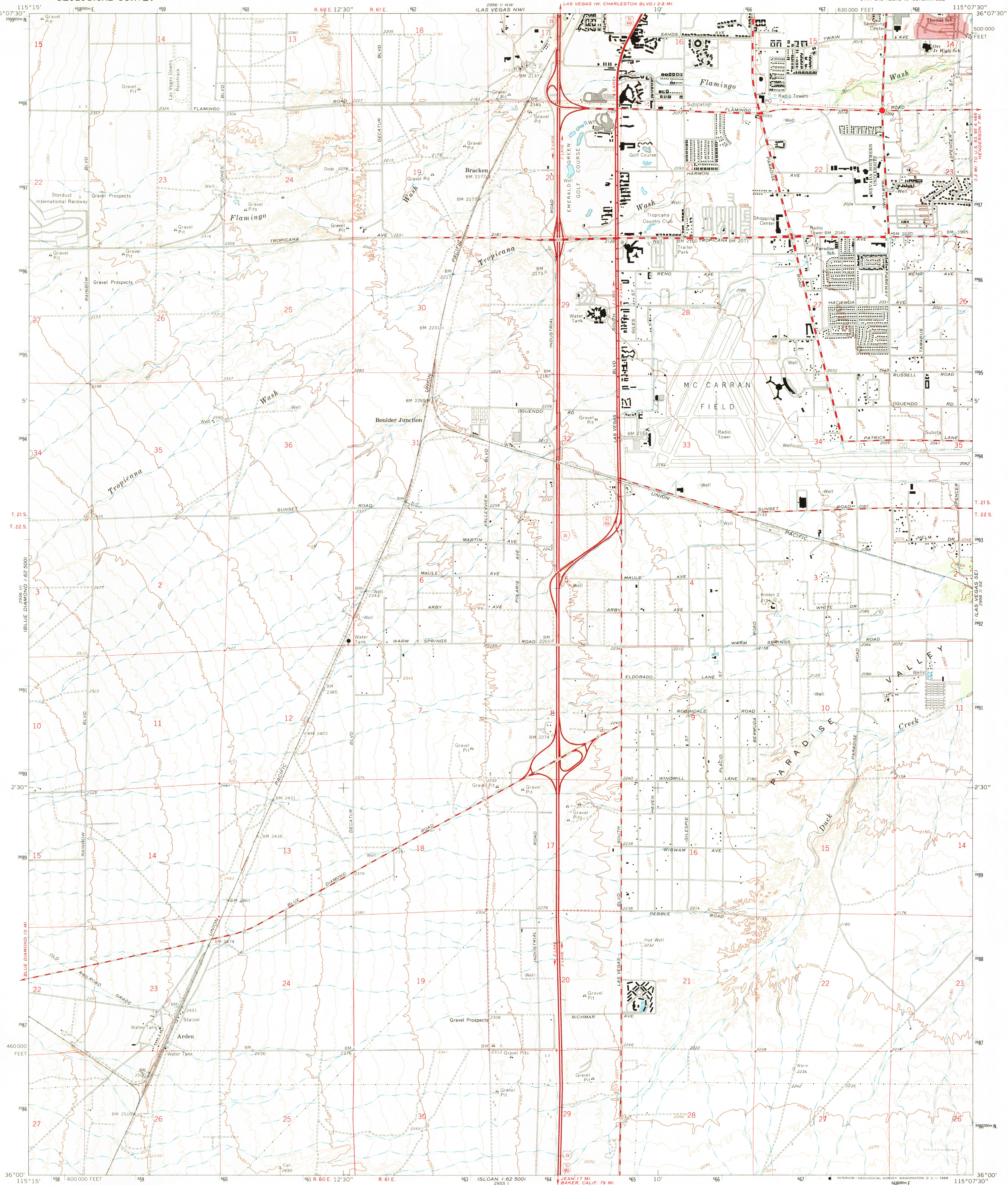


UNITED STATES
DEPARTMENT OF THE INTERIOR
GEOLOGICAL SURVEY

LAS VEGAS SW QUADRANGLE
NEVADA—CLARK CO.
7.5 MINUTE SERIES (TOPOGRAPHIC)
SW/4 LAS VEGAS 15' QUADRANGLE



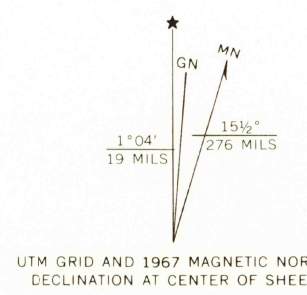
Mapped, edited, and published by the Geological Survey
Control by USGS and USC&GS

Topography by photogrammetric methods from aerial
photographs taken 1965. Field checked 1967
Polyconic projection. 1927 North American datum
10,000-foot grid based on Nevada coordinate system, east zone
1000-meter Universal Transverse Mercator grid ticks,
zone 11, shown in blue

Red tint indicates areas in which only landmark buildings are shown

Fine red dashed lines indicate selected fence lines

A portion of the northeast quarter of this map
lies within a subsidence area



SCALE 1:24,000

CONTOUR INTERVAL 10 FEET
DATUM IS MEAN SEA LEVEL

THIS MAP COMPLIES WITH NATIONAL MAP ACCURACY STANDARDS
FOR SALE BY U.S. GEOLOGICAL SURVEY, DENVER, COLORADO 80225, OR WASHINGTON, D.C. 20242
A FOLDER DESCRIBING TOPOGRAPHIC MAPS AND SYMBOLS IS AVAILABLE ON REQUEST

ROAD CLASSIFICATION
Heavy-duty ——— Light-duty ———
Medium-duty ——— Unimproved dirt ———
Interstate Route ——— U.S. Route ———



U.S.G.S.
FILE COPY
TOPOGRAPHIC DIVISION

LAS VEGAS SW, NEV.
SW/4 LAS VEGAS 15' QUADRANGLE
N3600—W11507.5/7.5

1967

AMS 2956 II SW—SERIES V866

USGS
Historical File
Topographic Division