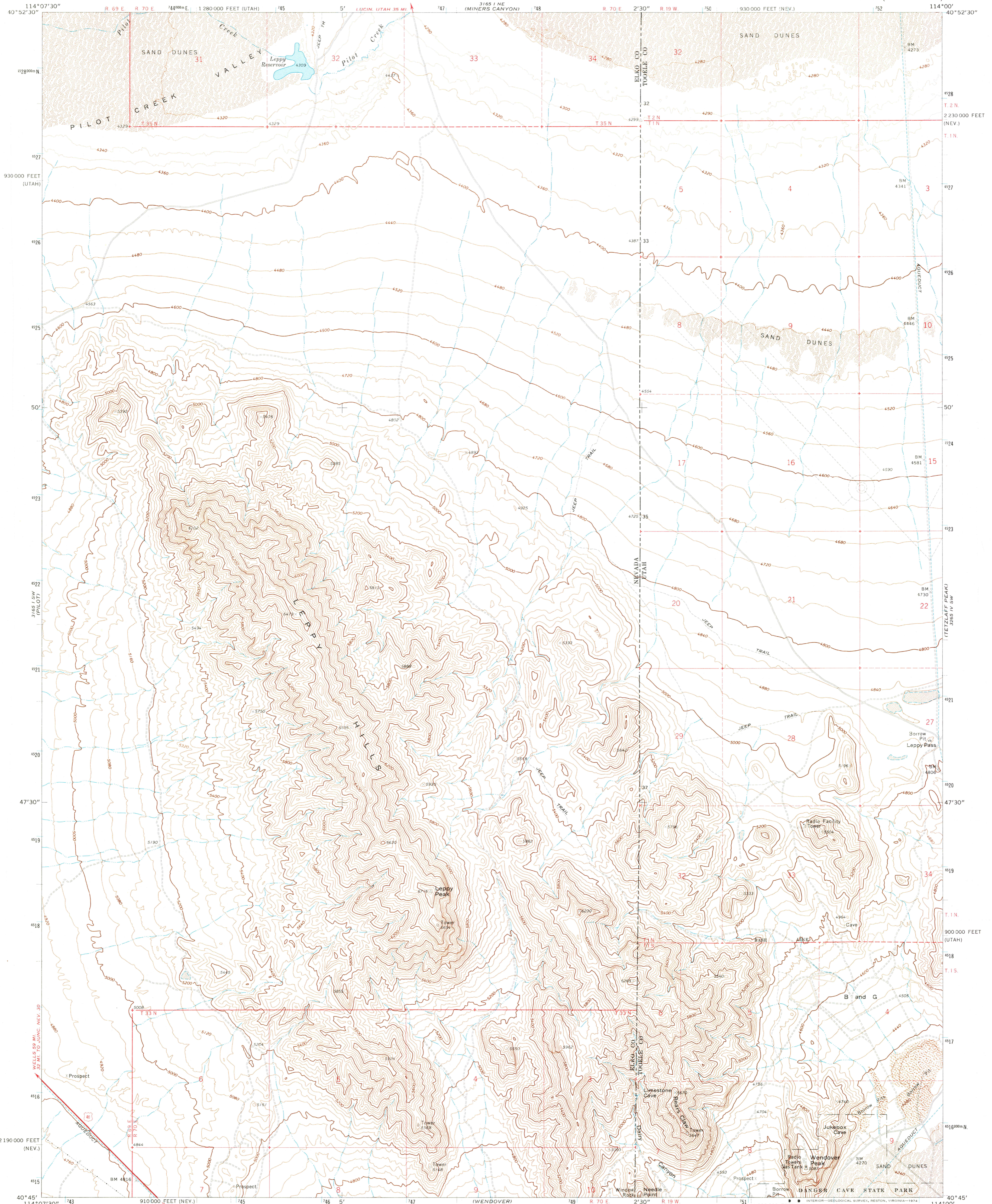
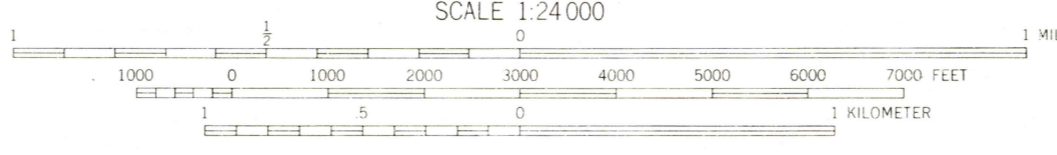
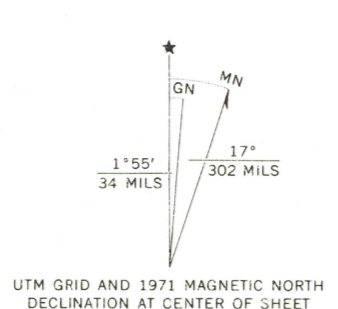


UNITED STATES
DEPARTMENT OF THE INTERIOR
GEOLOGICAL SURVEY

LEPPY PEAK QUADRANGLE
NEVADA-UTAH
7.5 MINUTE SERIES (TOPOGRAPHIC)



Mapped, edited, and published by the Geological Survey
Control by USGS and USC&GS
Topography by photogrammetric methods from aerial photographs taken 1970. Field checked 1971
Projection: Nevada coordinate system, east zone (Transverse Mercator)
10,000-foot grid ticks based on Nevada coordinate system, east zone and Utah coordinate system, central zone
1000-meter Universal Transverse Mercator grid ticks, zone 11, shown in blue. 1927 North American datum
Where omitted, land lines have not been established



CONTOUR INTERVAL 40 FEET
DOTTED LINES REPRESENT 10-FOOT CONTOURS
NATIONAL GEODETIC VERTICAL DATUM OF 1929



- ROAD CLASSIFICATION
- Primary highway, hard surface
 - Secondary highway, hard surface
 - Light duty road, hard or improved surface
 - Unimproved road
 - Interstate Route
 - U. S. Route
 - State Route

THIS MAP COMPLIES WITH NATIONAL MAP ACCURACY STANDARDS
FOR SALE BY U. S. GEOLOGICAL SURVEY, DENVER, COLORADO 80225, OR RESTON, VIRGINIA 22092
A FOLDER DESCRIBING TOPOGRAPHIC MAPS AND SYMBOLS IS AVAILABLE ON REQUEST

USGS
Historical File
Topographic Division
LEPPY PEAK, NEV.-UTAH
N4045-W11400/7.5
1971

DEC 19 1974

3900