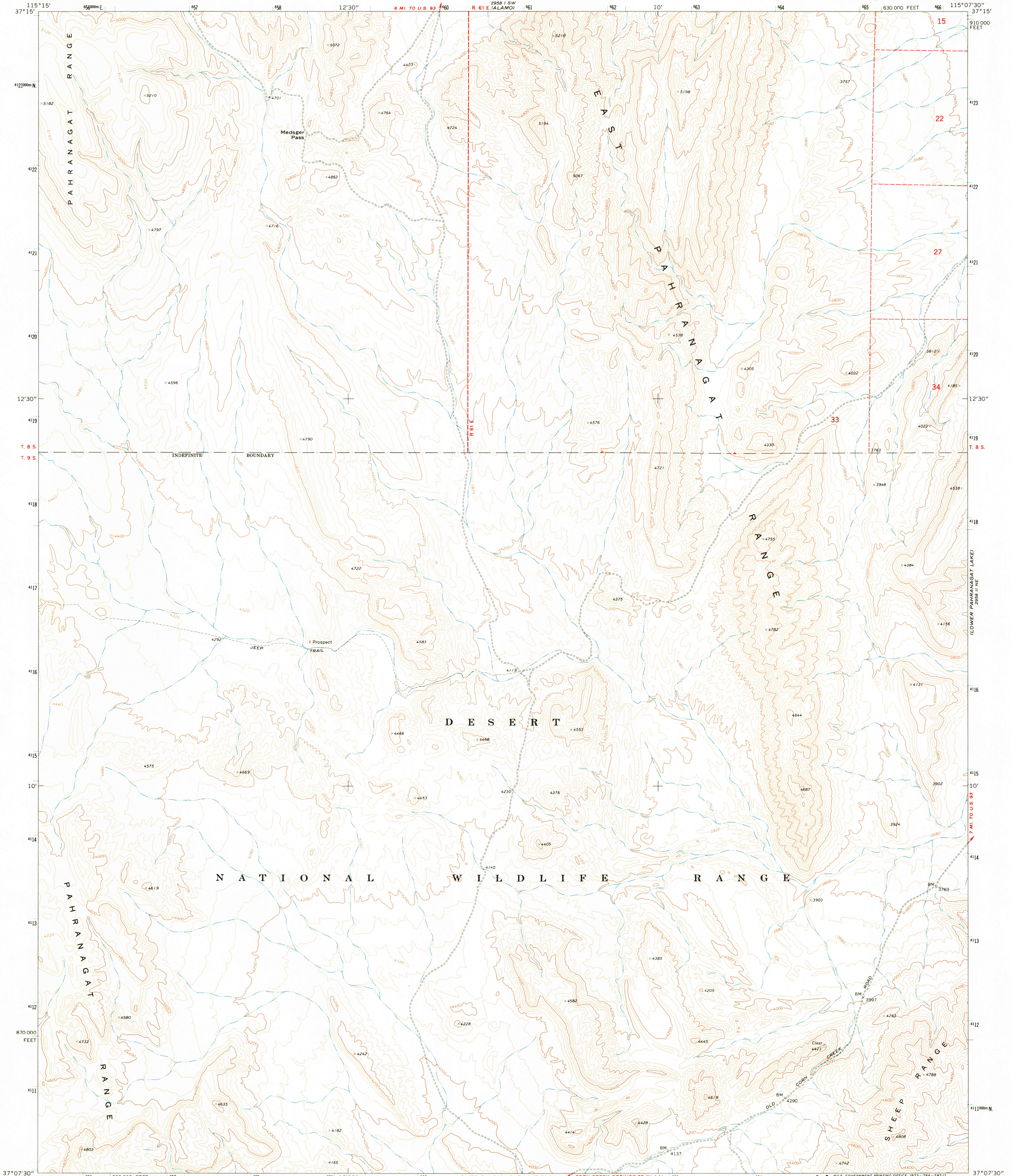
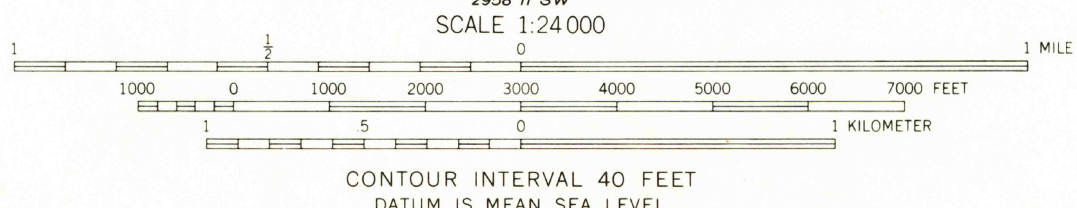
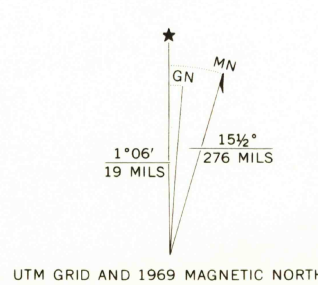


2958 II SW
ALAMO 50'



Mapped, edited, and published by the Geological Survey
Control by USGS and USC&GS
Topography by photogrammetric methods from aerial
photographs taken 1967. Field checked 1969
Polyconic projection. 1927 North American datum
10,000-foot grid based on Nevada coordinate system, east zone
1000-meter Universal Transverse Mercator grid ticks,
zone 11, shown in blue
Where omitted, land lines have not been established



ROAD CLASSIFICATION

Primary highway, hard surface	Light-duty road, hard or improved surface
Secondary highway, hard surface	Unimproved road
Interstate Route	U. S. Route
	State Route

THIS MAP COMPLIES WITH NATIONAL MAP ACCURACY STANDARDS
FOR SALE BY U. S. GEOLOGICAL SURVEY, DENVER, COLORADO 80225, OR WASHINGTON, D. C. 20242
A FOLDER DESCRIBING TOPOGRAPHIC MAPS AND SYMBOLS IS AVAILABLE ON REQUEST

LOWER PAHRANAGAT LAKE NW, NEV.
N3707.5—W11507.5/7.5

USGS
Historical File
Topographic Division
1969
AMS 2958 II NW—SERIES V896

2958 II SW
ALAMO 50'
JUN 1 1973
Dmg
2500