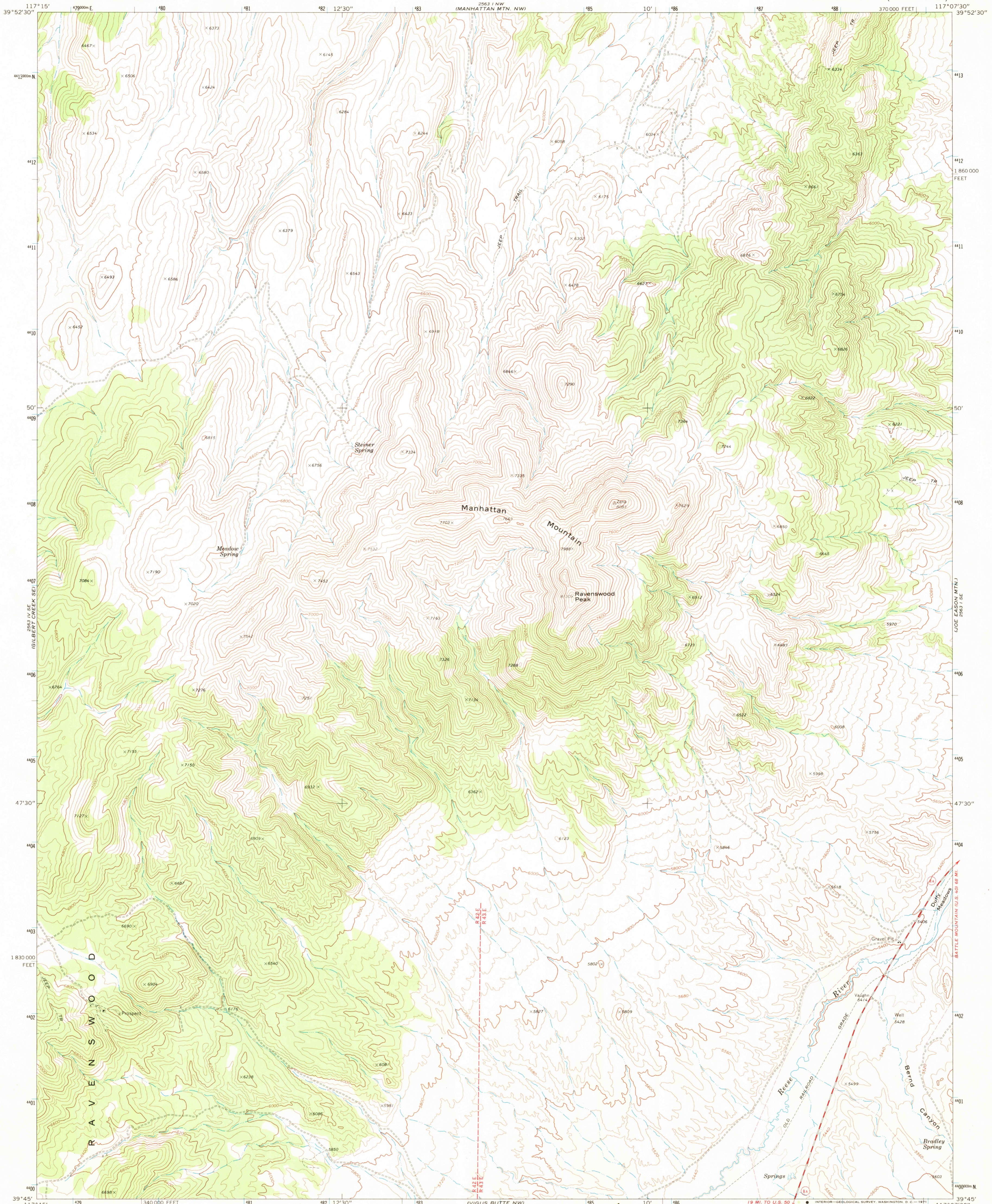


UNITED STATES
DEPARTMENT OF THE INTERIOR
GEOLOGICAL SURVEY

MANHATTAN MTN. QUADRANGLE
NEVADA-LANDER CO.
7.5 MINUTE SERIES (TOPOGRAPHIC)

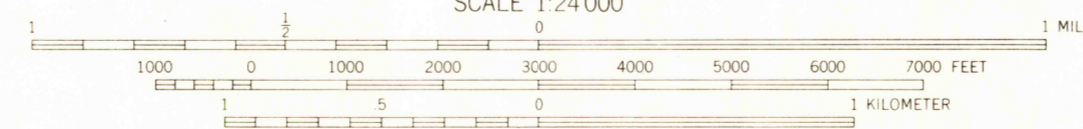
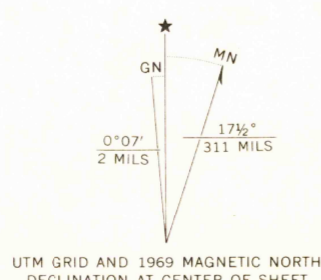


Mapped, edited, and published by the Geological Survey
Control by USGS and USC&GS

Topography by photogrammetric methods from aerial
photographs taken 1966. Field checked 1969

Polyconic projection. 1927 North American datum
10,000-foot grid based on Nevada coordinate system, central zone
1000-meter Universal Transverse Mercator grid ticks,
zone 11, shown in blue

Fine red dashed lines indicate selected fence lines
Where omitted, land lines have not been established
or are not shown because of insufficient data



ROAD CLASSIFICATION
Secondary highway, all weather. Unimproved road, fair or dry
hard surface. weather
State Route

THIS MAP COMPLIES WITH NATIONAL MAP ACCURACY STANDARDS
FOR SALE BY U.S. GEOLOGICAL SURVEY, DENVER, COLORADO 80225. OR WASHINGTON, D. C. 20242
A FOLDER DESCRIBING TOPOGRAPHIC MAPS AND SYMBOLS IS AVAILABLE ON REQUEST

USGS
HISTORICAL FILE
TOPOGRAPHIC DIVISION

MANHATTAN MTN., NEV.
N3945-W11707.5/7.5

1969

AMS 2563 1 SW-SERIES V896

SEP 13 1971

2312