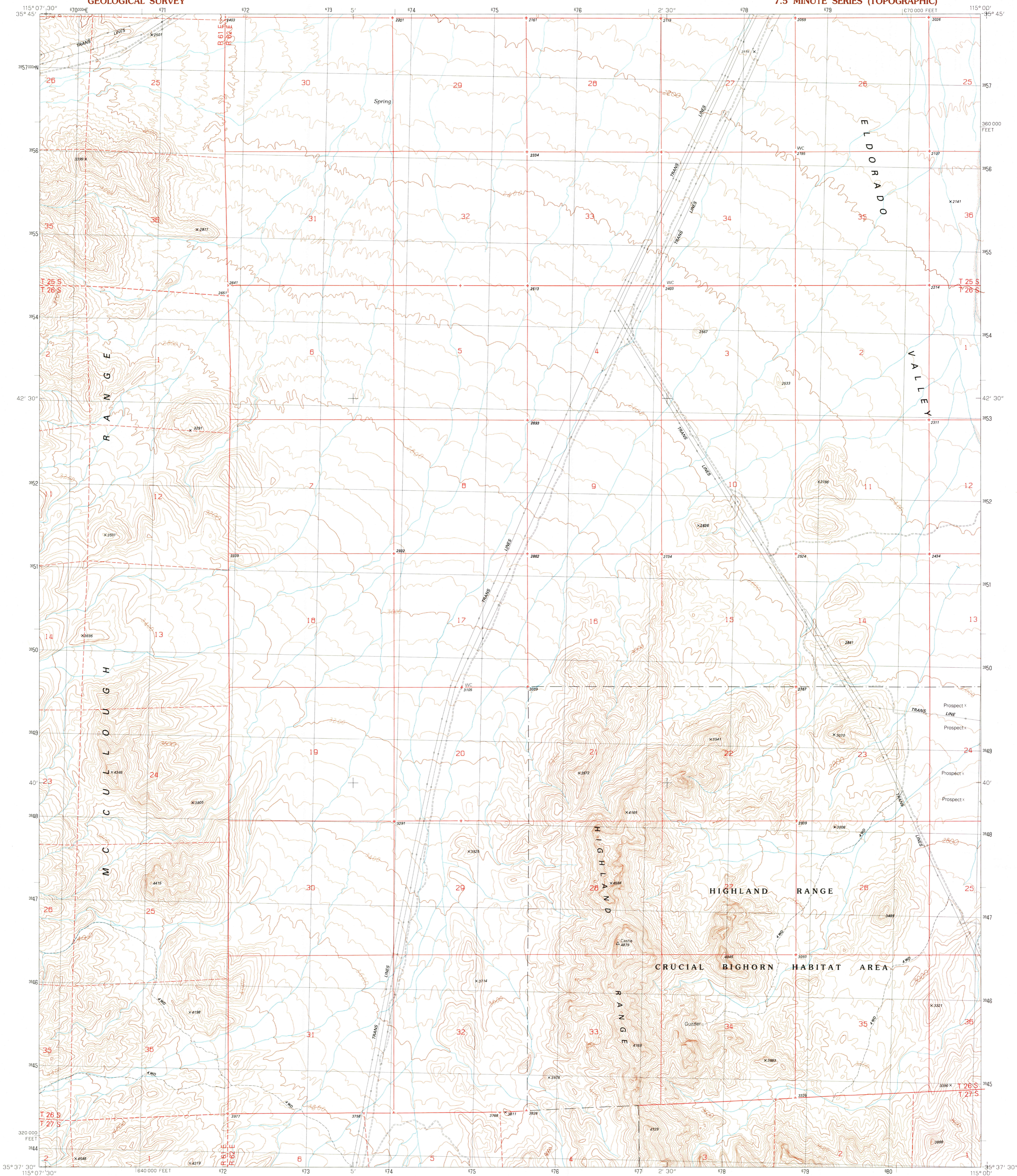


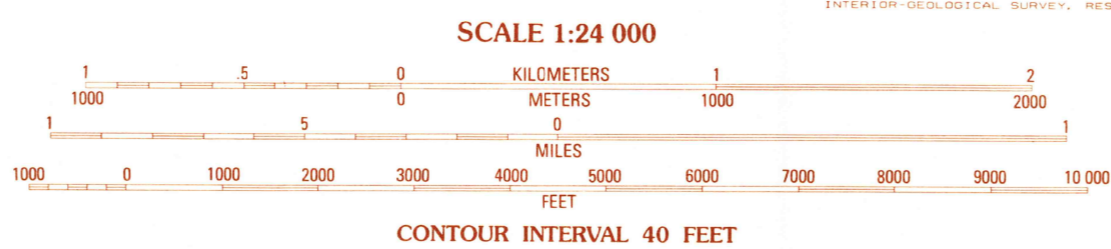
UNITED STATES
DEPARTMENT OF THE INTERIOR
GEOLOGICAL SURVEY

MC CULLOUGH MOUNTAIN NE QUADRANGLE
NEVADA-CLARK CO.
7.5 MINUTE SERIES (TOPOGRAPHIC)



PRODUCED BY THE UNITED STATES GEOLOGICAL SURVEY
CONTROL BY USGS, NOS/NOAA
COMPILED FROM AERIAL PHOTOGRAPHS TAKEN 1958
FIELD CHECKED 1960
LIMITED REVISION FROM AERIAL PHOTOGRAPHS TAKEN 1986
FIELD CHECKED 1987. MAP EDITED 1989
PROJECTION TRANSVERSE MERCATOR
GRID: 1000-METER UNIVERSAL TRANSVERSE MERCATOR
10,000 FOOT STATE GRID TICKS NEVADA, EAST ZONE
UTM GRID DECLINATION 1°08' EAST
1989 MAGNETIC NORTH DECLINATION 13°30' EAST
VERTICAL DATUM NATIONAL GEODETIC VERTICAL DATUM OF 1929
HORIZONTAL DATUM 1927 NORTH AMERICAN DATUM
To place on the predicted North American Datum of 1983,
move the projection lines as shown by dashed corner ticks
(4 meters north and 75 meters east)
There may be private inholdings within the boundaries of any
Federal and State Reservations shown on this map
Public Land Survey System is shown as published in 1960 and
verified or supplemented in 1987

PROVISIONAL MAP
Produced from original
manuscript drawings. Infor-
mation shown as of date of
field check.



THIS MAP COMPLIES WITH NATIONAL MAP ACCURACY STANDARDS
FOR SALE BY U.S. GEOLOGICAL SURVEY, DENVER, COLORADO 80225
OR RESTON, VIRGINIA 22092



QUADRANGLE LOCATION

1	2	3	1 Hidden Valley
			2 Sloan SE
			3 Boulder City SW
4		5	4 McCullough Pass
			5 Nevada Canyon
			6 McCullough Mtn
			7 Highland Spring
6	7	8	8 Nelson SW

ADJOINING 7.5' QUADRANGLE NAMES

ROAD LEGEND

Improved Road
Unimproved Road
Trail

Interstate Route U.S. Route State Route

MC CULLOUGH MOUNTAIN NE, NEV.
PROVISIONAL EDITION 1989
35115-F1-TF-024

RECORD FILE COPY
MAR 19 1990
USGS MIND HISTORICAL MAP