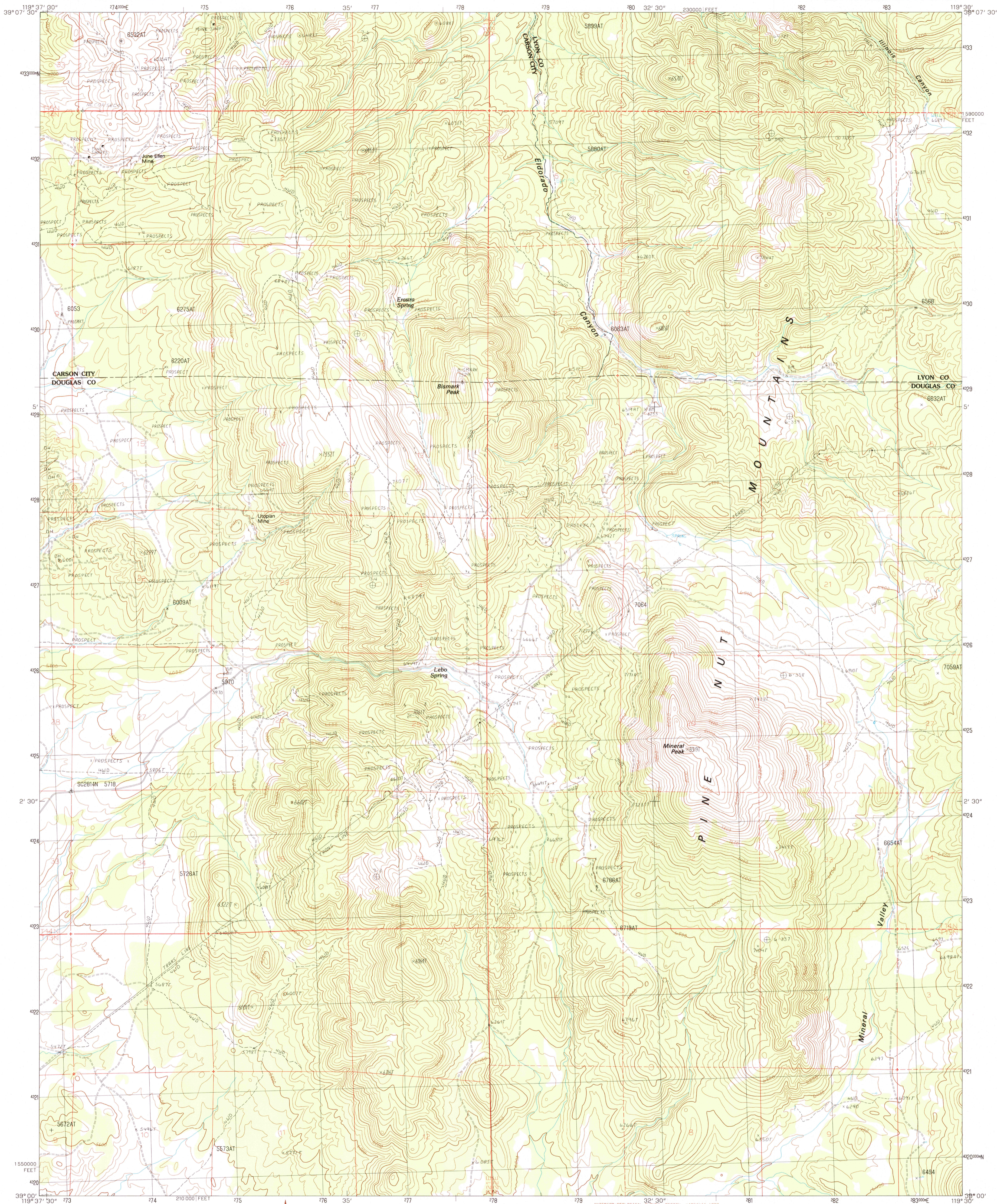


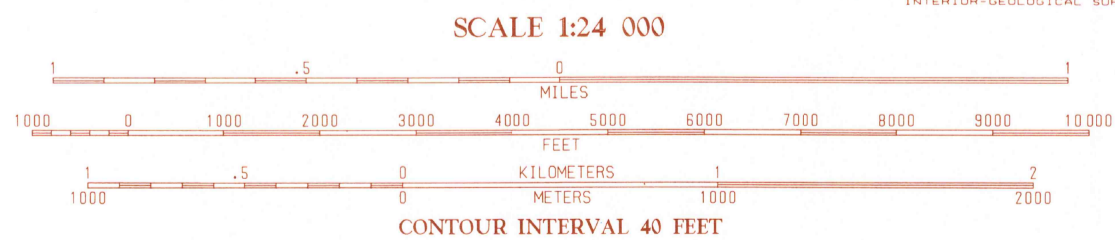
UNITED STATES  
DEPARTMENT OF THE INTERIOR  
GEOLOGICAL SURVEY

MINERAL PEAK QUADRANGLE  
NEVADA  
7.5 MINUTE SERIES (TOPOGRAPHIC)



PRODUCED BY THE UNITED STATES GEOLOGICAL SURVEY  
CONTROL BY USGS, NOS/NOAA  
COMPILED FROM AERIAL PHOTOGRAPHS TAKEN 1982  
FIELD CHECKED 1984. MAP EDITED 1987  
PROJECTION TRANSVERSE MERCATOR  
GRID: 1000-METER UNIVERSAL TRANSVERSE MERCATOR  
UTM GRID DECLINATION 1987  
UTM MAGNETIC NORTH DECLINATION 1987  
VERTICAL DATUM NATIONAL GEODETIC VERTICAL DATUM OF 1929  
HORIZONTAL DATUM 1987 NORTH AMERICAN DATUM  
To place on the predicted North American Datum of 1983,  
move the projection lines as shown by dashed corner ticks  
(13 meters north and 86 meters east)  
There may be private inholdings within the boundaries of any  
Federal and State Reservations shown on this map

PROVISIONAL MAP  
Produced from original  
manuscript drawings. Infor-  
mation shown as of date of  
photography.



To convert meters to feet multiply by 3.2808  
To convert feet to meters multiply by .3048  
THIS MAP COMPLIES WITH NATIONAL MAP ACCURACY STANDARDS  
FOR SALE BY U.S. GEOLOGICAL SURVEY, DENVER, COLORADO 80225  
OR RESTON, VIRGINIA 22092

| QUADRANGLE LOCATION |   |   |   |   |   |   |   |
|---------------------|---|---|---|---|---|---|---|
| 1                   | 2 | 3 | 4 | 5 | 6 | 7 | 8 |
|                     |   |   |   |   |   |   |   |
|                     |   |   |   |   |   |   |   |
|                     |   |   |   |   |   |   |   |
|                     |   |   |   |   |   |   |   |
|                     |   |   |   |   |   |   |   |
|                     |   |   |   |   |   |   |   |
|                     |   |   |   |   |   |   |   |

1 New Empire  
2 Dayton  
3 Como  
4 Mt. Tarnahan  
5 Mount Como  
6 Gardenville  
7 Mount Siegel  
8 Pine Nut Valley

ADJOINING 7.5' QUADRANGLE NAMES

ROAD LEGEND  
Improved Road  
Unimproved Road  
Trail  
Interstate Route  
U.S. Route  
State Route  
MINERAL PEAK, NEVADA  
PROVISIONAL EDITION 1987  
39119-A5-TF-024