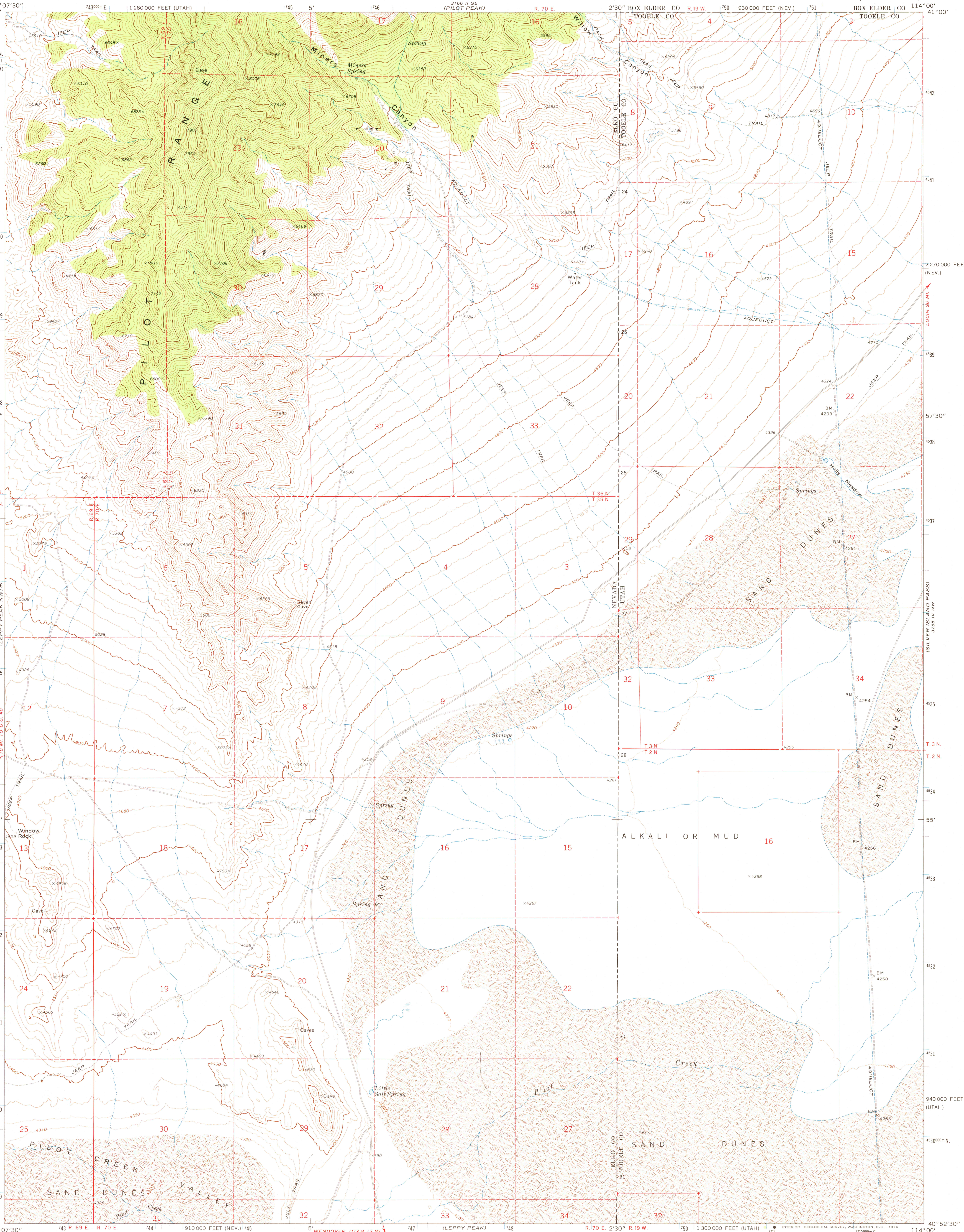
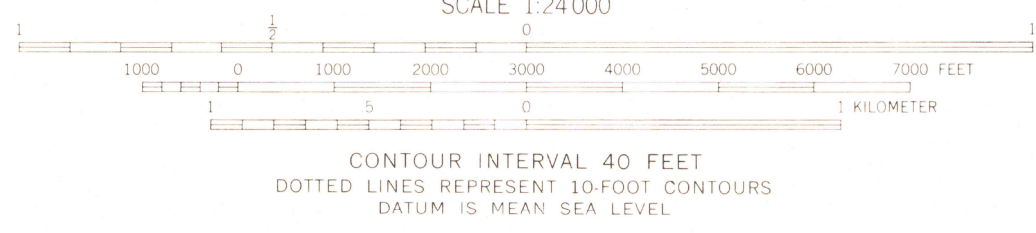


UNITED STATES  
DEPARTMENT OF THE INTERIOR  
GEOLOGICAL SURVEY

MINERS CANYON QUADRANGLE  
NEVADA-UTAH  
7.5 MINUTE SERIES (TOPOGRAPHIC)



Mapped, edited, and published by the Geological Survey  
Control by USGS and USC&GS  
Topography by photogrammetric methods from aerial  
photographs taken 1970. Field checked 1971  
Projection: Nevada coordinate system, east zone  
(transverse Mercator)  
10,000-foot grid ticks based on Nevada coordinate  
system, east zone and Utah coordinate system,  
central zone  
1000-meter Universal Transverse Mercator grid ticks,  
zone 11, shown in blue. 1927 North American datum  
Where omitted, land lines have not been established  
or are not shown because of insufficient data



ROAD CLASSIFICATION  
Primary highway, hard surface  
Secondary highway, hard surface  
Unimproved road  
Interstate Route  
U. S. Route  
State Route

MINERS CANYON, NEV.-UTAH  
N4052.5-W11400.7.5

1971

AMS 3165 1 NE-SERIES V896

THIS MAP COMPLIES WITH NATIONAL MAP ACCURACY STANDARDS  
FOR SALE BY U. S. GEOLOGICAL SURVEY, DENVER, COLORADO 80225, OR RESTON, VIRGINIA 22092  
A FOLDER DESCRIBING TOPOGRAPHIC MAPS AND SYMBOLS IS AVAILABLE ON REQUEST

SEP 23 1974

2450