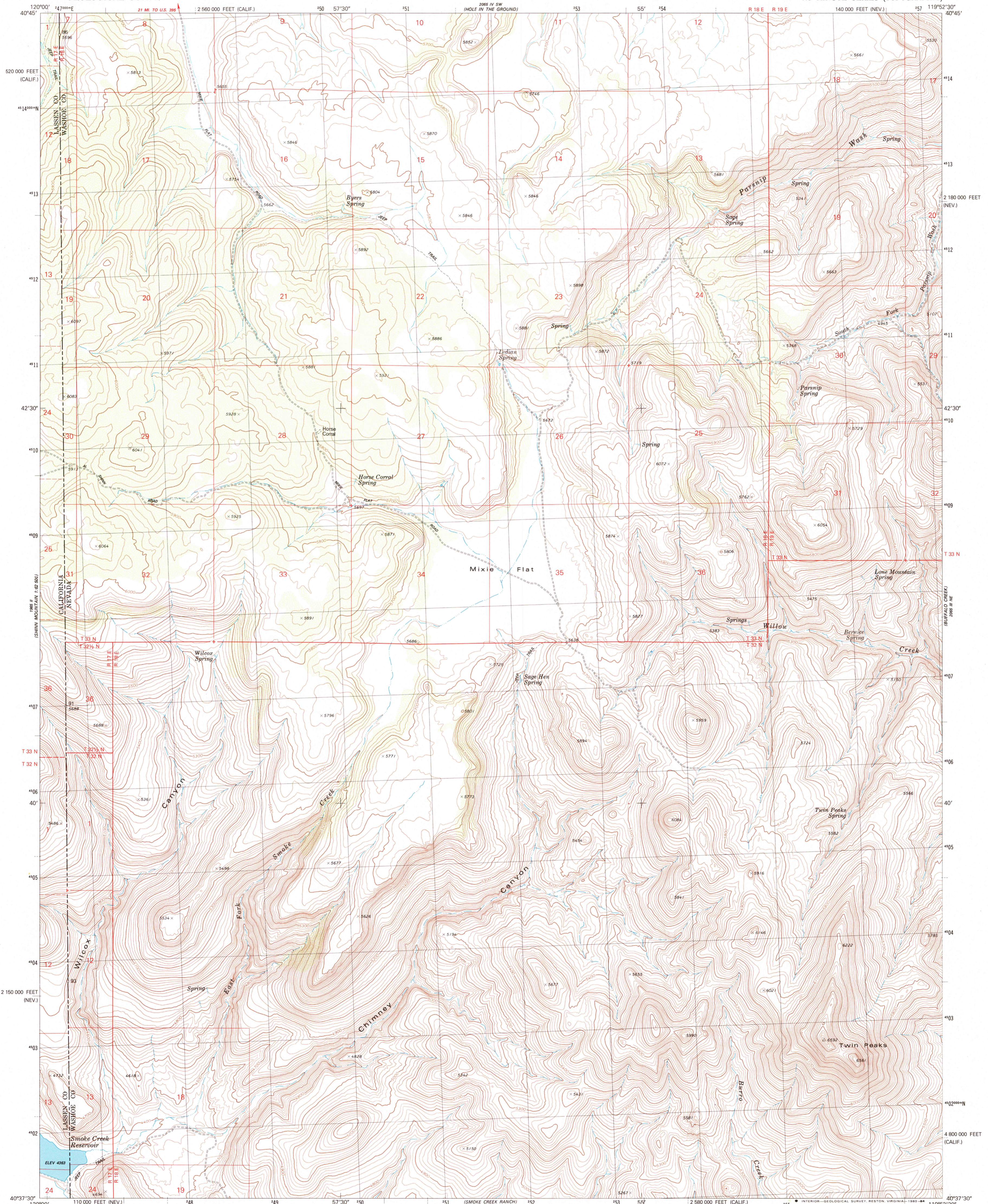
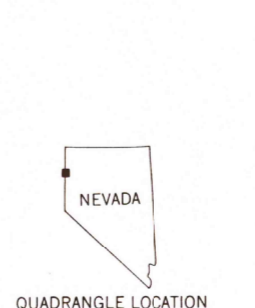
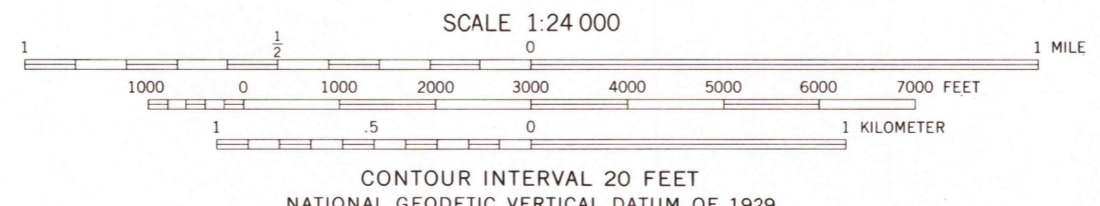
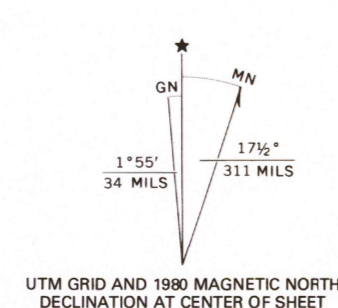


UNITED STATES
DEPARTMENT OF THE INTERIOR
GEOLOGICAL SURVEY

MIXIE FLAT QUADRANGLE
NEVADA-CALIFORNIA
7.5 MINUTE SERIES (TOPOGRAPHIC)



Mapped, edited, and published by the Geological Survey
Control by USGS and NOS/NOAA
Topography by photogrammetric methods from aerial photographs taken 1974. Field checked 1975. Map edited 1980
Projection: Nevada coordinate system, west zone (transverse Mercator)
10,000-foot grid ticks based on Nevada coordinate system, west zone and California coordinate system, zone 1
1000-meter Universal Transverse Mercator grid, zone 11
1927 North American Datum
To place on the predicted North American Datum 1983 move the projection lines 16 meters north and 87 meters east as shown by dashed corner ticks
Where omitted, land lines have not been established



ROAD CLASSIFICATION

Primary highway, hard surface	Light-duty road, hard or improved surface
Secondary highway, hard surface	Unimproved road
Interstate Route	U. S. Route
	State Route

MIXIE FLAT, NEV.-CALIF.
N4037.5-W11952.5/7.5

1980

DMA 2085 III NW-SERIES V896

THIS MAP COMPLIES WITH NATIONAL MAP ACCURACY STANDARDS
FOR SALE BY U. S. GEOLOGICAL SURVEY, DENVER, COLORADO 80225, OR RESTON, VIRGINIA 22092
A FOLDER DESCRIBING TOPOGRAPHIC MAPS AND SYMBOLS IS AVAILABLE ON REQUEST

USGS AND HISTORICAL MAP ARCHIVES