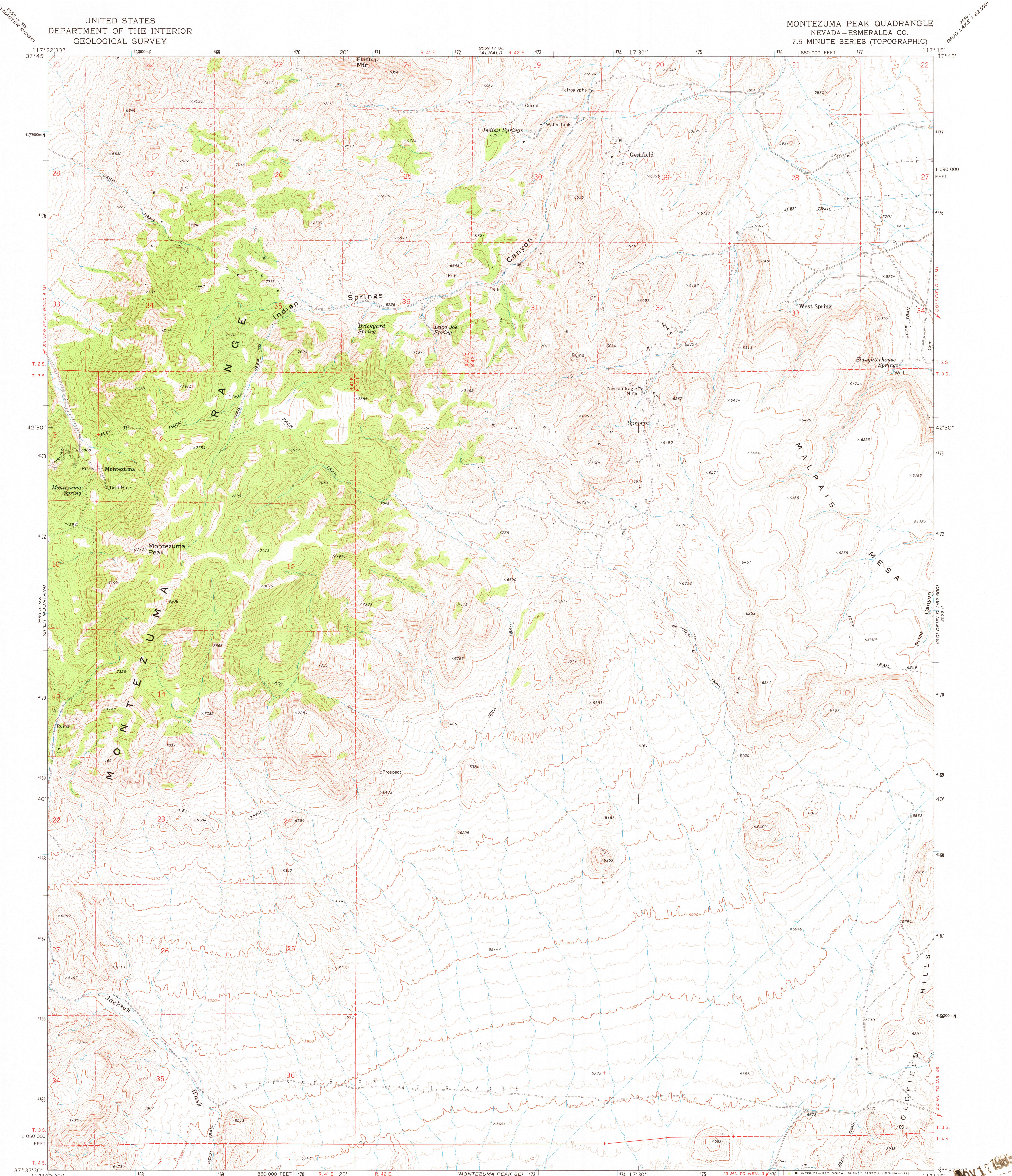
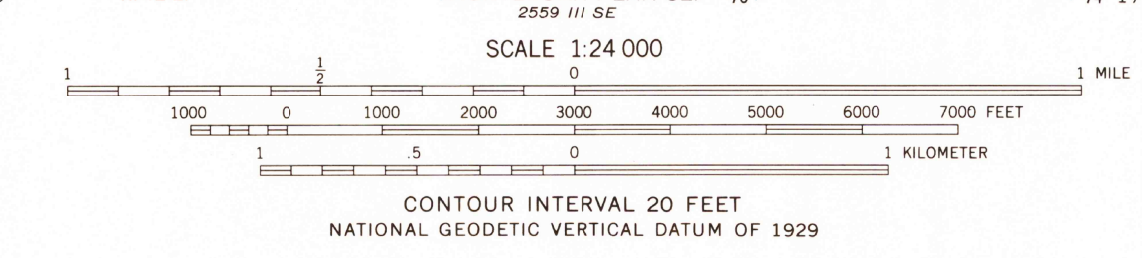
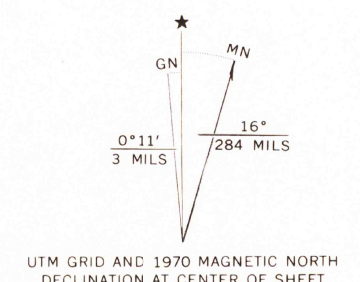


UNITED STATES  
DEPARTMENT OF THE INTERIOR  
GEOLOGICAL SURVEY

MONTEZUMA PEAK QUADRANGLE  
NEVADA-ESMERALDA CO.  
7.5 MINUTE SERIES (TOPOGRAPHIC)



Mapped, edited, and published by the Geological Survey  
Control by USGS and USC&GS  
Topography by photogrammetric methods from aerial  
photographs taken 1968. Field checked 1970  
Polyconic projection. 1927 North American datum  
10,000-foot grid based on Nevada coordinate system, west zone  
1000-meter Universal Transverse Mercator grid ticks,  
zone 11, shown in blue  
To place on the predicted North American Datum 1983  
move the projection lines 10 meters north and  
80 meters east as shown by dashed corner ticks  
Certain land lines are omitted because of insufficient data



- ROAD CLASSIFICATION
- Primary highway, hard surface
- Secondary highway, hard surface
- Unimproved road
- Light-duty road, hard or improved surface
- Interstate Route
- U. S. Route
- State Route

MONTEZUMA PEAK, NEV.  
N3737.5-W11715.7-7.5

THIS MAP COMPLIES WITH NATIONAL MAP ACCURACY STANDARDS  
FOR SALE BY U. S. GEOLOGICAL SURVEY, DENVER, COLORADO 80225, OR RESTON, VIRGINIA 22092  
A FOLDER DESCRIBING TOPOGRAPHIC MAPS AND SYMBOLS IS AVAILABLE ON REQUEST

Map photinspected 1980  
No major culture or drainage changes observed

PHOTOINSPECTED 1980  
DMA 2559 III NE-SERIES V896

NOV 17 1985

RETURN TO:  
USGS AND IT'S RELIABLE MAP SERVICE