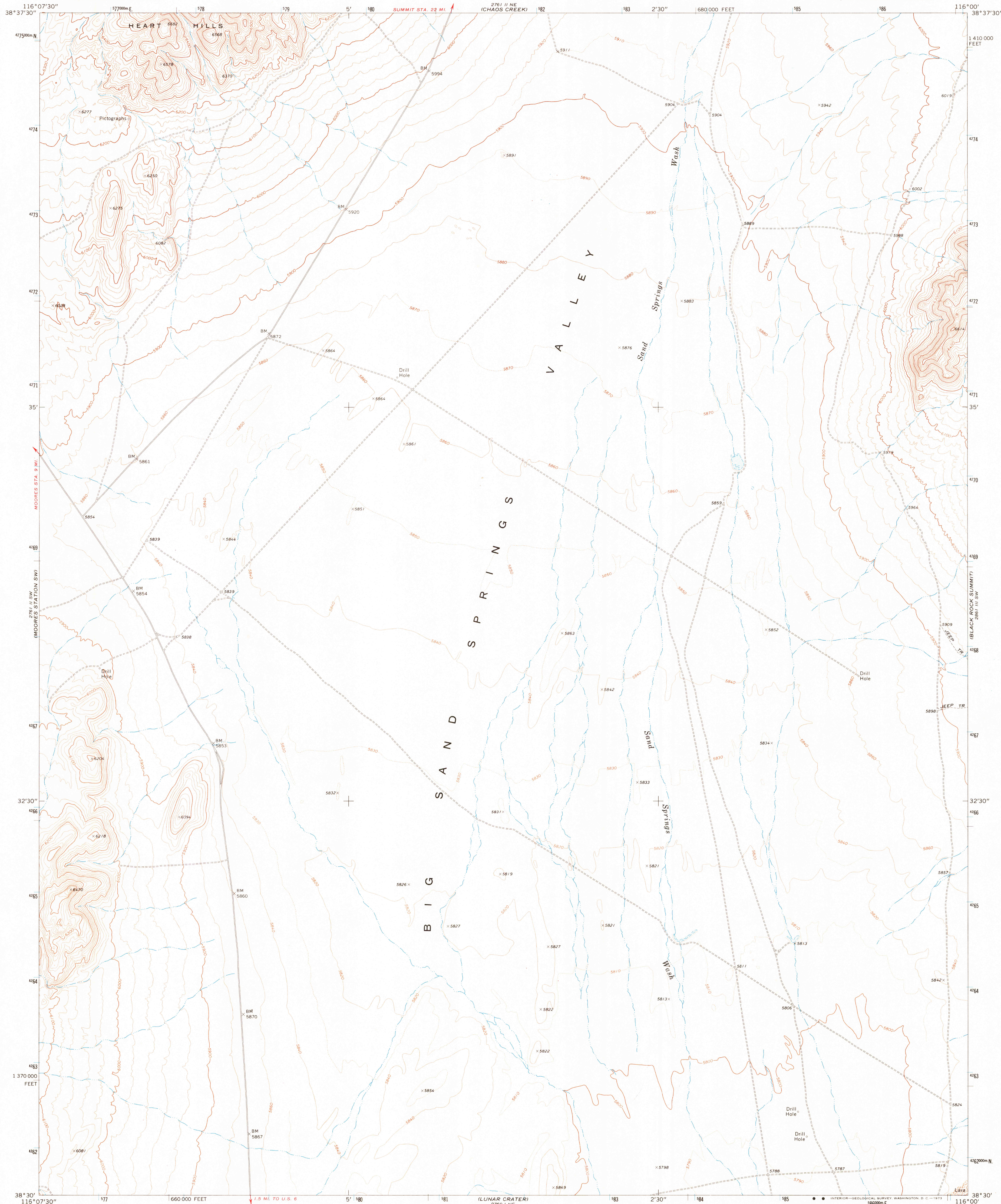
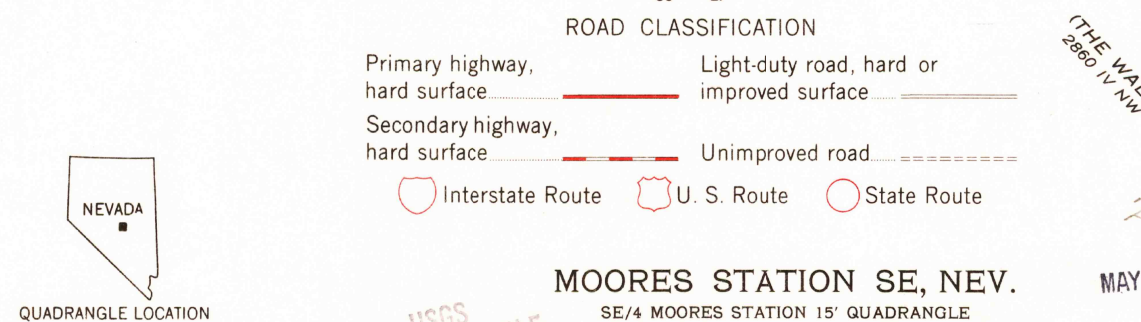
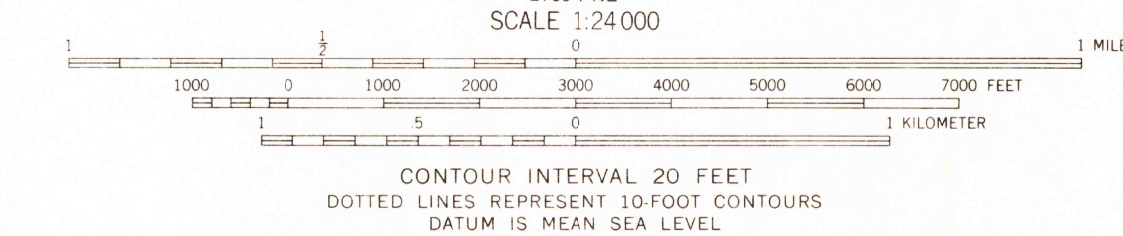
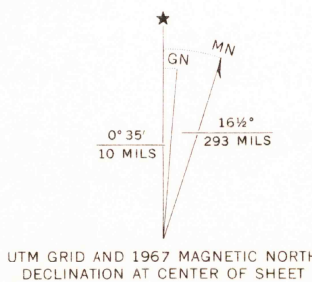


UNITED STATES
DEPARTMENT OF THE INTERIOR
GEOLOGICAL SURVEY

MOORES STATION SE QUADRANGLE
NEVADA—NVE CO.
7.5 MINUTE SERIES (TOPOGRAPHIC)
SE/4 MOORES STATION 15' QUADRANGLE



Mapped by the Atomic Energy Commission and the Geological Survey
Edited and published by the Geological Survey
Control by USGS, USC&GS, and Atomic Energy Commission
Topography by photogrammetric methods from aerial
photographs taken 1967. Field checked 1967
Polyconic projection. 1927 North American datum
10,000-foot grid based on Nevada coordinate system, central zone
1000-meter Universal Transverse Mercator grid ticks,
zone 11, shown in blue
Land lines have not been established in this area



THIS MAP COMPLIES WITH NATIONAL MAP ACCURACY STANDARDS
FOR SALE BY U. S. GEOLOGICAL SURVEY, DENVER, COLORADO 80225, OR WASHINGTON, D. C. 20242
A FOLDER DESCRIBING TOPOGRAPHIC MAPS AND SYMBOLS IS AVAILABLE ON REQUEST