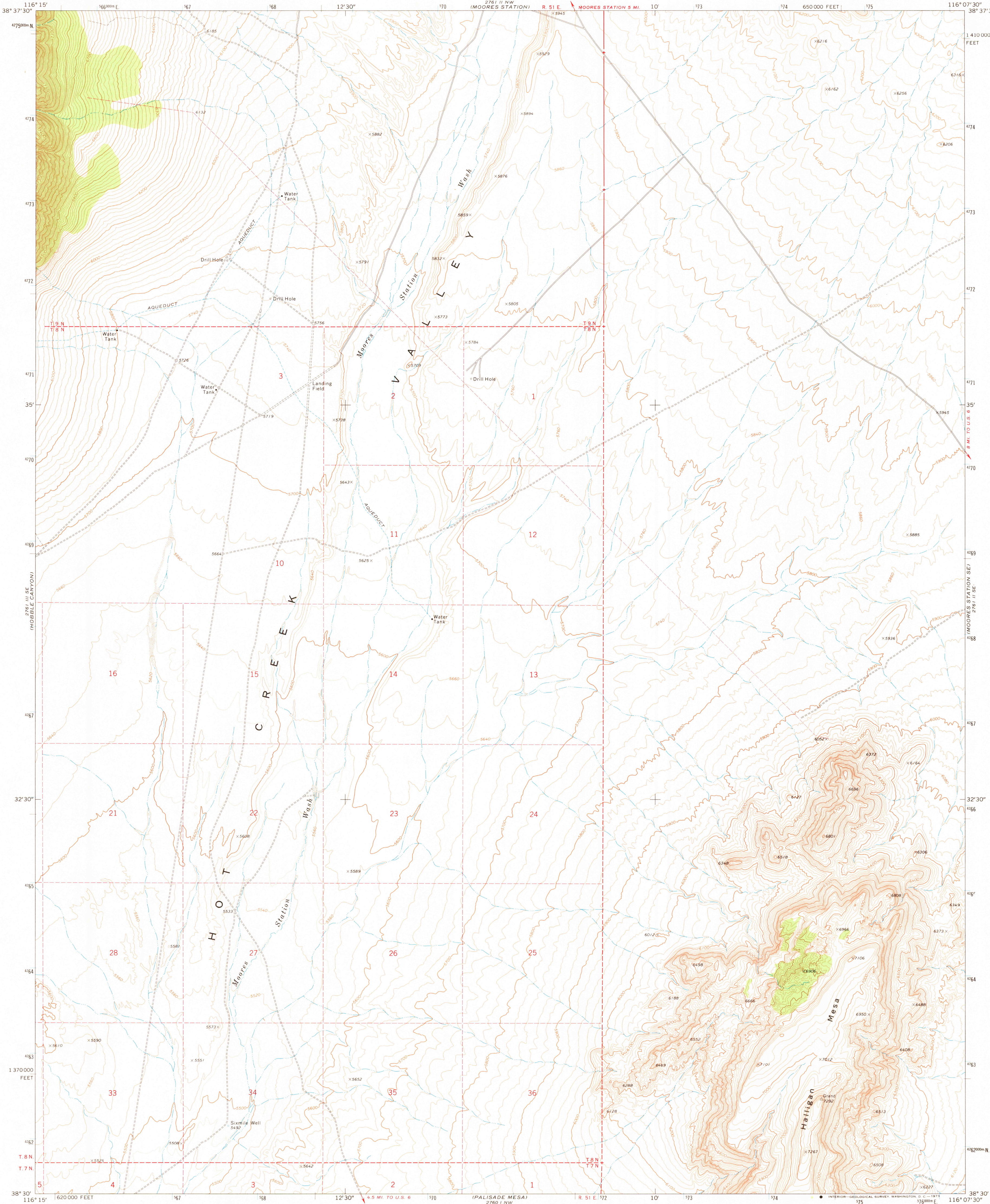
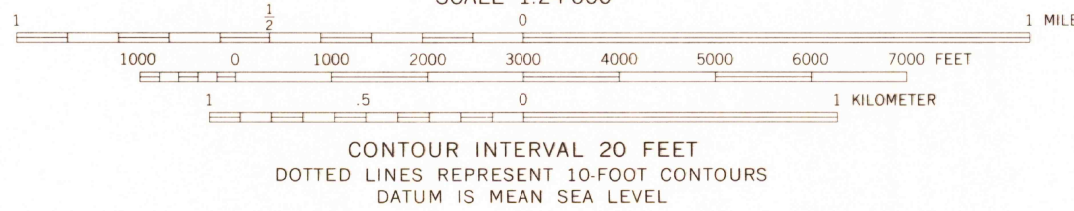
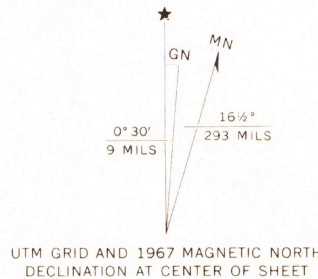


UNITED STATES
DEPARTMENT OF THE INTERIOR
GEOLOGICAL SURVEY

MOORES STATION SW QUADRANGLE
NEVADA-NYE CO.
7.5 MINUTE SERIES (TOPOGRAPHIC)
SW/4 MOORES STATION 15 QUADRANGLE



Mapped by the Atomic Energy Commission and the Geological Survey
Edited and published by the Geological Survey
Control by USGS, USC&GS, and Atomic Energy Commission
Topography by photogrammetric methods from aerial
photographs taken 1967. Field checked 1967
Polyconic projection. 1927 North American datum
10,000-foot grid based on Nevada coordinate system, central zone
1000-meter Transverse Mercator grid ticks,
zone 11, shown in blue
Fine red dashed lines indicate selected fence lines
Where omitted, land lines have not been established



ROAD CLASSIFICATION	
Primary highway, hard surface	Light-duty road, hard or improved surface
Secondary highway, hard surface	Unimproved road
Interstate Route	U. S. Route
	State Route

MOORES STATION SW, NEV.
SW/4 MOORES STATION 15 QUADRANGLE
N3830-W11607.5/7.5

1967

AMS 2761 II SW-SERIES V896

USGS
HISTORICAL FILE
TOPOGRAPHIC DIVISION

MAR 12 1973

2280