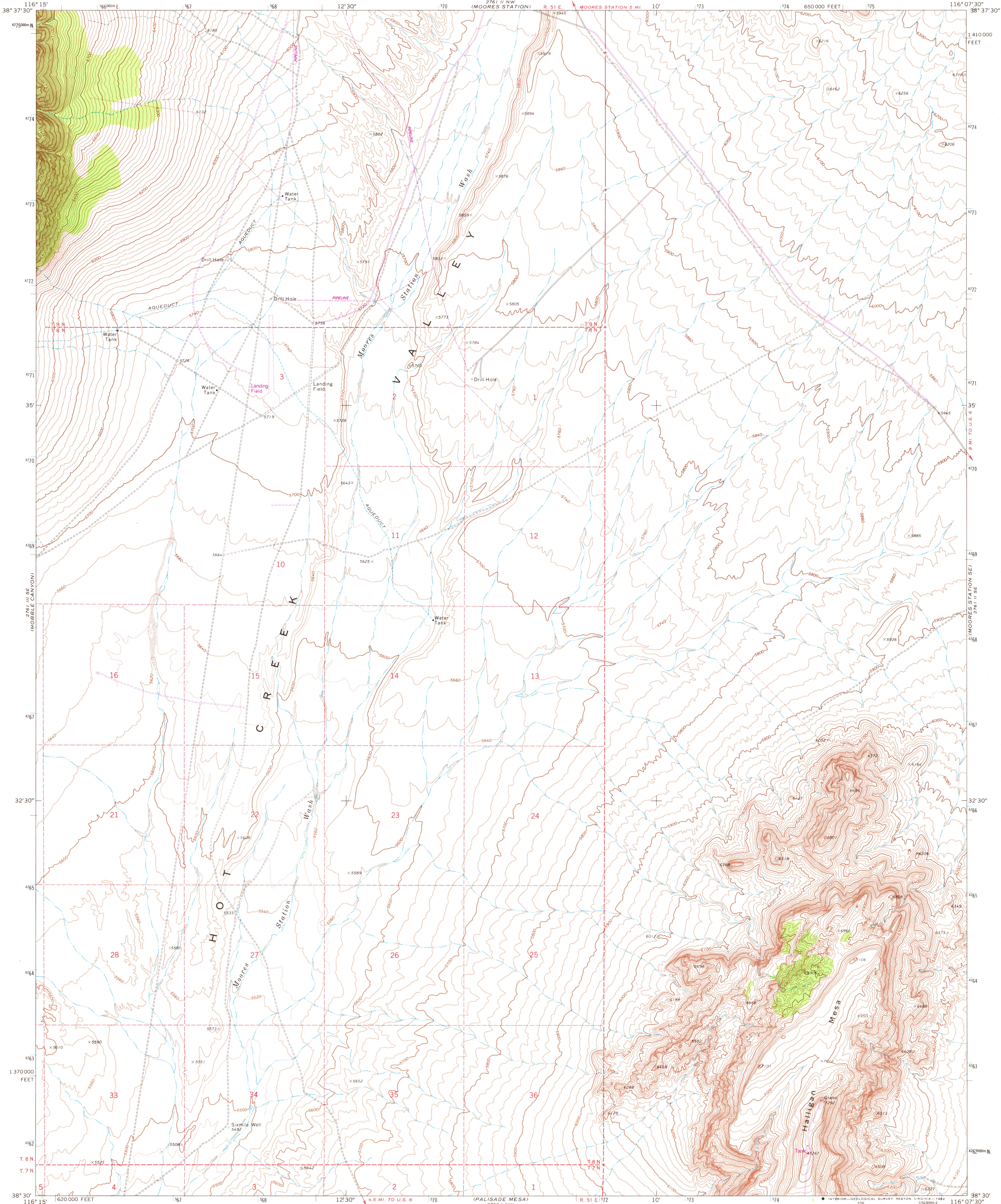
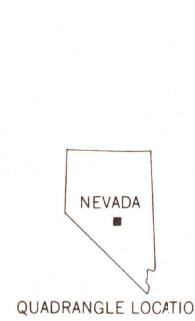
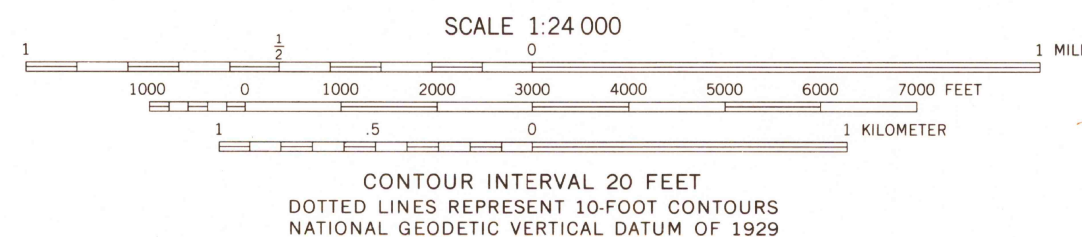
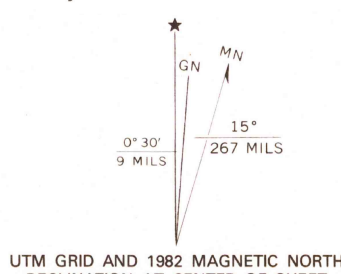


UNITED STATES
DEPARTMENT OF THE INTERIOR
GEOLOGICAL SURVEY

MOORES STATION SW QUADRANGLE
NEVADA—NVE CO.
7.5 MINUTE SERIES (TOPOGRAPHIC)
SW 1/4 MOORES STATION 15' QUADRANGLE



Mapped by the Atomic Energy Commission and the Geological Survey
Edited and published by the Geological Survey
Control by USGS and NOS/NOAA, and Atomic Energy Commission
Topography by photogrammetric methods from aerial
photographs taken 1967. Field checked 1967
Polyconic projection. 1927 North American datum
10,000-foot grid based on Nevada coordinate system, central zone
1000-meter Universal Transverse Mercator grid ticks,
zone 11, shown in blue
To place on the predicted North American Datum 1983,
move the projection lines 10 meters north and
77 meters east as shown by dashed corner ticks
Fine red dashed lines indicate selected fence lines
Where omitted, land lines have not been established



ROAD CLASSIFICATION	
Primary highway, hard surface	Light-duty road, hard or improved surface
Secondary highway, hard surface	Unimproved road
Interstate Route	U. S. Route
	State Route

MOORES STATION SW, NEV.
SW 1/4 MOORES STATION 15' QUADRANGLE
N3830—W11607.5/7.5

1967
PHOTOREVISED 1982
DMA 2761 II SW—SERIES V896

THIS MAP COMPLIES WITH NATIONAL MAP ACCURACY STANDARDS
FOR SALE BY U. S. GEOLOGICAL SURVEY, DENVER, COLORADO 80225, OR RESTON, VIRGINIA 22092
A FOLDER DESCRIBING TOPOGRAPHIC MAPS AND SYMBOLS IS AVAILABLE ON REQUEST

Revisions shown in purple compiled from aerial photographs
taken 1980 and other source data. This information not
field checked. Map edited 1982

JAN 18 1983
RETURN TO:
USGS AND HISTORICAL MAP ARCHIVES
2700